

Background

Recombinant Monoclonal Anti-CD56 Antibody, Rabbit (3B6) is a CD56 primary antibody for IHC application. CD56 is found on T cells and NK cells, and is involved in cell migration, axonal growth, pathfinding and synaptic plasticity. Polysialic modification results in reduction of CD56-mediated cell adhesion. Through its extracellular region, CD56 mediates homophilic and heterophilic interactions by binding extracellular matrix components such as laminin and integrins. CD56 is expressed on most neuroectodermal derived cell lines, tissues and neoplasms such as retinoblastoma, medulloblastoma, astrocytomas and neuroblastoma.

Key parameter

Host Species	Rabbit
Isotype	IgG
Clone	3B6
Application	IHC
Property	1: 500
State	Liquid
Positive Control	Human Tonsil Tissues
Clonality	Monoclonal
Research Field	Cancer Drug Targets
Source	Rabbit
Synonym	CD56, NCAM

Experiment Protocol

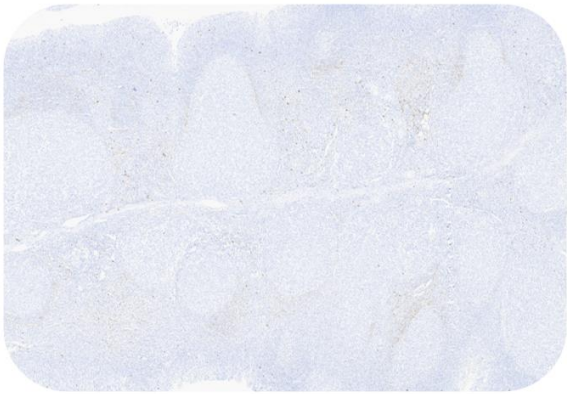
LEICA Experiment Protocol(Manual)

Storage

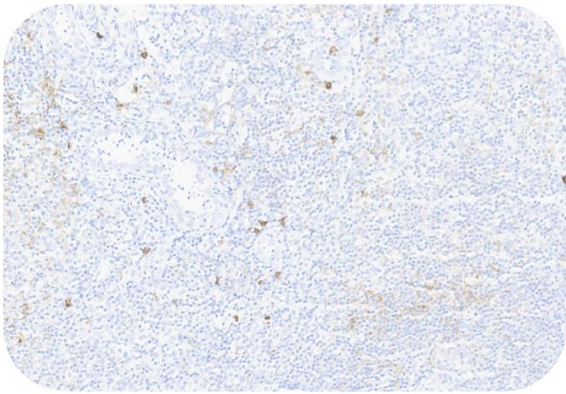
Shipped at 4°C. Store at +4°C short term (1-2 weeks). Upon delivery aliquot. Store at -20°C long term. Avoid freeze / thaw cycle. The shelf life is 30 days from the date of opening.

Typical Data

Control Sample



Immunohistochemistry (Formalin/PFA-fixed paraffin-embedded sections) -Recombinant Monoclonal Anti-CD56 Antibody, Rabbit (3B6) (HGS-S251)
Human Tonsil Tissue, 4X



Immunohistochemistry (Formalin/PFA-fixed paraffin-embedded sections) -Recombinant Monoclonal Anti-CD56 Antibody, Rabbit (3B6) (HGS-S251)
Human Tonsil Tissue, 20X

Discounts, Gifts,
and more!



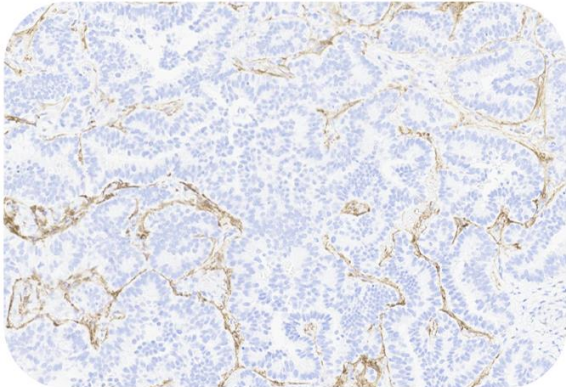
Recombinant Monoclonal Anti-CD56 Antibody, Rabbit (3B6)

Catalog # HGS-S251

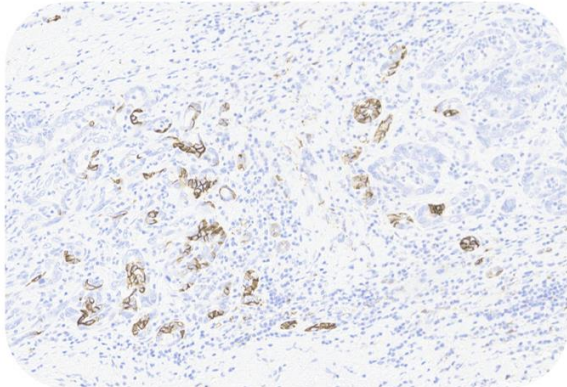


Immunohistochemical analysis of paraffin embedded Human tonsil tissue labelled with HGS-S251 at 1/500 dilution.
Perform heat mediated antigen retrieval with Tris/EDTA buffer pH 9.0 before commencing with IHC staining protocol.

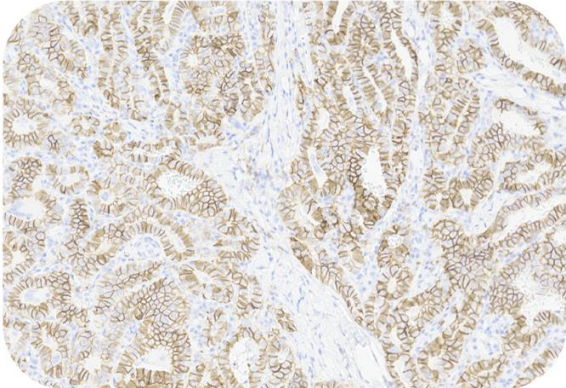
Cancer Sample



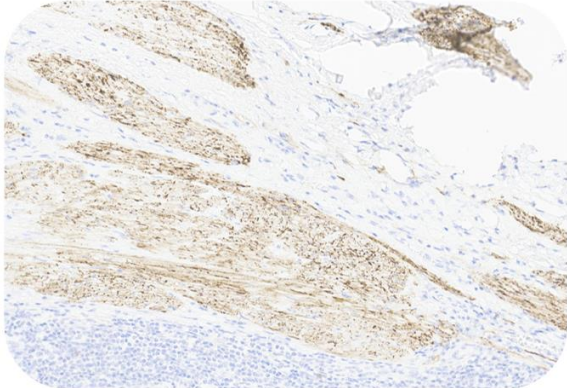
Immunohistochemistry (Formalin/PFA-fixed paraffin-embedded sections) -Recombinant Monoclonal Anti-CD56 Antibody, Rabbit (3B6) (HGS-S251)
Human Lung Cancer, 20X



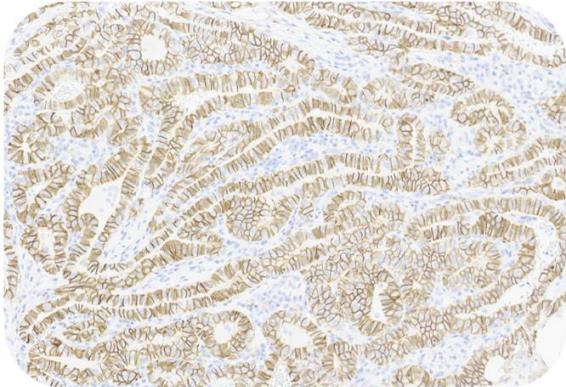
Immunohistochemistry (Formalin/PFA-fixed paraffin-embedded sections) -Recombinant Monoclonal Anti-CD56 Antibody, Rabbit (3B6) (HGS-S251)
Human Liver Cancer, 20X



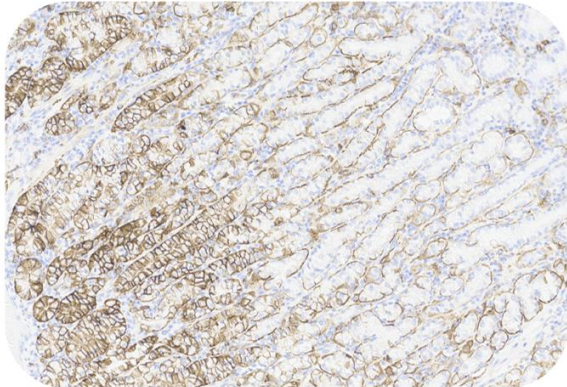
Immunohistochemistry (Formalin/PFA-fixed paraffin-embedded sections) -Recombinant Monoclonal Anti-CD56 Antibody, Rabbit (3B6) (HGS-S251)
Human Thyroid Cancer, 20X



Immunohistochemistry (Formalin/PFA-fixed paraffin-embedded sections) -Recombinant Monoclonal Anti-CD56 Antibody, Rabbit (3B6) (HGS-S251)
Human Urothelial Cancer, 20X



Immunohistochemistry (Formalin/PFA-fixed paraffin-embedded sections) -Recombinant Monoclonal Anti-CD56 Antibody, Rabbit (3B6) (HGS-S251)
Human Thyroid Cancer, 20X



Immunohistochemistry (Formalin/PFA-fixed paraffin-embedded sections) -Recombinant Monoclonal Anti-CD56 Antibody, Rabbit (3B6) (HGS-S251)
Human Gastric Cancer, 20X

Immunohistochemical analysis of paraffin embedded human cancer tissue labelled with HGS-S251 at 1/500 dilution.
Perform heat mediated antigen retrieval with Tris/EDTA buffer pH 9.0 before commencing with IHC staining protocol.

