

Background

Recombinant Monoclonal Anti-HER2 Antibody, Rabbit (5D5) is a HER2 primary antibody for IHC application. Protein tyrosine kinase that is part of several cell surface receptor complexes, but that apparently needs a coreceptor for ligand binding. Essential component of a neuregulin-receptor complex, although neuregulins do not interact with it alone.

Key parameter

Host Species	Rabbit
Isotype	IgG
Clone	5D5
Application	IHC
Property	1: 1000
State	Liquid
Positive Control	Human breast cancer
Clonality	Monoclonal
Research Field	Cancer Drug Targets
Source	Rabbit
Synonym	ERBB2

Experiment Protocol

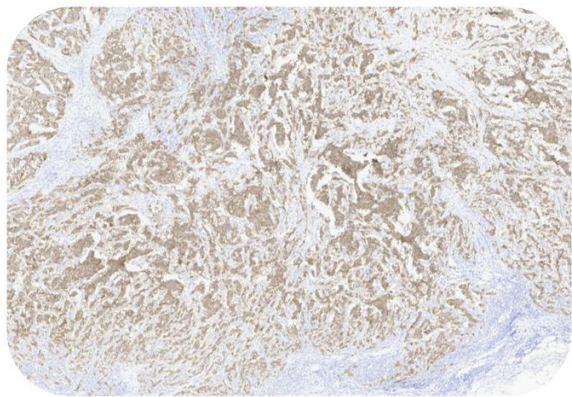
LEICA Experiment Protocol(Manual)

Storage

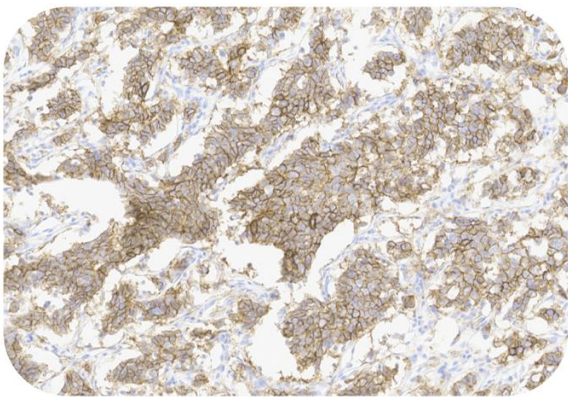
Shipped at 4°C. Store at +4°C short term (1-2 weeks). Upon delivery aliquot. Store at -20°C long term. Avoid freeze / thaw cycle. The shelf life is 30 days from the date of opening.

Typical Data

Control Sample



Immunohistochemistry (Formalin/PFA-fixed paraffin-embedded sections) -Recombinant Monoclonal Anti-HER2 Antibody, Rabbit (5D5) (HGS-S254)  
Human Breast Cancer, 4X



Immunohistochemistry (Formalin/PFA-fixed paraffin-embedded sections) -Recombinant Monoclonal Anti-HER2 Antibody, Rabbit (5D5) (HGS-S254)  
Human Breast Cancer, 20X

Immunohistochemical analysis of paraffin embedded human tumor tissue labelled with HGS-S254 at 1/1000 dilution.

Perform heat mediated antigen retrieval with Tris/EDTA buffer pH 9.0 before commencing with IHC staining protocol.

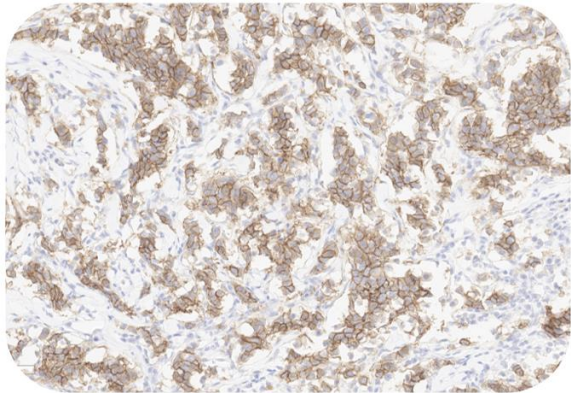
Cancer Sample

Discounts, Gifts,  
and more!

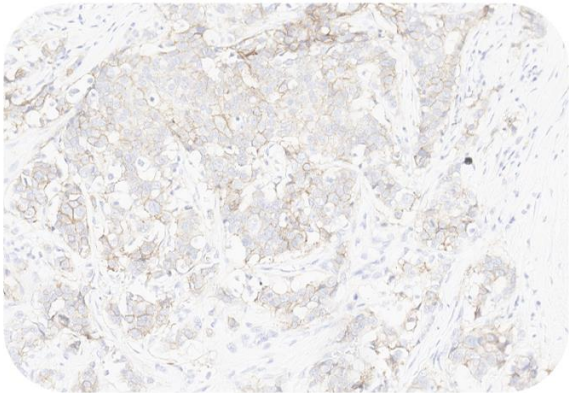


Recombinant Monoclonal Anti-HER2 Antibody, Rabbit (5D5)

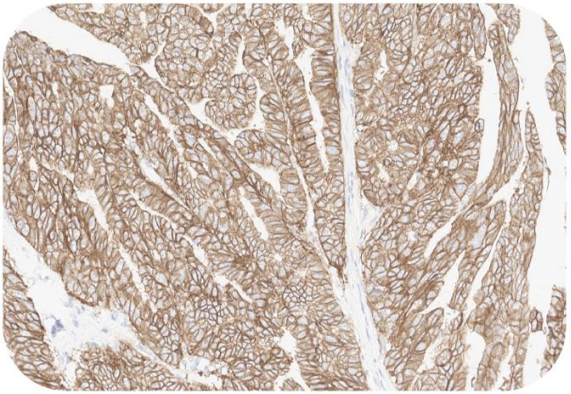
Catalog # HGS-S254



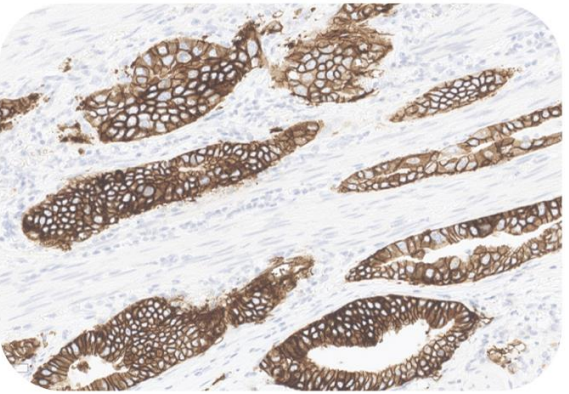
Immunohistochemistry (Formalin/PFA-fixed paraffin-embedded sections) -Recombinant Monoclonal Anti-HER2 Antibody, Rabbit (5D5) (HGS-S254)  
Human Breast Cancer, 20X



Immunohistochemistry (Formalin/PFA-fixed paraffin-embedded sections) -Recombinant Monoclonal Anti-HER2 Antibody, Rabbit (5D5) (HGS-S254)  
Human Breast Cancer, 20X



Immunohistochemistry (Formalin/PFA-fixed paraffin-embedded sections) -Recombinant Monoclonal Anti-HER2 Antibody, Rabbit (5D5) (HGS-S254)  
Human Gastric cancer, 20X



Immunohistochemistry (Formalin/PFA-fixed paraffin-embedded sections) -Recombinant Monoclonal Anti-HER2 Antibody, Rabbit (5D5) (HGS-S254)  
Human Gastric cancer, 20X

**Immunohistochemical analysis of paraffin embedded human cancer tissue labelled with HGS-S254 at 1/1000 dilution.**  
Perform heat mediated antigen retrieval with Tris/EDTA buffer pH 9.0 before commencing with IHC staining protocol.

