

Background

Recombinant Monoclonal Anti-CD4 Antibody, Rabbit (4F3) is a CD4 primary antibody for IHC application. The CD4 antigen is involved in the recognition of MHC class II molecules and is a co-receptor for HIV. CD4 is primarily expressed in a subset of T-lymphocytes, also referred to as T helper cells, but may also be expressed by other cells in the immune system, such as monocytes, macrophages, and dendritic cells.

Key parameter

Host Species	Rabbit
Isotype	IgG
Clone	4F3
Application	IHC
Property	1: 1000
State	Liquid
Positive Control	Human tonsil tissue
Clonality	Monoclonal
Research Field	Cancer Drug Targets
Source	Rabbit
Synonym	CD4

Experiment Protocol

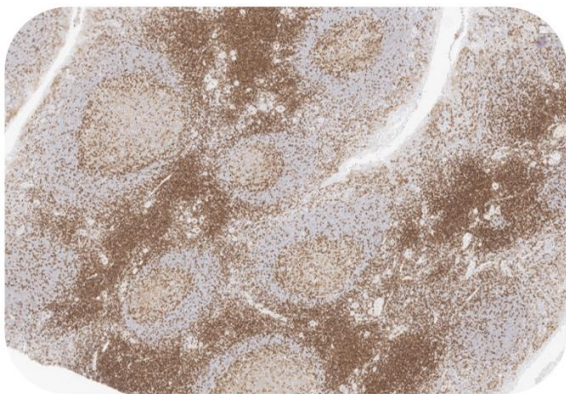
LEICA Experiment Protocol(Manual)

Storage

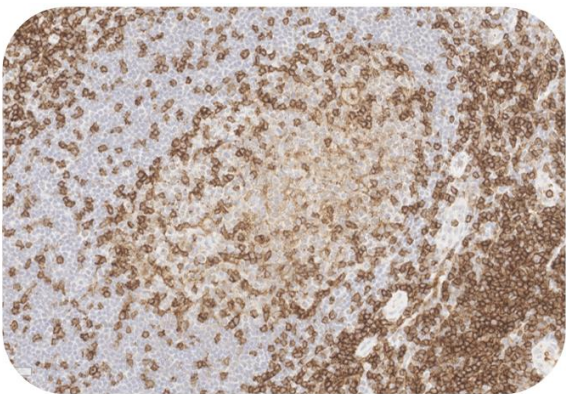
Shipped at 4°C. Store at +4°C short term (1-2 weeks). Upon delivery aliquot. Store at -20°C long term. Avoid freeze / thaw cycle. The shelf life is 30 days from the date of opening.

Typical Data

Control Sample



Immunohistochemistry (Formalin/PFA-fixed paraffin-embedded sections) -Recombinant Monoclonal Anti-CD4 Antibody, Rabbit (4F3) (HGS-S255)  
Human Tonsil Tissue, 4X



Immunohistochemistry (Formalin/PFA-fixed paraffin-embedded sections) -Recombinant Monoclonal Anti-CD4 Antibody, Rabbit (4F3) (HGS-S255)  
Human Tonsil Tissue, 20X

Immunohistochemical analysis of paraffin embedded Human tonsil tissue labelled with HGS-S255 at 1/1000 dilution. Perform heat mediated antigen retrieval with Tris/EDTA buffer pH 9.0 before commencing with IHC staining protocol.

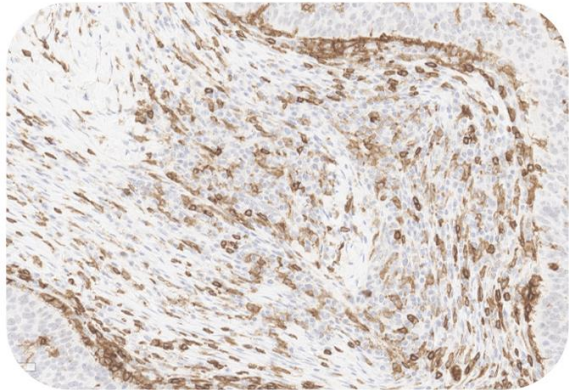
Cancer Sample





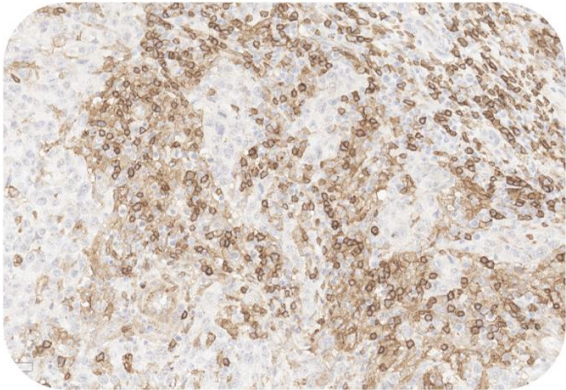
Recombinant Monoclonal Anti-CD4 Antibody, Rabbit (4F3)

Catalog # HGS-S255



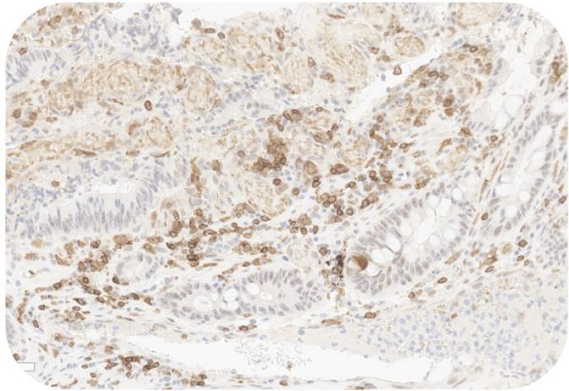
Immunohistochemistry (Formalin/PFA-fixed paraffin-embedded sections) -Recombinant Monoclonal Anti-CD4 Antibody, Rabbit (4F3) (HGS-S255)

Human Lung Cancer, 20X



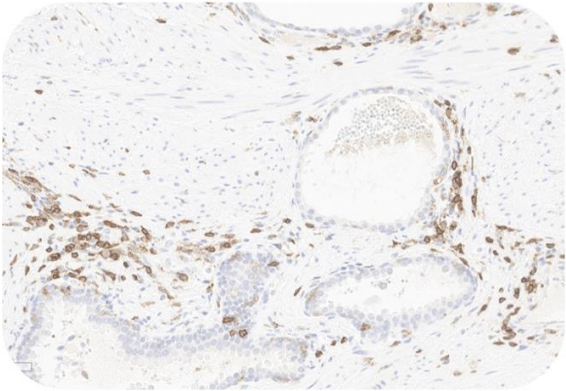
Immunohistochemistry (Formalin/PFA-fixed paraffin-embedded sections) -Recombinant Monoclonal Anti-CD4 Antibody, Rabbit (4F3) (HGS-S255)

Human Liver Cancer, 20X



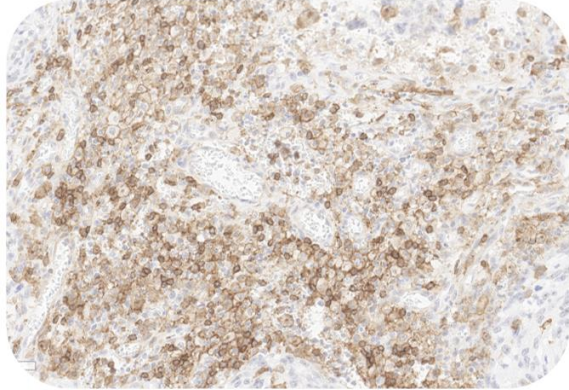
Immunohistochemistry (Formalin/PFA-fixed paraffin-embedded sections) -Recombinant Monoclonal Anti-CD4 Antibody, Rabbit (4F3) (HGS-S255)

Human Colorectal Cancer, 20X



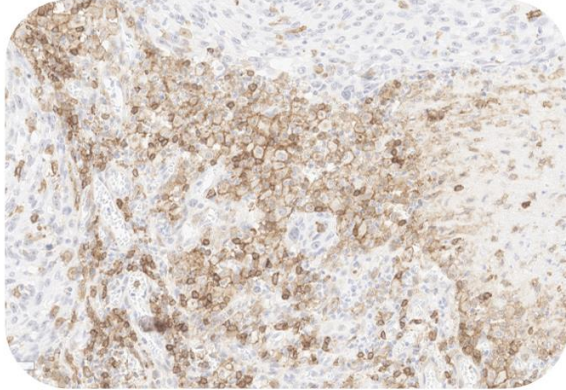
Immunohistochemistry (Formalin/PFA-fixed paraffin-embedded sections) -Recombinant Monoclonal Anti-CD4 Antibody, Rabbit (4F3) (HGS-S255)

Human Prostate Cancer, 20X



Immunohistochemistry (Formalin/PFA-fixed paraffin-embedded sections) -Recombinant Monoclonal Anti-CD4 Antibody, Rabbit (4F3) (HGS-S255)

Human Esophageal carcinoma, 20X



Immunohistochemistry (Formalin/PFA-fixed paraffin-embedded sections) -Recombinant Monoclonal Anti-CD4 Antibody, Rabbit (4F3) (HGS-S255)

Human Esophageal carcinoma, 20X

Immunohistochemical analysis of paraffin embedded human cancer tissue labelled with HGS-S255 at 1/1000 dilution.

Perform heat mediated antigen retrieval with Tris/EDTA buffer pH 9.0 before commencing with IHC staining protocol.

