

Background

Recombinant Monoclonal Anti-CD7 Antibody, Rabbit (6E3) is a CD7 primary antibody for IHC application. This protein is found on thymocytes and mature T cells. It plays an essential role in T-cell interactions and also in T-cell/B-cell interaction during early lymphoid development.

Key parameter

Host Species	Rabbit
Isotype	IgG
Clone	6E3
Application	IHC
Property	1: 1000
State	Liquid
Positive Control	Human Tonsil Tissues
Clonality	Monoclonal
Research Field	Cancer Drug Targets
Source	Rabbit
Synonym	GP40, LEU-9, Tp40, TP41

Experiment Protocol

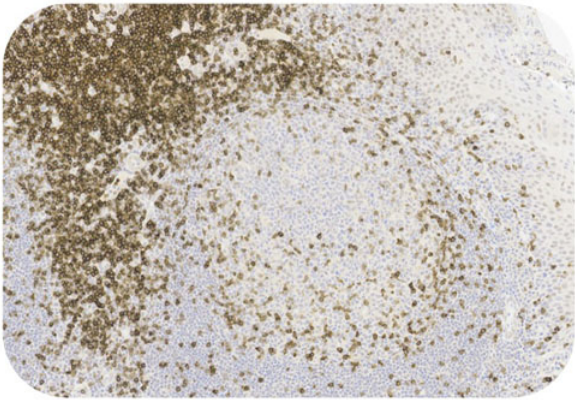
LEICA Experiment Protocol(Manual)

Storage

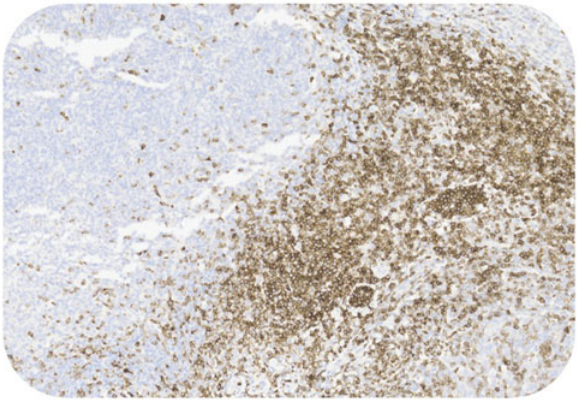
Shipped at 4°C. Store at +4°C short term (1-2 weeks). Upon delivery aliquot. Store at -20°C long term. Avoid freeze / thaw cycle. The shelf life is 30 days from the date of opening.

Typical Data

Control Sample



Immunohistochemistry (Formalin/PFA-fixed paraffin-embedded sections) -Recombinant Monoclonal Anti-CD7 Antibody, Rabbit (6E3)(HGS-S257)
Human Tonsil Tissue, 20X



Immunohistochemistry (Formalin/PFA-fixed paraffin-embedded sections) -Recombinant Monoclonal Anti-CD7 Antibody, Rabbit (6E3)(HGS-S257)
Human Tonsil Tissue, 20X

Immunohistochemical analysis of paraffin embedded Human tonsil tissue labelled with HGS-S257 at 1/1000 dilution.

Perform heat mediated antigen retrieval with Tris/EDTA buffer pH 9.0 before commencing with IHC staining protocol.

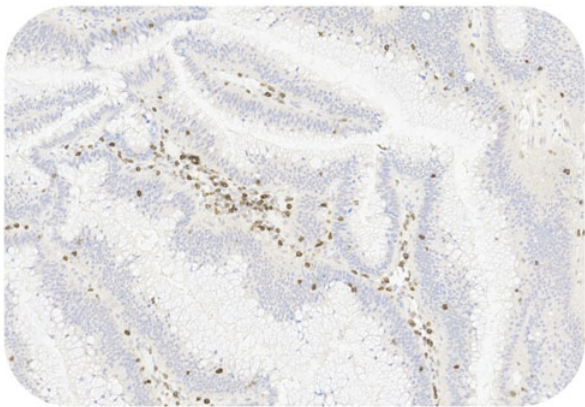
Cancer Sample

Discounts, Gifts,
and more!

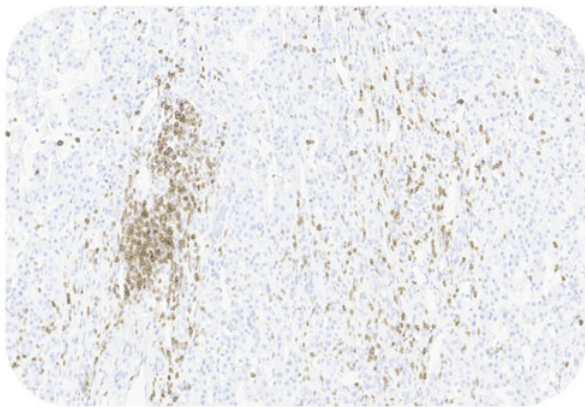


Recombinant Monoclonal Anti-CD7 Antibody, Rabbit (6E3)

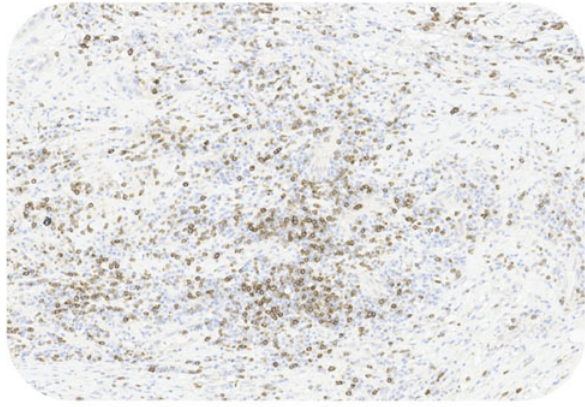
Catalog # HGS-S257



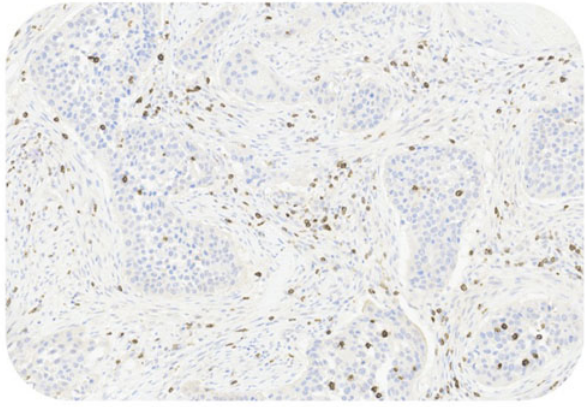
Immunohistochemistry (Formalin/PFA-fixed paraffin-embedded sections) -Recombinant Monoclonal Anti-CD7 Antibody, Rabbit (6E3)(HGS-S257)
Human Colorectal Cancer Tissue, 20X



Immunohistochemistry (Formalin/PFA-fixed paraffin-embedded sections) -Recombinant Monoclonal Anti-CD7 Antibody, Rabbit (6E3)(HGS-S257)
Human Pancreatic Cancer Tissue, 20X



Immunohistochemistry (Formalin/PFA-fixed paraffin-embedded sections) -Recombinant Monoclonal Anti-CD7 Antibody, Rabbit (6E3)(HGS-S257)
Human Lung Tissue, 20X



Immunohistochemistry (Formalin/PFA-fixed paraffin-embedded sections) -Recombinant Monoclonal Anti-CD7 Antibody, Rabbit (6E3)(HGS-S257)
Human Lung Cancer Tissue, 20X

Immunohistochemical analysis of paraffin embedded human cancer tissue labelled with HGS-S257 at 1/1000 dilution.
Perform heat mediated antigen retrieval with Tris/EDTA buffer pH 9.0 before commencing with IHC staining protocol.

