

Background

Recombinant Monoclonal Anti-CD20 Antibody, Rabbit (6G10) is a CD20 primary antibody for IHC application. CD20 is expressed on the surface of B cells at all stages of development and differentiation except plasma cells (B cells secreting immunoglobulin). It directly acts on B cells by regulating transmembrane calcium ion flow and plays an important regulatory role in the proliferation and differentiation of B cells.

Key parameter

Host Species	Rabbit
Isotype	IgG
Clone	6G10
Application	IHC
Property	1: 1000
State	Liquid
Positive Control	Human Tonsil Tissues
Clonality	Monoclonal
Research Field	Cancer Drug Targets
Source	Rabbit
Synonym	CD20

Experiment Protocol

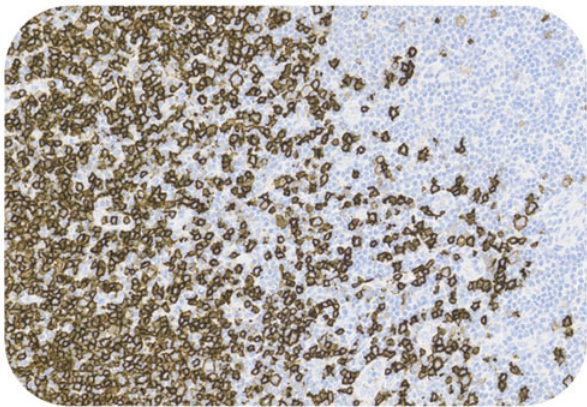
LEICA Experiment Protocol(Manual)

Storage

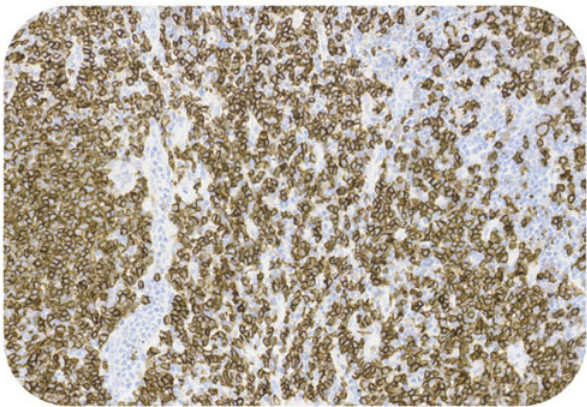
Shipped at 4°C. Store at +4°C short term (1-2 weeks). Upon delivery aliquot. Store at -20°C long term. Avoid freeze / thaw cycle. The shelf life is 30 days from the date of opening.

Typical Data

Control Sample



Immunohistochemistry (Formalin/PFA-fixed paraffin-embedded sections) - Recombinant Monoclonal Anti-CD20 Antibody, Rabbit (6G10)(HGS-S260)
Human Tonsil Tissue, 20X



Immunohistochemistry (Formalin/PFA-fixed paraffin-embedded sections) - Recombinant Monoclonal Anti-CD20 Antibody, Rabbit (6G10)(HGS-S260)
Human Tonsil Tissue, 20X

Immunohistochemical analysis of paraffin embedded Human tonsil tissue labelled with HGS-S260 at 1/1000 dilution.

Perform heat mediated antigen retrieval with Tris/EDTA buffer pH 9.0 before commencing with IHC staining protocol.

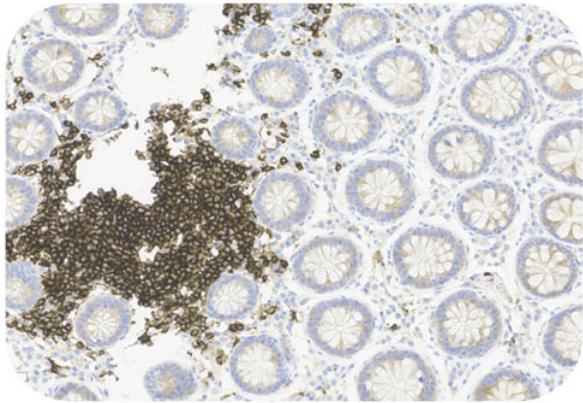
Cancer Sample

Discounts, Gifts,
and more!

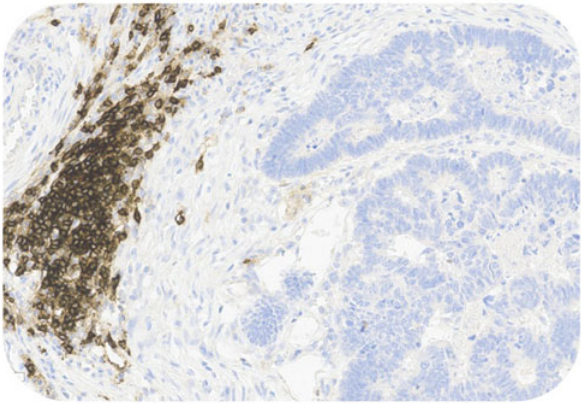


Recombinant Monoclonal Anti-CD20 Antibody, Rabbit (6G10)

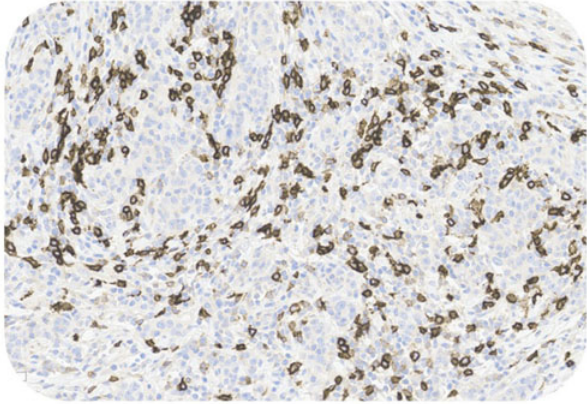
Catalog # HGS-S260



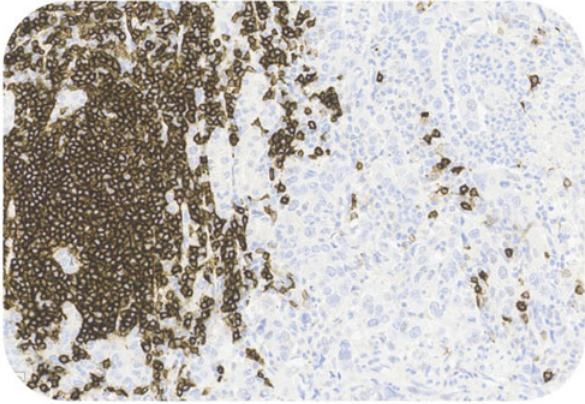
Immunohistochemistry (Formalin/PFA-fixed paraffin-embedded sections) - Recombinant Monoclonal Anti-CD20 Antibody, Rabbit (6G10)(HGS-S260)
Human Colorectal Cancer Tissue, 20X



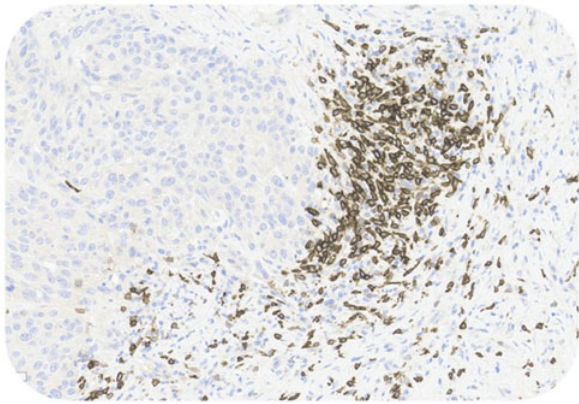
Immunohistochemistry (Formalin/PFA-fixed paraffin-embedded sections) - Recombinant Monoclonal Anti-CD20 Antibody, Rabbit (6G10)(HGS-S260)
Human Colorectal Cancer Tissue, 20X



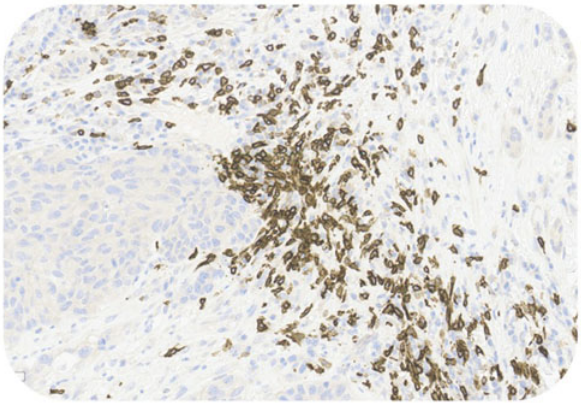
Immunohistochemistry (Formalin/PFA-fixed paraffin-embedded sections) - Recombinant Monoclonal Anti-CD20 Antibody, Rabbit (6G10)(HGS-S260)
Human Gastric Cancer Tissue, 20X



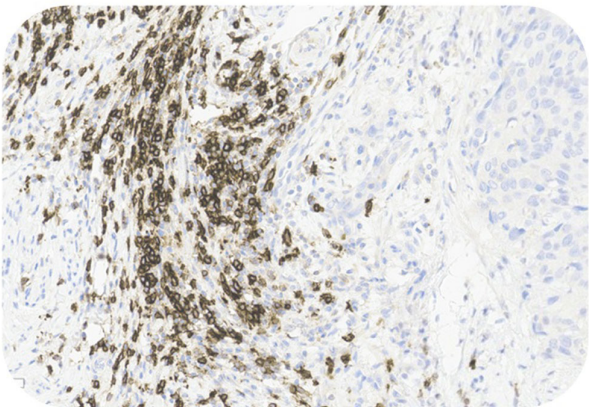
Immunohistochemistry (Formalin/PFA-fixed paraffin-embedded sections) - Recombinant Monoclonal Anti-CD20 Antibody, Rabbit (6G10)(HGS-S260)
Human Gastric Tissue, 20X



Immunohistochemistry (Formalin/PFA-fixed paraffin-embedded sections) - Recombinant Monoclonal Anti-CD20 Antibody, Rabbit (6G10)(HGS-S260)
Human Hepatocellular Carcinoma Tissue, 20X



Immunohistochemistry (Formalin/PFA-fixed paraffin-embedded sections) - Recombinant Monoclonal Anti-CD20 Antibody, Rabbit (6G10)(HGS-S260)
Human Hepatocellular Carcinoma Tissue, 20X



Immunohistochemistry (Formalin/PFA-fixed paraffin-embedded sections) - Recombinant Monoclonal Anti-CD20 Antibody, Rabbit (6G10)(HGS-S260)
Human Cervical Cancer Tissue, 20X

Immunohistochemical analysis of paraffin embedded human cancer tissue labelled with HGS-S260 at 1/1000 dilution.
Perform heat mediated antigen retrieval with Tris/EDTA buffer pH 9.0 before commencing with IHC staining protocol.

