

Background

Recombinant Monoclonal Anti-CD45(LCA) Antibody, Rabbit (1C3) is a CD45(LCA) primary antibody for IHC application. Protein tyrosine-protein phosphatase required for T-cell activation through the antigen receptor. Acts as a positive regulator of T-cell coactivation upon binding to DPP4. The first PTPase domain has enzymatic activity, while the second one seems to affect the substrate specificity of the first one. Upon T-cell activation, recruits and dephosphorylates SKAP1 and FYN. Dephosphorylates LYN, and thereby modulates LYN activity (By similarity).

Key parameter

Host Species	Rabbit
Isotype	IgG
Clone	1C3
Application	IHC
Property	1: 1000
State	Liquid
Positive Control	Human Tonsil Tissues
Clonality	Monoclonal
Research Field	Cancer Drug Targets
Source	Rabbit
Synonym	PTPRC, CD45, GP180, LCA, T200

Experiment Protocol

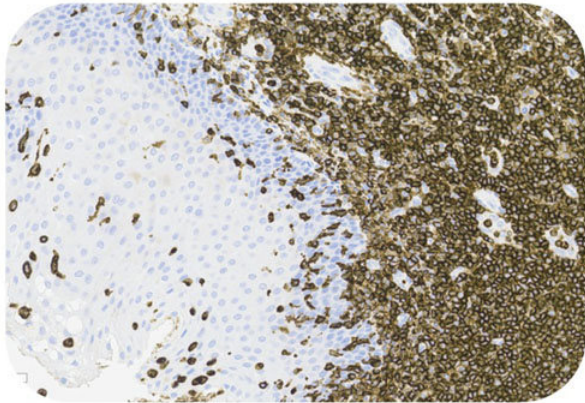
LEICA Experiment Protocol(Manual)

Storage

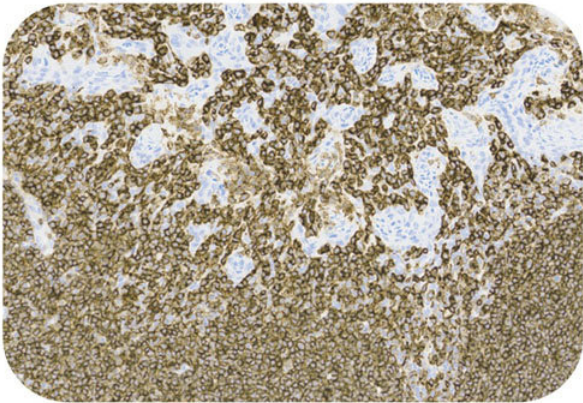
Shipped at 4°C. Store at +4°C short term (1-2 weeks). Upon delivery aliquot. Store at -20°C long term. Avoid freeze / thaw cycle. The shelf life is 30 days from the date of opening.

Typical Data

Control Sample



Immunohistochemistry (Formalin/PFA-fixed paraffin-embedded sections) - Recombinant Monoclonal Anti-CD45(LCA) Antibody, Rabbit (1C3) (HGS-S261)  
Human Tonsil Tissue, 20X



Immunohistochemistry (Formalin/PFA-fixed paraffin-embedded sections) - Recombinant Monoclonal Anti-CD45(LCA) Antibody, Rabbit (1C3) (HGS-S261)  
Human Tonsil Tissue, 20X

Discounts, Gifts,  
and more!





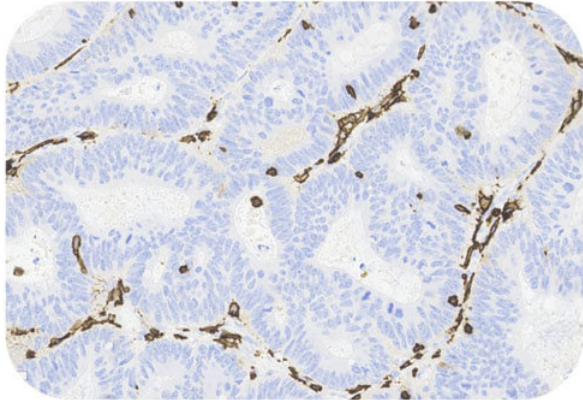
Recombinant Monoclonal Anti-CD45(LCA) Antibody, Rabbit (1C3)

Catalog # HGS-S261

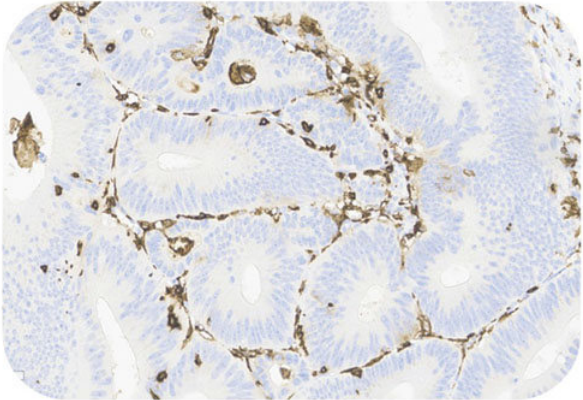


Immunohistochemical analysis of paraffin embedded Human tonsil tissue labelled with HGS-S261 at 1/1000 dilution.  
Perform heat mediated antigen retrieval with Tris/EDTA buffer pH 9.0 before commencing with IHC staining protocol.

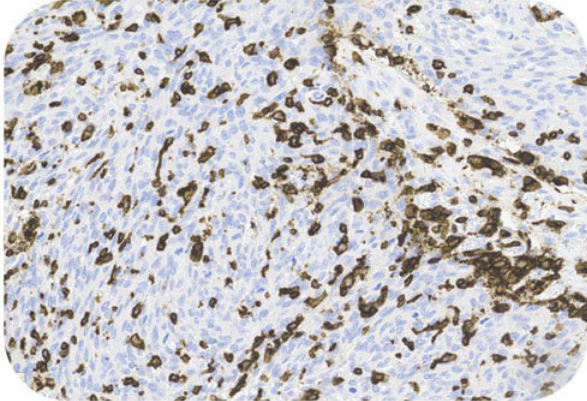
Cancer Sample



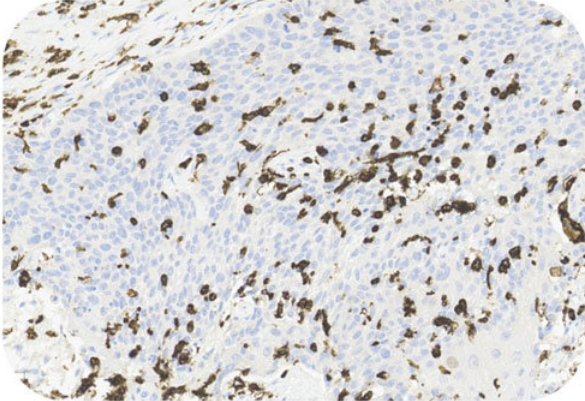
Immunohistochemistry (Formalin/PFA-fixed paraffin-embedded sections) - Recombinant Monoclonal Anti-CD45(LCA) Antibody, Rabbit (1C3) (HGS-S261)  
Human Colorectal Cancer Tissue, 20X



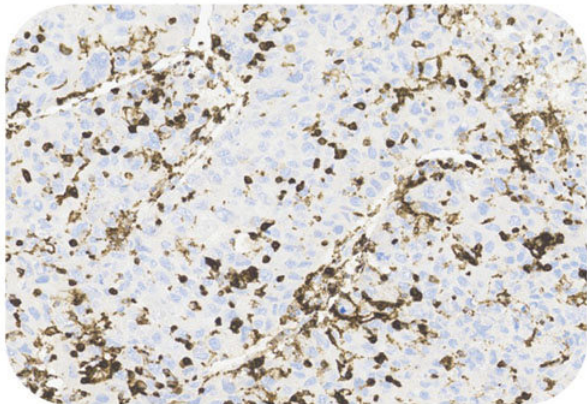
Immunohistochemistry (Formalin/PFA-fixed paraffin-embedded sections) - Recombinant Monoclonal Anti-CD45(LCA) Antibody, Rabbit (1C3) (HGS-S261)  
Human Colorectal Cancer Tissue, 20X



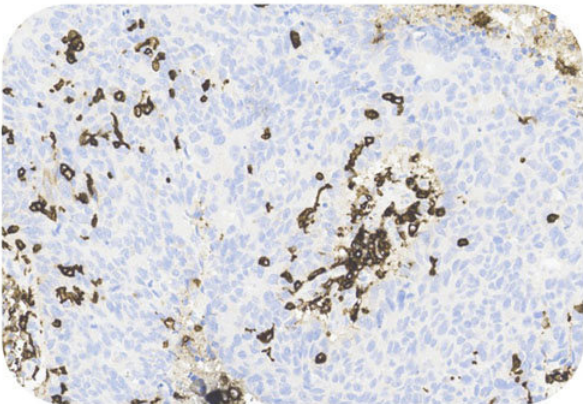
Immunohistochemistry (Formalin/PFA-fixed paraffin-embedded sections) - Recombinant Monoclonal Anti-CD45(LCA) Antibody, Rabbit (1C3) (HGS-S261)  
Human Esophagus Cancer Tissue, 20X



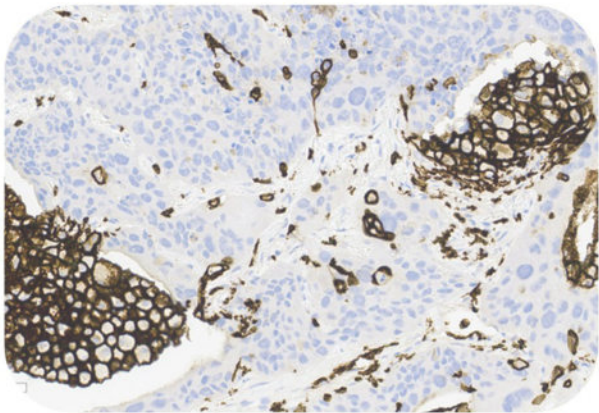
Immunohistochemistry (Formalin/PFA-fixed paraffin-embedded sections) - Recombinant Monoclonal Anti-CD45(LCA) Antibody, Rabbit (1C3) (HGS-S261)  
Human Esophagus Tissue, 20X



Immunohistochemistry (Formalin/PFA-fixed paraffin-embedded sections) - Recombinant Monoclonal Anti-CD45(LCA) Antibody, Rabbit (1C3) (HGS-S261)  
Human Hepatocellular Carcinoma Tissue, 20X



Immunohistochemistry (Formalin/PFA-fixed paraffin-embedded sections) - Recombinant Monoclonal Anti-CD45(LCA) Antibody, Rabbit (1C3) (HGS-S261)  
Human Lung Cancer Tissue, 20X



Immunohistochemistry (Formalin/PFA-fixed paraffin-embedded sections) - Recombinant Monoclonal Anti-CD45(LCA) Antibody, Rabbit (1C3) (HGS-S261)  
Human Lung Cancer Tissue, 20X

Immunohistochemical analysis of paraffin embedded human cancer tissue labelled with HGS-S261 at 1/1000 dilution.  
Perform heat mediated antigen retrieval with Tris/EDTA buffer pH 9.0 before commencing with IHC staining protocol.

Discounts, Gifts,  
and more!



Recombinant Monoclonal Anti-CD45(LCA) Antibody, Rabbit (1C3)

Catalog # HGS-S261

