

Background

Recombinant Monoclonal Anti-EGFR Antibody, Rabbit (5A6) is a EGFR primary antibody for IHC application. Receptor tyrosine kinase binding ligands of the EGF family and activating several signaling cascades to convert extracellular cues into appropriate cellular responses. Known ligands include EGF, TGFA/TGF-alpha, AREG, epigen/EPGN, BTC/betacellulin, epiregulin/EREG and HBEGF/heparin-binding EGF. Ligand binding triggers receptor homo- and/or heterodimerization and autophosphorylation on key cytoplasmic residues. The phosphorylated receptor recruits adapter proteins like GRB2 which in turn activates complex downstream signaling cascades. Activates at least 4 major downstream signaling cascades including the RAS-RAF-MEK-ERK, PI3 kinase-AKT, PLCgamma-PKC and STATs modules 13. May also activate the NF-kappa-B signaling cascade. Also directly phosphorylates other proteins like RGS16, activating its GTPase activity and probably coupling the EGF receptor signaling to the G protein-coupled receptor signaling. Also phosphorylates MUC1 and increases its interaction with SRC and CTNNB1/beta-catenin. Positively regulates cell migration via interaction with CCDC88A/GIV which retains EGFR at the cell membrane following ligand stimulation, promoting EGFR signaling which triggers cell migration. Plays a role in enhancing learning and memory performance (By similarity).

Key parameter

| | |
|------------------|-----------------------|
| Host Species | Rabbit |
| Isotype | IgG |
| Clone | 5A6 |
| Application | IHC |
| Property | 1: 1000 |
| State | Liquid |
| Positive Control | Human placentaTissues |
| Clonality | Monoclonal |
| Research Field | Cancer Drug Targets |
| Source | Rabbit |
| Synonym | ERBB, ERBB1 |

Experiment Protocol

LEICA Experiment Protocol(Manual)

Storage

Shipped at 4°C. Store at +4°C short term (1-2 weeks). Upon delivery aliquot. Store at -20°C long term. Avoid freeze / thaw cycle. The shelf life is 30 days from the date of opening.

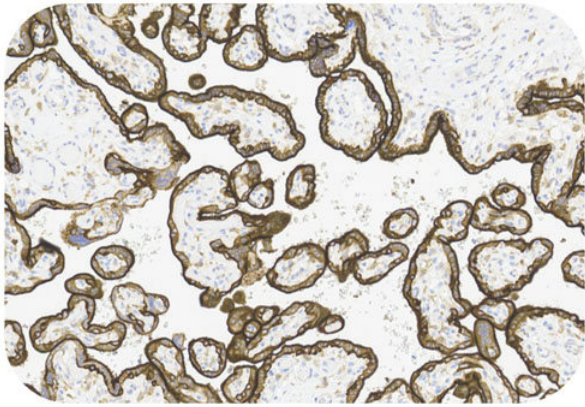
Typical Data

Control Sample

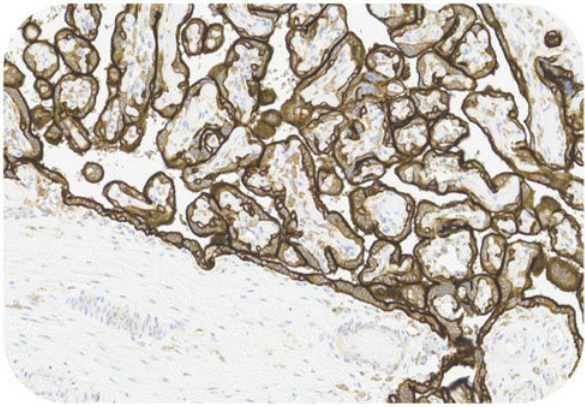


Recombinant Monoclonal Anti-EGFR Antibody, Rabbit (5A6)

Catalog # HGS-S264



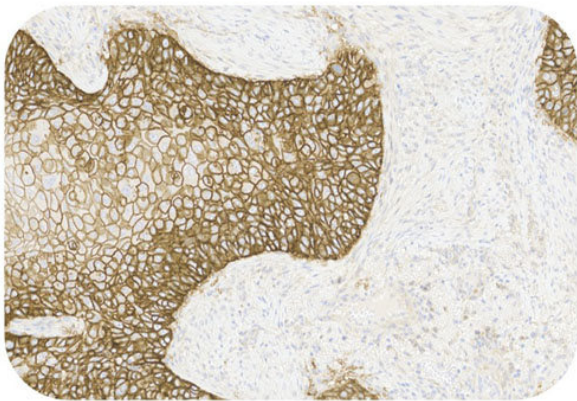
Immunohistochemistry (Formalin/PFA-fixed paraffin-embedded sections) - Recombinant Monoclonal Anti-EGFR Antibody, Rabbit (5A6) (HGS-S264)
Human Placenta Tissue, 20X



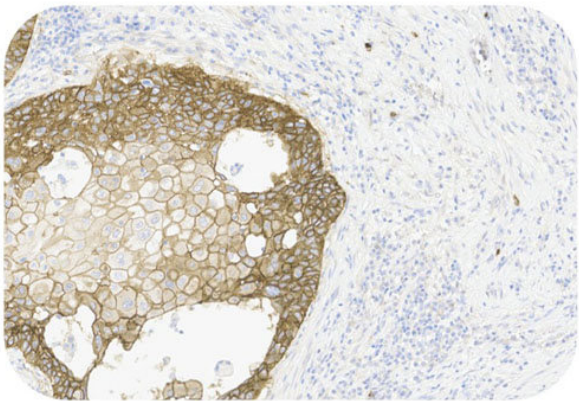
Immunohistochemistry (Formalin/PFA-fixed paraffin-embedded sections) - Recombinant Monoclonal Anti-EGFR Antibody, Rabbit (5A6) (HGS-S264)
Human Placenta Tissue, 20X

Immunohistochemical analysis of paraffin embedded Human tonsil tissue labelled with HGS-S264 at 1/1000 dilution.
Perform heat mediated antigen retrieval with Tris/EDTA buffer pH 9.0 before commencing with IHC staining protocol.

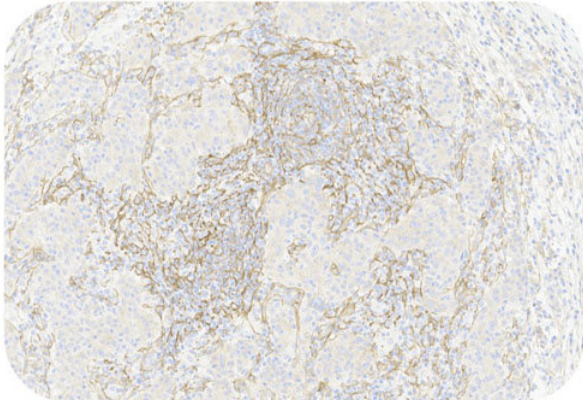
Cancer Sample



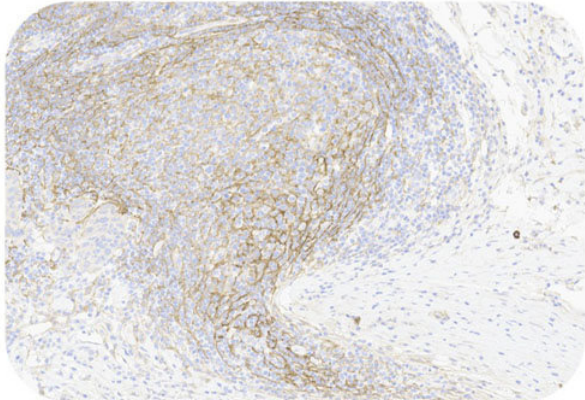
Immunohistochemistry (Formalin/PFA-fixed paraffin-embedded sections) - Recombinant Monoclonal Anti-EGFR Antibody, Rabbit (5A6) (HGS-S264)
Human Esophagus Cancer Tissue, 20X



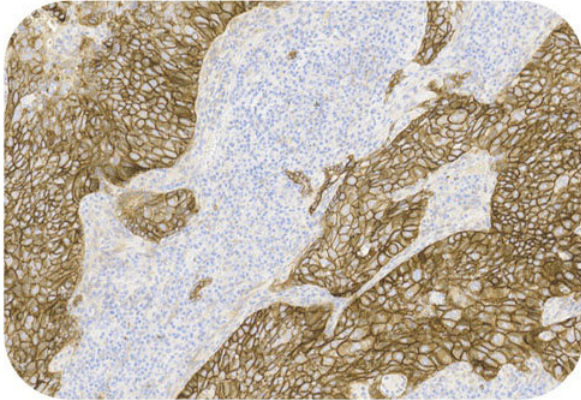
Immunohistochemistry (Formalin/PFA-fixed paraffin-embedded sections) - Recombinant Monoclonal Anti-EGFR Antibody, Rabbit (5A6) (HGS-S264)
Human Esophagus Cancer Tissue, 20X



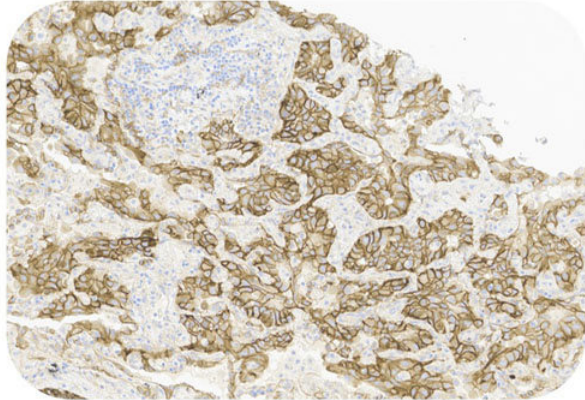
Immunohistochemistry (Formalin/PFA-fixed paraffin-embedded sections) - Recombinant Monoclonal Anti-EGFR Antibody, Rabbit (5A6) (HGS-S264)
Human Gastric Cancer Tissue, 20X



Immunohistochemistry (Formalin/PFA-fixed paraffin-embedded sections) - Recombinant Monoclonal Anti-EGFR Antibody, Rabbit (5A6) (HGS-S264)
Human Gastric Cancer Tissue, 20X



Immunohistochemistry (Formalin/PFA-fixed paraffin-embedded sections) - Recombinant Monoclonal Anti-EGFR Antibody, Rabbit (5A6) (HGS-S264)
Human Lung Cancer Tissue, 20X



Immunohistochemistry (Formalin/PFA-fixed paraffin-embedded sections) - Recombinant Monoclonal Anti-EGFR Antibody, Rabbit (5A6) (HGS-S264)
Human Lung Cancer Tissue, 20X

Immunohistochemical analysis of paraffin embedded human cancer tissue labelled with HGS-S264 at 1/1000 dilution.
Perform heat mediated antigen retrieval with Tris/EDTA buffer pH 9.0 before commencing with IHC staining protocol.



Recombinant Monoclonal Anti-EGFR Antibody, Rabbit (5A6)

Catalog # HGS-S264

