

Background

Recombinant Monoclonal Anti-EpCAM Antibody, Rabbit (6C3) is a EpCAM primary antibody for IHC application. May act as a physical homophilic interaction molecule between intestinal epithelial cells (IECs) and intraepithelial lymphocytes (IELs) at the mucosal epithelium for providing immunological barrier as a first line of defense against mucosal infection. Plays a role in embryonic stem cells proliferation and differentiation. Up-regulates the expression of FABP5, MYC and cyclins A and E.

Key parameter

Host Species	Rabbit
Isotype	IgG
Clone	6C3
Application	IHC
Property	1: 1000
State	Liquid
Positive Control	Human parathyroid glandTissues
Clonality	Monoclonal
Research Field	Cancer Drug Targets
Source	Rabbit
Synonym	17-1A, 323/A3, CD326, CO-17A, EGP-2, EGP34, EGP40, Ep-CAM, ESA, GA733-2, HEA125, KS1/4, KSA, Ly74, M4S1, MH99, MIC18, MK-1, MOC31, TACST-1, TACSTD1, TROP1

Experiment Protocol

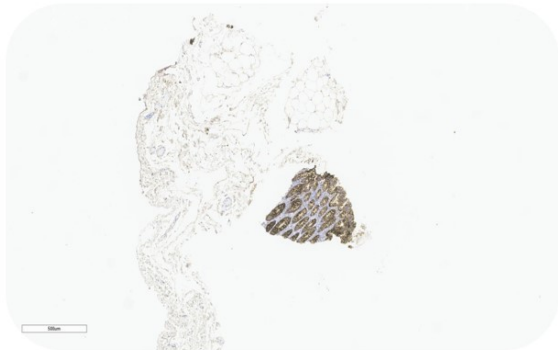
LEICA Experiment Protocol(Manual)

Storage

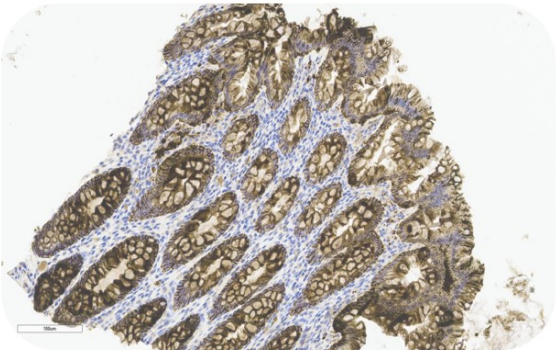
Shipped at 4°C. Store at +4°C short term (1-2 weeks). Upon delivery aliquot. Store at -20°C long term. Avoid freeze / thaw cycle. The shelf life is 30 days from the date of opening.

Typical Data

Control Sample



Immunohistochemistry (Formalin/PFA-fixed paraffin-embedded sections) -Recombinant Monoclonal Anti-EpCAM Antibody, Rabbit (6C3)  
Human Colorectal Tissue, 4X



Immunohistochemistry (Formalin/PFA-fixed paraffin-embedded sections) -Recombinant Monoclonal Anti-EpCAMAntibody, Rabbit (6C3)  
Human Colorectal Tissue, 20X

Discounts, Gifts,  
and more!





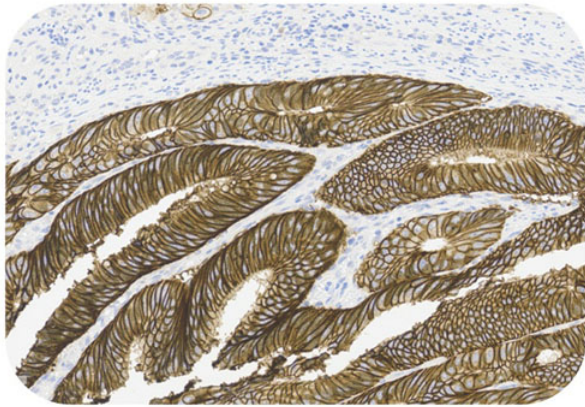
Recombinant Monoclonal Anti-EpCAM Antibody, Rabbit (6C3)

Catalog # HGS-S265

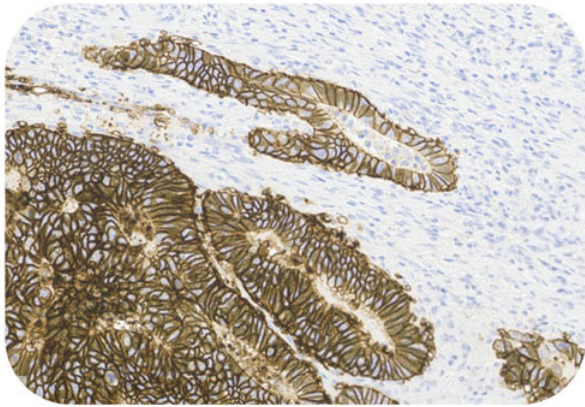


Immunohistochemical analysis of paraffin embedded Human tonsil tissue labelled with HGS-S265 at 1/1000 dilution.  
Perform heat mediated antigen retrieval with Tris/EDTA buffer pH 9.0 before commencing with IHC staining protocol.

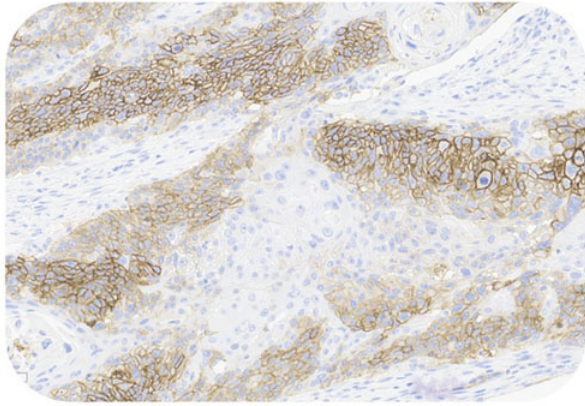
Cancer Sample



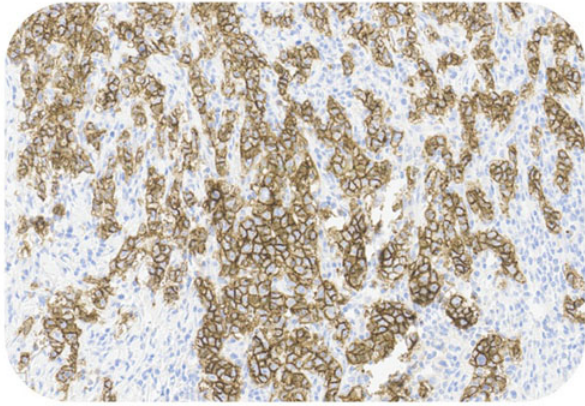
Immunohistochemistry (Formalin/PFA-fixed paraffin-embedded sections) - Recombinant Monoclonal Anti-EpCAM Antibody, Rabbit (6C3) (HGS-S265)  
Human Colorectal Cancer Tissue, 20X



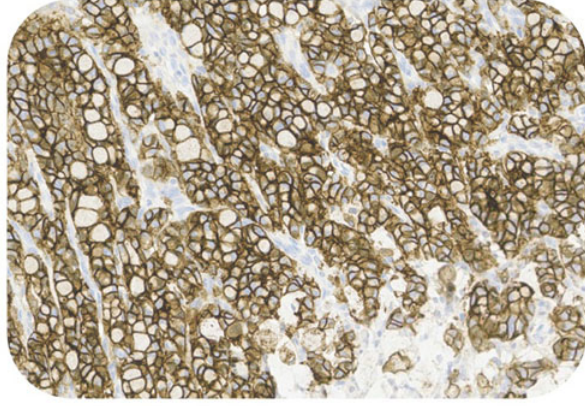
Immunohistochemistry (Formalin/PFA-fixed paraffin-embedded sections) - Recombinant Monoclonal Anti-EpCAM Antibody, Rabbit (6C3) (HGS-S265)  
Human Colorectal Cancer Tissue, 20X



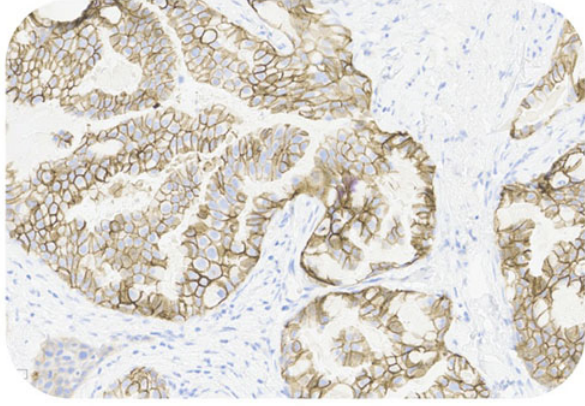
Immunohistochemistry (Formalin/PFA-fixed paraffin-embedded sections) - Recombinant Monoclonal Anti-EpCAM Antibody, Rabbit (6C3) (HGS-S265)  
Human Esophagus Cancer Tissue, 20X



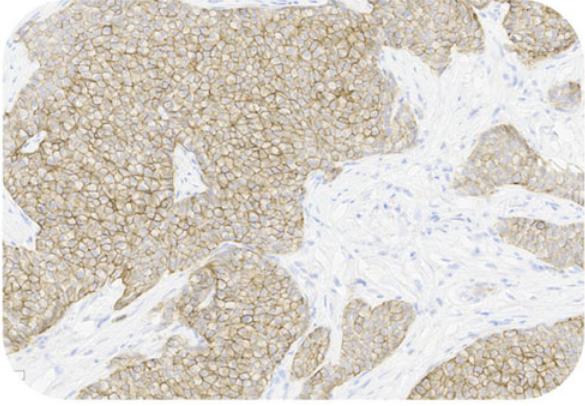
Immunohistochemistry (Formalin/PFA-fixed paraffin-embedded sections) - Recombinant Monoclonal Anti-EpCAM Antibody, Rabbit (6C3) (HGS-S265)  
Human Gastric Cancer Tissue, 20X



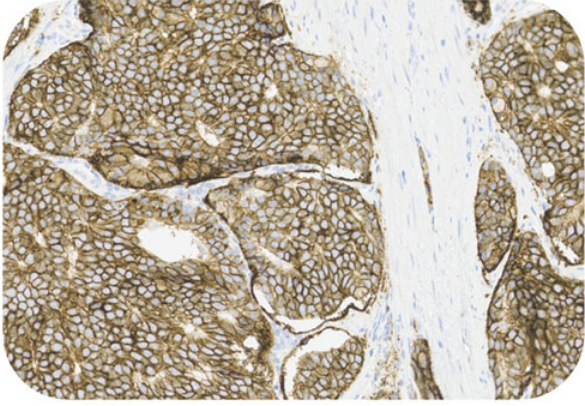
Immunohistochemistry (Formalin/PFA-fixed paraffin-embedded sections) - Recombinant Monoclonal Anti-EpCAM Antibody, Rabbit (6C3) (HGS-S265)  
Human Gastric Cancer Tissue, 20X



Immunohistochemistry (Formalin/PFA-fixed paraffin-embedded sections) - Recombinant Monoclonal Anti-EpCAM Antibody, Rabbit (6C3) (HGS-S265)  
Human Breast Cancer Tissue, 20X



Immunohistochemistry (Formalin/PFA-fixed paraffin-embedded sections) - Recombinant Monoclonal Anti-EpCAM Antibody, Rabbit (6C3) (HGS-S265)  
Human Breast Cancer Tissue, 20X



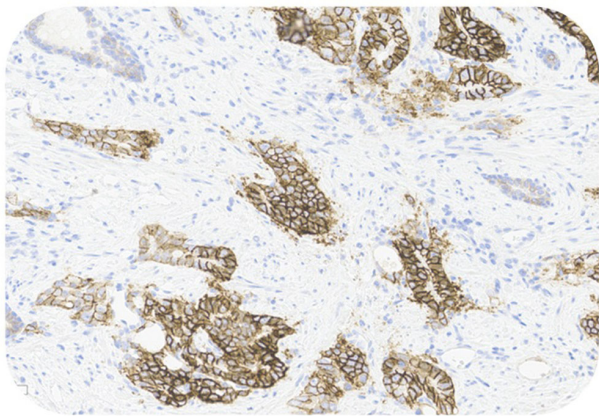
Immunohistochemistry (Formalin/PFA-fixed paraffin-embedded sections) - Recombinant Monoclonal Anti-EpCAM Antibody, Rabbit (6C3) (HGS-S265)  
Human Prostatic Cancer Tissue, 20X





Recombinant Monoclonal Anti-EpCAM Antibody, Rabbit (6C3)

Catalog # HGS-S265



Immunohistochemistry (Formalin/PFA-fixed paraffin-embedded sections) - Recombinant Monoclonal Anti-EpCAM Antibody, Rabbit (6C3) (HGS-S265)  
Human Prostatic Cancer Tissue, 20X

**Immunohistochemical analysis of paraffin embedded human cancer tissue labelled with HGS-S265 at 1/1000 dilution.**  
Perform heat mediated antigen retrieval with Tris/EDTA buffer pH 9.0 before commencing with IHC staining protocol.

