

Biotinylated Human HLA-A*24:02&B2M&NY-ESO-1 (LLMWITQCF) Complex Protein (Monomer, MALS verified)

Catalog # HL1-H82E3



Synonym

HLA-A*2402 & B2M & NY-ESO-1 (LLMWITQCF)

Source

Biotinylated Human HLA-A*24:02&B2M&NY-ESO-1 (LLMWITQCF) Complex Protein(HL1-H82E3) is expressed from human 293 cells (HEK293). It contains AA Gly 25 - Thr 305 (HLA-A*24:02) & Ile 21 - Met 119 (B2M) & LLMWITQCF peptide (Accession # [AAA59600.1](#) (HLA-A*24:02) & [P61769](#) (B2M) & LLMWITQCF).
Predicted N-terminus: Gly 25 & Ile 21

Molecular Characterization

Biotinylated Human HLA-A*24:02&B2M&NY-ESO-1 (LLMWITQCF) Complex Protein is produced by co-expression of HLA and B2M loaded with NY-ESO-1 peptide.

This protein carries a polyhistidine tag at the C-terminus, followed by an Avi tag (Avitag™).

The protein has a calculated MW of 35.8 kDa and 11.7 kDa. The protein migrates as 38-42 kDa and <14 kDa when calibrated against [Star Ribbon Pre-stained Protein Marker](#) under reducing (R) condition (SDS-PAGE) due to glycosylation.

Labeling

Biotinylation of this product is performed using Avitag™ technology. Briefly, the single lysine residue in the Avitag is enzymatically labeled with biotin.

Purity

>90% as determined by SDS-PAGE.
>90% as determined by SEC-MALS.

Formulation

Supplied as 0.2 μm filtered solution in PBS, pH7.4 with trehalose as protectant.
Contact us for customized product form or formulation.

Shipping

This product is supplied and shipped with dry ice, please inquire the shipping cost.

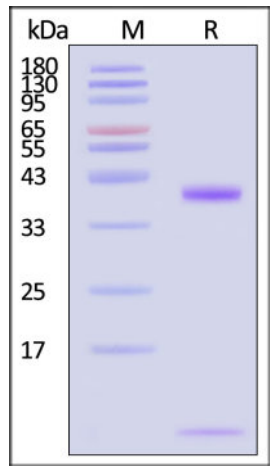
Storage

Please avoid repeated freeze-thaw cycles.

This product is stable after storage at:

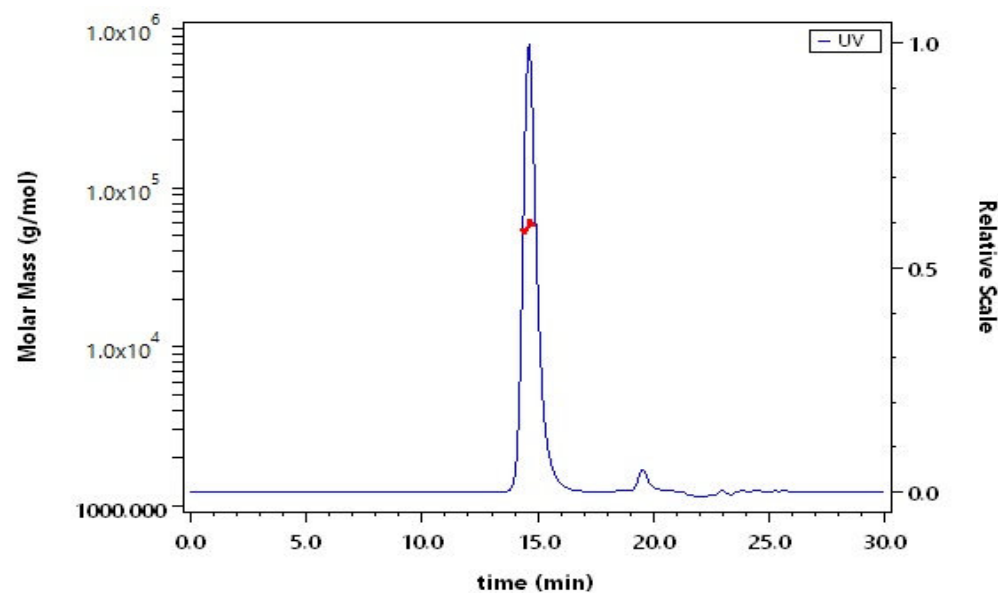
- The product MUST be stored at -70°C or lower upon receipt;
- -70°C for 3 months under sterile conditions.

SDS-PAGE



Biotinylated Human HLA-A*24:02&B2M&NY-ESO-1 (LLMWITQCF) Complex Protein on SDS-PAGE under reducing (R) condition. The gel was stained with Coomassie Blue. The purity of the protein is greater than 90% (With [Star Ribbon Pre-stained Protein Marker](#)).

SEC-MALS



The purity of Biotinylated Human HLA-A*24:02&B2M&NY-ESO-1 (LLMWITQCF) Complex Protein (Cat. No. HL1-H82E3) is more than 90% and the molecular weight of this protein is around 45-65 kDa verified by SEC-MALS.
[Report](#)



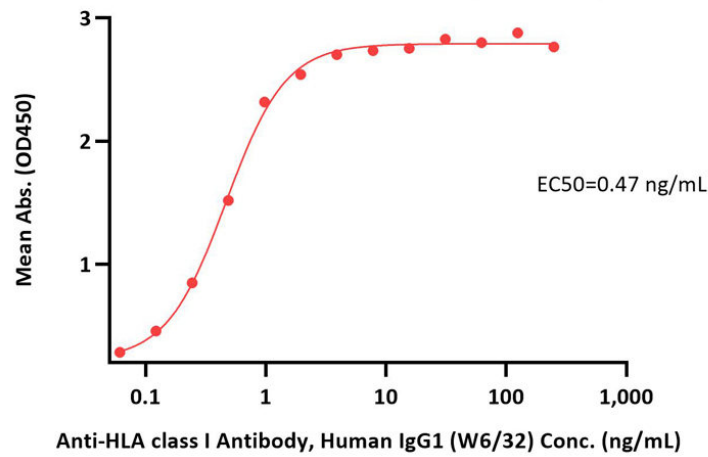
Biotinylated Human HLA-A*24:02&B2M&NY-ESO-1 (LLMWITQCF) Complex Protein (Monomer, MALS verified)

Catalog # HL1-H82E3



Bioactivity-ELISA

Biotinylated Human HLA-A*24:02&B2M&NY-ESO-1 (LLMWITQCF) Complex Protein ELISA
0.1 µg of Biotinylated Human HLA-A*24:02&B2M&NY-ESO-1 (LLMWITQCF) Complex Protein per well



Immobilized Biotinylated Human HLA-A*24:02&B2M&NY-ESO-1 (LLMWITQCF) Complex Protein (Cat. No. HL1-H82E3) at 1 µg/mL (100 µL/well) on streptavidin (Cat. No. STN-N5116) precoated (0.5 µg/well) plate can bind Anti-HLA class I Antibody, Human IgG1 (W6/32) with a linear range of 0.1-1 ng/mL (QC tested).

Background

NY-ESO-1, which is also well-known as New York esophageal squamous cell carcinoma 1, is an efficient target for cancer immunotherapy. This antigen is a member of cancer-testis antigens (CTAs) and is highly expressed in various cancers, including melanoma, ovarian, cervical cancer, etc. Adoptive T cell therapy with HLA-A24 restricted NY-ESO-1 transduced CD8+ T cells has improved the clinical response rates and overall survival of treatment-refractory melanoma patients. The Human HLA-A*2402 NY-ESO-1 (LLMWITQCF) complex protein is a complex of HLA-A*2402 of the MHC Class I, B2M and LLMWITQCF peptide of the NY-ESO-1.

Discounts, Gifts,
and more!

