

Biotinylated Human HLA-A\*02:01&B2M&PSMA (MMNDQLMFL) Complex Protein (Monomer, MALS verified)

Catalog # HLA-H82E6



Synonym

HLA-A\*0201 & B2M & PSMA (MMNDQLMFL)

Source

Biotinylated Human HLA-A\*02:01&B2M&PSMA (MMNDQLMFL) Complex Protein(HLA-H82E6) is expressed from human 293 cells (HEK293). It contains AA Gly 25 - Ile 308 (HLA-A\*02:01) & Ile 21 - Met 119 (B2M) & MMNDQLMFL peptide (Accession # [AAA59606.1](#) (HLA-A\*02:01) & [P61769](#) (B2M) & MMNDQLMFL).  
Predicted N-terminus: Gly 25 & Ile 21

Molecular Characterization

Biotinylated Human HLA-A\*02:01&B2M&PSMA (MMNDQLMFL) Complex Protein is produced by co-expression of HLA and B2M loaded with PSMA peptide.  
This protein carries a polyhistidine tag at the C-terminus, followed by an Avi tag (Avitag™).  
The protein has a calculated MW of 36.3 kDa and 11.7 kDa. The protein migrates as 40-43 kDa and 10 kDa when calibrated against [Star Ribbon Pre-stained Protein Marker](#) under reducing (R) condition (SDS-PAGE) due to glycosylation.

Labeling

*Biotinylation of this product is performed using Avitag™ technology. Briefly, the single lysine residue in the Avitag is enzymatically labeled with biotin.*

Purity

>90% as determined by SDS-PAGE.  
>90% as determined by SEC-MALS.

Formulation

Lyophilized from 0.22 µm filtered solution in PBS, pH7.4 with trehalose as protectant.  
Contact us for customized product form or formulation.

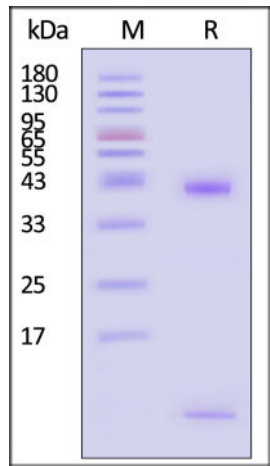
Reconstitution

Please see Certificate of Analysis for specific instructions.  
*For best performance, we strongly recommend you to follow the reconstitution protocol provided in the CoA.*

Storage

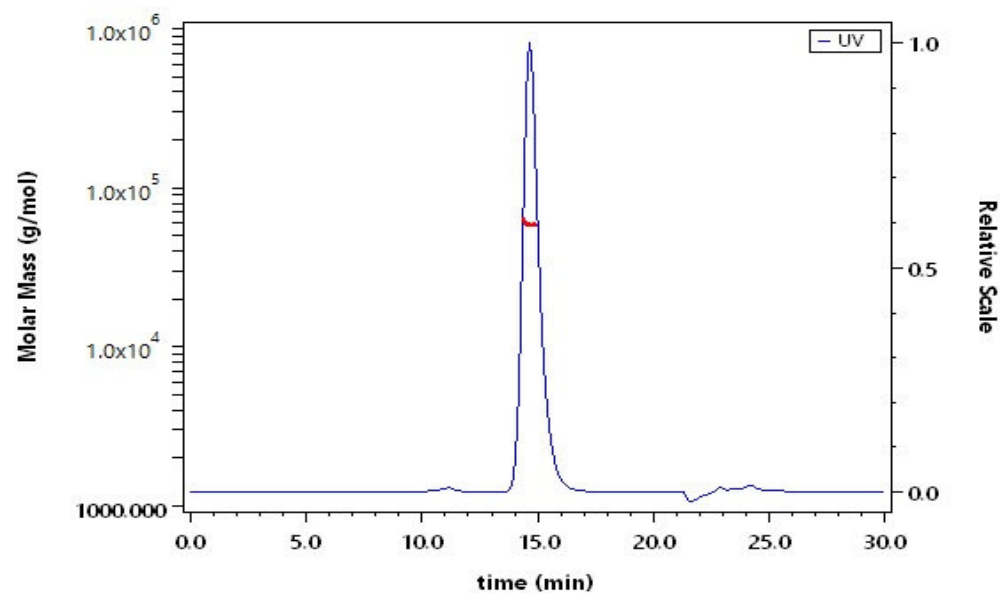
For long term storage, the product should be stored at lyophilized state at -20°C or lower.  
*Please avoid repeated freeze-thaw cycles.*  
This product is stable after storage at:  
• -20°C to -70°C for 12 months in lyophilized state;  
• -70°C for 3 months under sterile conditions after reconstitution.

SDS-PAGE



Biotinylated Human HLA-A\*02:01&B2M&PSMA (MMNDQLMFL) Complex Protein on SDS-PAGE under reducing (R) condition. The gel was stained with Coomassie Blue. The purity of the protein is greater than 90% (With [Star Ribbon Pre-stained Protein Marker](#)).

SEC-MALS



The purity of Biotinylated Human HLA-A\*02:01&B2M&PSMA (MMNDQLMFL) Complex Protein (Cat. No. HLA-H82E6) is more than 90% and the molecular weight of this protein is around 45-65 kDa verified by SEC-MALS.  
[Report](#)



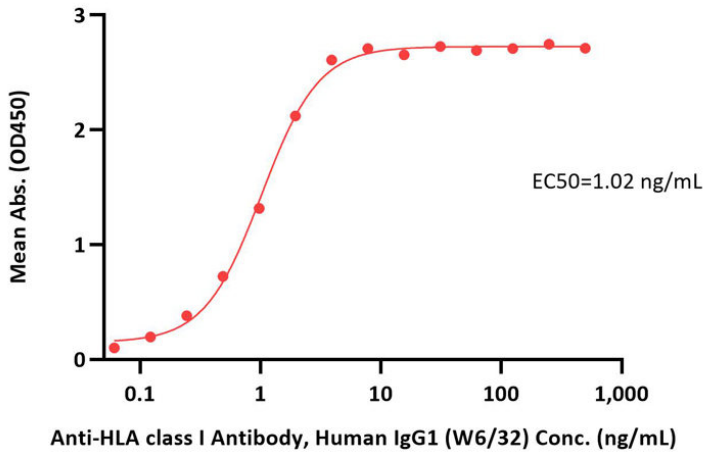
Biotinylated Human HLA-A\*02:01&B2M&PSMA (MMNDQLMFL) Complex Protein (Monomer, MALS verified)

Catalog # HLA-H82E6



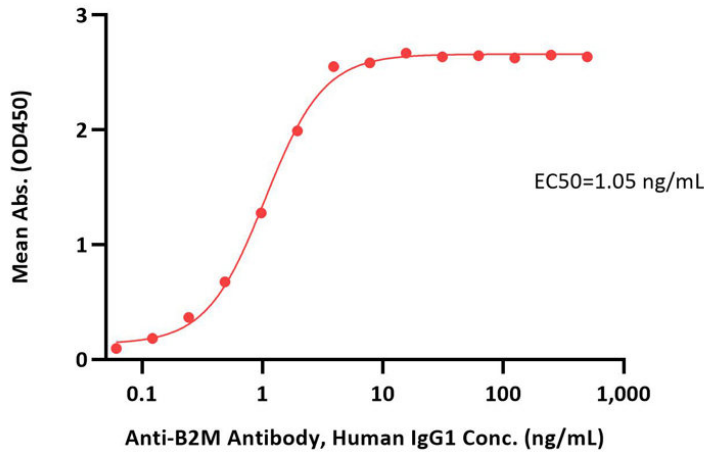
Bioactivity-ELISA

Biotinylated Human HLA-A\*02:01&B2M&PSMA (MMNDQLMFL) Complex Protein ELISA  
0.1 µg of Biotinylated Human HLA-A\*02:01&B2M&PSMA (MMNDQLMFL) Complex Protein per well=



Immobilized Biotinylated Human HLA-A\*02:01&B2M&PSMA (MMNDQLMFL) Complex Protein (Cat. No. HLA-H82E6) at 1 µg/mL (100 µL/well) on streptavidin (Cat. No. STN-N5116) precoated (0.5 µg/well) plate can bind Anti-HLA class I Antibody, Human IgG1 (W6/32) with a linear range of 0.1-2 ng/mL (QC tested).

Biotinylated Human HLA-A\*02:01&B2M&PSMA (MMNDQLMFL) Complex Protein ELISA  
0.1 µg of Biotinylated Human HLA-A\*02:01&B2M&PSMA (MMNDQLMFL) Complex Protein per well=



Immobilized Biotinylated Human HLA-A\*02:01&B2M&PSMA (MMNDQLMFL) Complex Protein (Cat. No. HLA-H82E6) at 1 µg/mL (100 µL/well) on streptavidin (Cat. No. STN-N5116) precoated (0.5 µg/well) plate can bind Anti-B2M Antibody, Human IgG1 with a linear range of 0.1-2 ng/mL (Routinely tested).

Background

Prostate-specific membrane antigen (PSMA) is also known as Folate hydrolase 1 (FOLH1), Glutamate carboxypeptidase 2 (GCP2), N-acetylated-alpha-linked acidic dipeptidase I (NAALAD1), which belongs to the peptidase M28 family and M28B subfamily. FOLH1 / PSMA is a type II transmembrane zinc metallopeptidase that is most highly expressed in the nervous system, prostate, kidney, and small intestine. The Human HLA-A\*0201 PSMA (MMNDQLMFL) complex protein is a complex of HLA-A\*0201 of the MHC Class I, B2M and MMNDQLMFL peptide of the PSMA.

Discounts, Gifts,  
and more!

