

Biotinylated Human HLA-A\*11:01&B2M&KRASG12D (VVGADGVGK) Complex Protein (Monomer, MALS verified)

Catalog # HLD-H82E5



Synonym

HLA-A\*1101 & B2M & KRASG12D (VVGADGVGK)

Source

Biotinylated Human HLA-A\*11:01&B2M&KRASG12D (VVGADGVGK) Complex Protein(HLD-H82E5) is expressed from human 293 cells (HEK293). It contains AA Gly 25 - Thr 305 (HLA-A\*11:01) & Ile 21 - Met 119 (B2M) & VVGADGVGK peptide (Accession # [Q5S3G3-1](#) (HLA-A\*11:01) & [P61769](#) (B2M) & VVGADGVGK).  
Predicted N-terminus: Gly 25 & Ile 21

Molecular Characterization

Biotinylated Human HLA-A\*11:01&B2M&KRASG12D (VVGADGVGK) Complex Protein is produced by co-expression of HLA and B2M loaded with KRASG12D peptide.  
This protein carries a polyhistidine tag at the C-terminus, followed by an Avi tag (Avitag™).  
The protein has a calculated MW of 36.0 kDa and 11.7 kDa. The protein migrates as 40-45 kDa and 12 kDa under reducing (R) condition (SDS-PAGE) due to glycosylation.

Labeling

*Biotinylation of this product is performed using Avitag™ technology. Briefly, the single lysine residue in the Avitag is enzymatically labeled with biotin.*

Purity

>90% as determined by SDS-PAGE.  
>90% as determined by SEC-MALS.

Formulation

Lyophilized from 0.22 µm filtered solution in PBS, pH7.4 with trehalose as protectant.  
Contact us for customized product form or formulation.

Reconstitution

Please see Certificate of Analysis for specific instructions.  
*For best performance, we strongly recommend you to follow the reconstitution protocol provided in the CoA.*

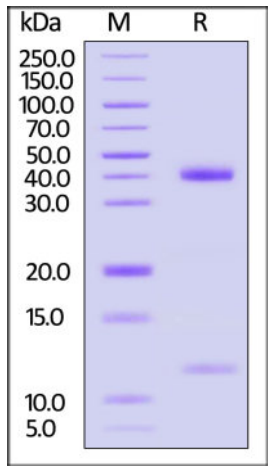
Storage

For long term storage, the product should be stored at lyophilized state at -20°C or lower.  
*Please avoid repeated freeze-thaw cycles.*

This product is stable after storage at:

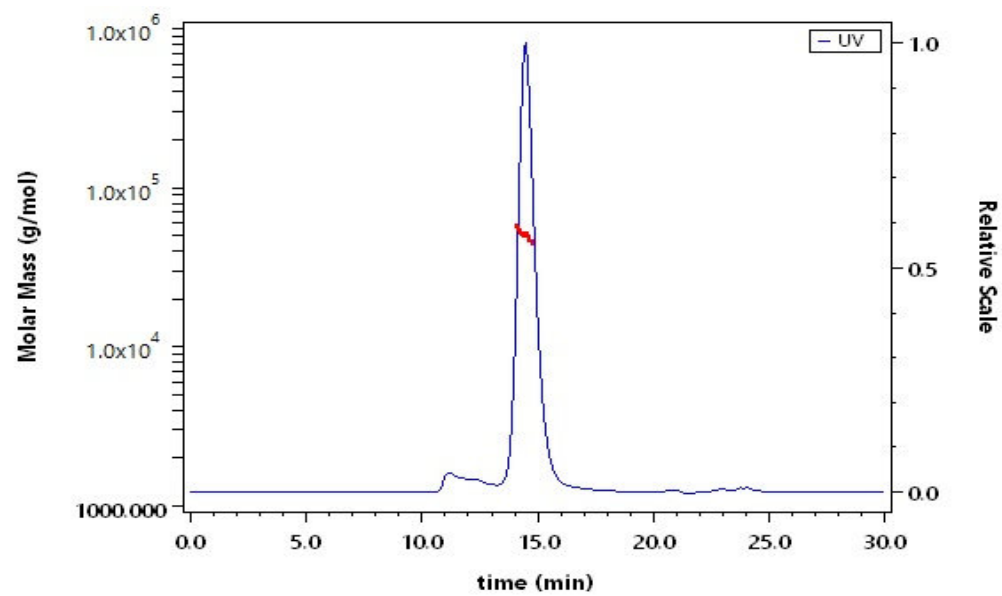
- 20°C to -70°C for 12 months in lyophilized state;
- 70°C for 3 months under sterile conditions after reconstitution.

SDS-PAGE



Biotinylated Human HLA-A\*11:01&B2M&KRASG12D (VVGADGVGK) Complex Protein on SDS-PAGE under reducing (R) condition. The gel was stained with Coomassie Blue. The purity of the protein is greater than 90%.

SEC-MALS



The purity of Biotinylated Human HLA-A\*11:01&B2M&KRASG12D (VVGADGVGK) Complex Protein (Cat. No. HLD-H82E5) is more than 90% and the molecular weight of this protein is around 45-60 kDa verified by SEC-MALS.  
[Report](#)

Bioactivity-ELISA

Discounts, Gifts,  
and more!

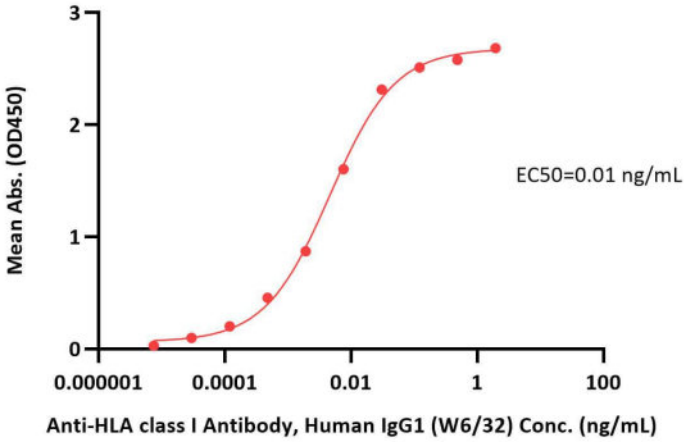


**Biotinylated Human HLA-A\*11:01&B2M&KRASG12D (VVGADGVGK) Complex Protein (Monomer, MALS verified)**

Catalog # HLD-H82E5

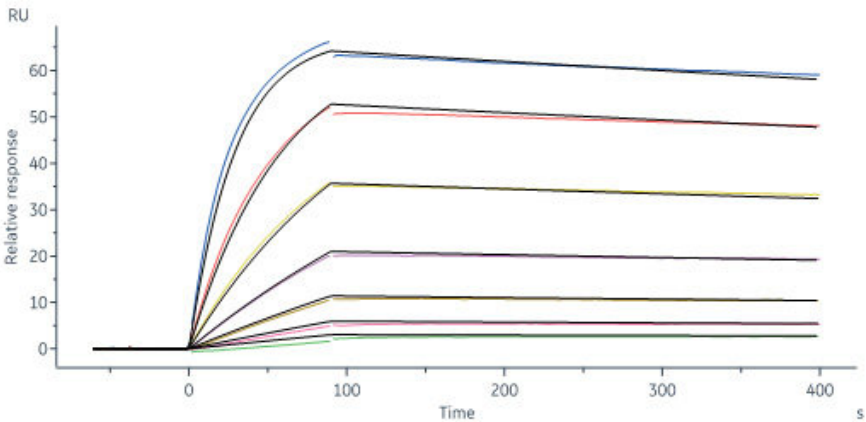


**Biotinylated Human HLA-A\*11:01&B2M&KRASG12D (VVGADGVGK) Complex Protein ELISA**  
0.1 µg of Biotinylated Human HLA-A\*11:01&B2M&KRASG12D (VVGADGVGK) Complex Protein per well



Immobilized Biotinylated Human HLA-A\*11:01&B2M&KRASG12D (VVGADGVGK) Complex Protein (Cat. No. HLD-H82E5) at 1 µg/mL (100 µL/well) on streptavidin (Cat. No. STN-N5116) precoated (0.5 µg/well) plate can bind Anti-HLA class I Antibody, Human IgG1 (W6/32) with a linear range of 0.00001-1 ng/mL (Routinely tested).

**Bioactivity-SPR**



Anti-HLA class I Antibody, Human IgG1 (W6/32) captured on Protein A Chip can bind Biotinylated Human HLA-A\*11:01&B2M&KRASG12D (VVGADGVGK) Complex Protein (Cat. No. HLD-H82E5) with an affinity constant of 1.13 nM as determined in a SPR assay (Biacore 8K) (Routinely tested).

**Background**

The Kirsten rat sarcoma 2 viral oncogene homolog (KRAS) oncogene plays a critical role in the initiation and maintenance of pancreatic tumors and its signaling network represents a major target for therapeutic intervention. The Human HLA-A\*1101 KRASG12D (VVGADGVGK) complex protein is a complex of HLA-A\*1101 of the MHC Class I, B2M, and VVGADGVGK peptide of the KRASG12D.

Discounts, Gifts,  
and more!

