

Synonym

HLA-A*1101 & B2M & KRAS (VVGAGGVGK)

Source

Human HLA-A*11:01&B2M&KRAS (VVGAGGVGK) Complex Protein(HLS-H52H5) is expressed from human 293 cells (HEK293). It contains AA Gly 25 - Thr 305 (HLA-A*11:01) & Ile 21 - Met 119 (B2M) & VVGAGGVGK peptide (Accession # [Q5S3G3-1](#) (HLA-A*11:01) & [P61769](#) (B2M) & VVGAGGVGK). Predicted N-terminus: Gly 25 & Ile 21

Molecular Characterization

Human HLA-A*11:01&B2M&KRAS (VVGAGGVGK) Complex Protein is produced by co-expression of HLA and B2M loaded with KRAS peptide.

This protein carries a polyhistidine tag at the C-terminus.

The protein has a calculated MW of 36.0 kDa and 11.7 kDa. The protein migrates as 40-45 kDa and 12 kDa under reducing (R) condition (SDS-PAGE) due to glycosylation.

Endotoxin

Less than 1.0 EU per µg by the LAL method / rFC method.

Purity

>90% as determined by SDS-PAGE.

>90% as determined by SEC-MALS.

Formulation

Lyophilized from 0.22 µm filtered solution in PBS, pH7.4 with trehalose as protectant.

Contact us for customized product form or formulation.

Reconstitution

Please see Certificate of Analysis for specific instructions.

For best performance, we strongly recommend you to follow the reconstitution protocol provided in the CoA.

Storage

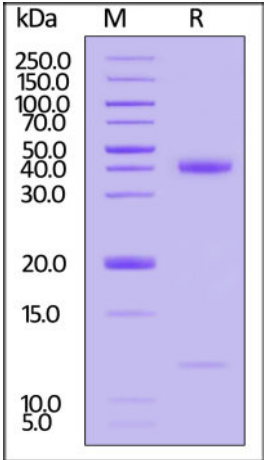
For long term storage, the product should be stored at lyophilized state at -20°C or lower.

Please avoid repeated freeze-thaw cycles.

This product is stable after storage at:

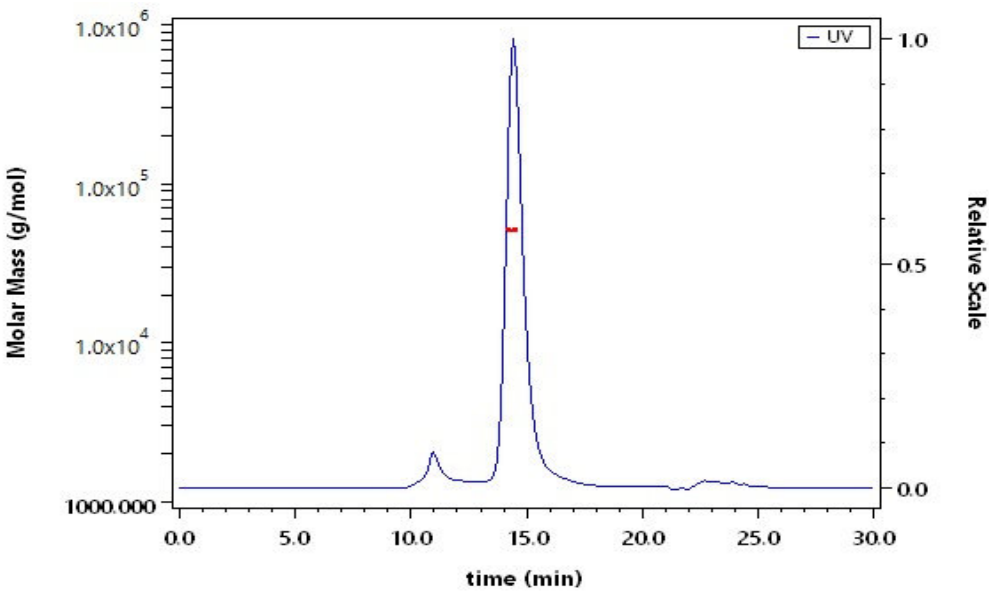
- 20°C to -70°C for 12 months in lyophilized state;
- 70°C for 3 months under sterile conditions after reconstitution.

SDS-PAGE



Human HLA-A*11:01&B2M&KRAS (VVGAGGVGK) Complex Protein on SDS-PAGE under reducing (R) condition. The gel was stained with Coomassie Blue. The purity of the protein is greater than 90%.

SEC-MALS

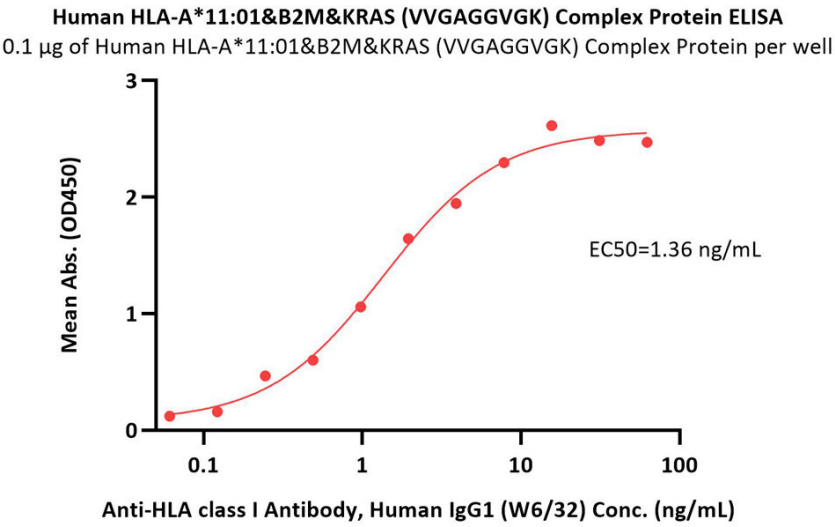


The purity of Human HLA-A*11:01&B2M&KRAS (VVGAGGVGK) Complex Protein (Cat. No. HLS-H52H5) is more than 90% and the molecular weight of this protein is around 45-60 kDa verified by SEC-MALS.

[Report](#)

Bioactivity-ELISA





Immobilized Human HLA-A*11:01&B2M&KRAS (VVGAGGVGK) Complex Protein (Cat. No. HLS-H52H5) at 1 µg/mL (100 µL/well) can bind Anti-HLA class I Antibody, Human IgG1 (W6/32) with a linear range of 0.1-4 ng/mL (QC tested).

Background

The Kirsten rat sarcoma 2 viral oncogene homolog (KRAS) oncogene plays a critical role in the initiation and maintenance of pancreatic tumors and its signaling network represents a major target for therapeutic intervention. The Human HLA-A*1101 KRAS (VVGAGGVGK) complex protein is a complex of HLA-A*1101 of the MHC Class I, B2M, and VVGAGGVGK peptide of the KRAS.

