

Synonym

Fletcher factor,kallikrein B, plasma (Fletcher factor) 1,kininogenin,KLK3  
plasma kallikrein,KLKB1,plasma kallikrein heavy chain,plasma kallikrein light  
chain,Plasma Kallikrein,Plasma Prekallikrein,PPK,KLKB1

Source

Human Plasma Kallikrein/KLKB1, His Tag(KL1-H52H9) is expressed from  
human 293 cells (HEK293). It contains AA Gly 20 - Ala 638 (Accession #  
[P03952-1](#)).  
Predicted N-terminus: Gly 20

Molecular Characterization

Plasma Kallikrein/KLKB1(Gly 20 - Ala 638) P03952-1	Poly-his
---	----------

This protein carries a polyhistidine tag at the C-terminus.  
  
The protein has a calculated MW of 71.1 kDa. The protein migrates as 70-90  
kDa when calibrated against [Star Ribbon Pre-stained Protein Marker](#) under  
reducing (R) condition (SDS-PAGE) due to glycosylation.

Endotoxin

Less than 1.0 EU per µg by the LAL method / rFC method.

Purity

>95% as determined by SDS-PAGE.  
  
>90% as determined by SEC-MALS.

Formulation

Supplied as 0.2 µm filtered solution in 50mM Tris, 150mM NaCl, pH7.5 with  
glycerol as protectant.  
  
Contact us for customized product form or formulation.

Shipping

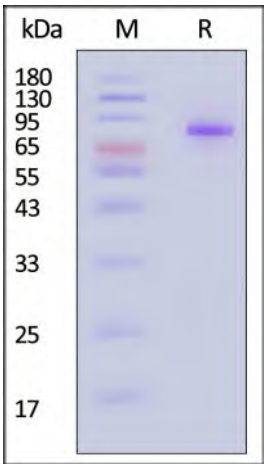
*This product is supplied and shipped with dry ice, please inquire the shipping  
cost.*

Storage

*Please avoid repeated freeze-thaw cycles.*  
  
This product is stable after storage at:  

- The product MUST be stored at -70°C or lower upon receipt;
- -70°C for 3 months under sterile conditions.

SDS-PAGE

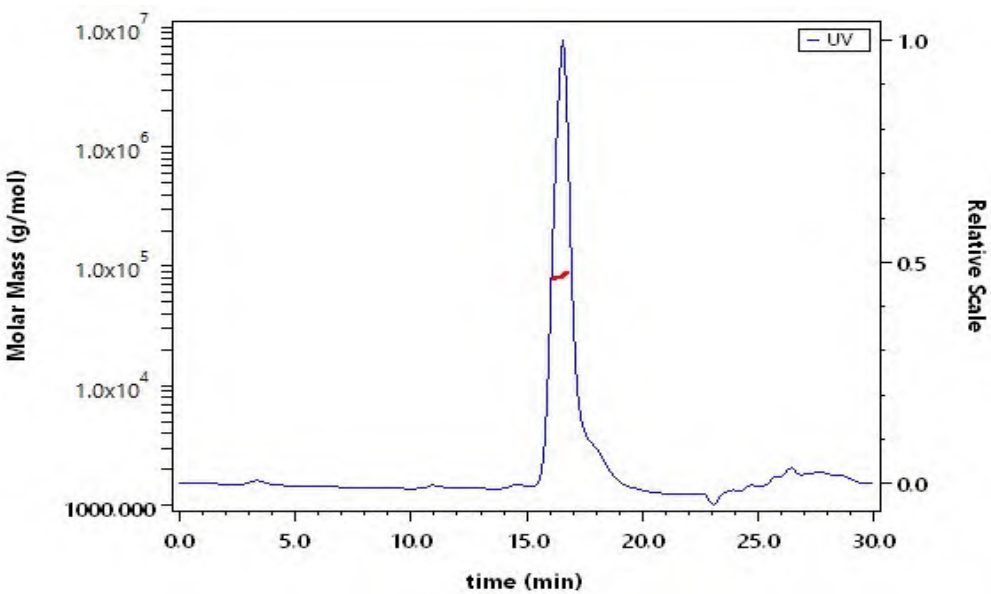


Human Plasma Kallikrein/KLKB1, His Tag on SDS-PAGE under reducing (R)  
condition. The gel was stained with Coomassie Blue. The purity of the protein  
is greater than 95% (With [Star Ribbon Pre-stained Protein Marker](#)).

Bioactivity

Measured by its ability to cleave a flourogenic peptide substrate Pro-Phe-Arg-  
7-amido-4-methylcoumarin (PFR-AMC). The specific activity is >1,000  
pmol/min/µg (QC tested).

SEC-MALS



The purity of Human Plasma Kallikrein/KLKB1, His Tag (Cat. No. KL1-  
H52H9) is more than 90% and the molecular weight of this protein is around  
75-90 kDa verified by SEC-MALS.  
[Report](#)





Background

Human Plasma Kallikrein, a serine protease, is synthesized in the liver and circulates in the plasma by binding to high molecular weight (HMW) kininogen or as a free zymogen. The enzyme cleaves Lys-Arg and Arg-Ser bonds. It activates, in a reciprocal reaction, factor XII after its binding to a negatively charged surface. It also releases bradykinin from HMW kininogen and may also play a role in the renin-angiotensin system by converting prorenin into renin.

