

Synonym

Fletcher factor,kallikrein B, plasma (Fletcher factor) 1,kininogenin,KLK3
plasma kallikrein,KLKB1,plasma kallikrein heavy chain,plasma kallikrein light
chain,Plasma Kallikrein,Plasma Prekallikrein,PPK,KLKB1

Source

Mouse Plasma Kallikrein/KLKB1, His Tag(KL1-M52H9) is expressed from
human 293 cells (HEK293). It contains AA Gly 20 - Ala 638 (Accession #
[P26262-1](#)).
Predicted N-terminus: Gly 20

Molecular Characterization

Plasma Kallikrein/KLKB1(Gly 20 - Ala 638) P26262-1	Poly-his
-------------------------------------------------------	----------

This protein carries a polyhistidine tag at the C-terminus.

The protein has a calculated MW of 71.1 kDa. The protein migrates as 33
kDa,50 kDa and 80 kDa when calibrated against [Star Ribbon Pre-stained Protein
Marker](#) under reducing (R) condition (SDS-PAGE).

Endotoxin

Less than 1.0 EU per µg by the LAL method / rFC method.

Purity

>95% as determined by SDS-PAGE.

Formulation

Lyophilized from 0.22 µm filtered solution in 50 mM Tris, 150 mM NaCl, pH7.5
with trehalose as protectant.

Contact us for customized product form or formulation.

Reconstitution

Please see Certificate of Analysis for specific instructions.

*For best performance, we strongly recommend you to follow the reconstitution
protocol provided in the CoA.*

Storage

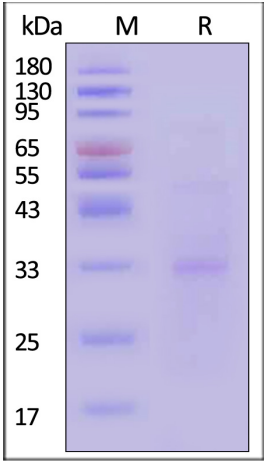
For long term storage, the product should be stored at lyophilized state at -20°C
or lower.

Please avoid repeated freeze-thaw cycles.

This product is stable after storage at:

- 20°C to -70°C for 12 months in lyophilized state;
- 70°C for 3 months under sterile conditions after reconstitution.

SDS-PAGE



Mouse Plasma Kallikrein/KLKB1, His Tag on SDS-PAGE under reducing (R)
condition. The gel was stained with Coomassie Blue. The purity of the protein
is greater than 95% (With [Star Ribbon Pre-stained Protein Marker](#)).

Bioactivity

Measured by its ability to cleave the fluorogenic peptide substrate, Mca-
RPKPVE-Nval-WRK(Dnp)-NH2 ,The specific activity is >300 pmol/min/µg
(QC tested).



Background

Human Plasma Kallikrein, a serine protease, is synthesized in the liver and circulates in the plasma by binding to high molecular weight (HMW) kininogen or as a free zymogen. The enzyme cleaves Lys-Arg and Arg-Ser bonds. It activates, in a reciprocal reaction, factor XII after its binding to a negatively charged surface. It also releases bradykinin from HMW kininogen and may also play a role in the renin-angiotensin system by converting prorenin into renin.

Discounts, Gifts,
and more!

