

Synonym

LAG3,CD223,FDC

Source

Cynomolgus LAG-3, His Tag(LA3-C82H3) is expressed from human 293 cells (HEK293). It contains AA Ala 18 - His 449 (Accession # [XP\\_005570011.1](#)).

Molecular Characterization

LAG-3(Ala 18 - His 449)  
XP\_005570011.1

Poly-his

This protein carries a polyhistidine tag at the C-terminus.

The protein has a calculated MW of 48.6 kDa. The protein migrates as 45-80 kDa under reducing (R) condition (SDS-PAGE) due to glycosylation.

Endotoxin

Less than 1.0 EU per µg by the LAL method / rFC method.

Purity

>90% as determined by SDS-PAGE.

Formulation

Lyophilized from 0.22 µm filtered solution in PBS, pH7.4 with trehalose as protectant.

Contact us for customized product form or formulation.

Reconstitution

Please see Certificate of Analysis for specific instructions.

*For best performance, we strongly recommend you to follow the reconstitution protocol provided in the CoA.*

Storage

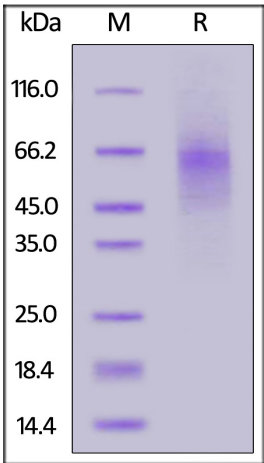
For long term storage, the product should be stored at lyophilized state at -20°C or lower.

*Please avoid repeated freeze-thaw cycles.*

This product is stable after storage at:

- 20°C to -70°C for 12 months in lyophilized state;
- 70°C for 3 months under sterile conditions after reconstitution.

SDS-PAGE



Cynomolgus LAG-3, His Tag on SDS-PAGE under reducing (R) condition. The gel was stained with Coomassie Blue. The purity of the protein is greater than 90%.

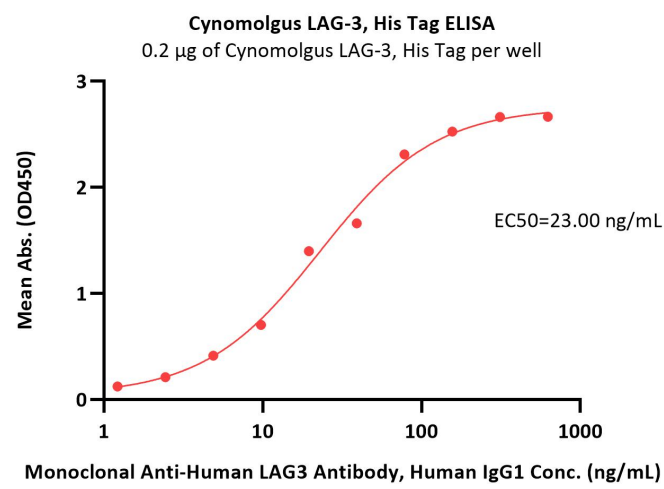
Bioactivity-ELISA

Discounts, Gifts,  
and more!



# Cynomolgus LAG-3 / CD223 Protein, His Tag

Catalog # LA3-C82H3



Immobilized Cynomolgus LAG-3, His Tag (Cat. No. LA3-C82H3) at 2 µg/mL (100 µL/well) can bind Monoclonal Anti-Human LAG3 Antibody, Human IgG1 with a linear range of 1-78 ng/mL (QC tested).

## Background

Lymphocyte activation gene 3 protein (LAG3) is also known as CD antigen CD223 and protein FDC, which belongs to immunoglobulin (Ig) superfamily and contains 4 extracellular Ig-like domains. The LAG3 gene contains 8 exons. The sequence data, exon/intron organization, and chromosomal localization all indicate a close relationship of LAG3 to CD4. LAG3 /CD223 involved in lymphocyte activation. LAG3 /CD223 binds to HLA class-II antigens.

Discounts, Gifts,  
and more!

