

Synonym

LAG3,CD223,FDC

Source

Rat LAG3, His Tag(LA3-R52H5) is expressed from human 293 cells (HEK293). It contains AA Gly 24 - Leu 442 (Accession # [NP\\_997678](#)).  
Predicted N-terminus: Gly 24

Molecular Characterization

LAG-3(Gly 24 - Leu 442)  
NP\_997678

Poly-his

This protein carries a polyhistidine tag at the C-terminus.  
The protein has a calculated MW of 47.6 kDa. The protein migrates as 55 kDa when calibrated against [Star Ribbon Pre-stained Protein Marker](#) under reducing (R) condition (SDS-PAGE) due to glycosylation.

Endotoxin

Less than 1.0 EU per µg by the LAL method / rFC method.

Purity

>90% as determined by SDS-PAGE.  
>90% as determined by SEC-HPLC.

Formulation

Lyophilized from 0.22 µm filtered solution in PBS, pH7.4 with trehalose as protectant.  
Contact us for customized product form or formulation.

Reconstitution

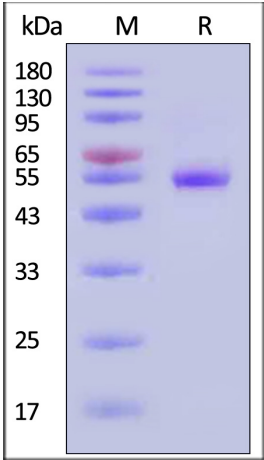
Please see Certificate of Analysis for specific instructions.  
*For best performance, we strongly recommend you to follow the reconstitution protocol provided in the CoA.*

Storage

For long term storage, the product should be stored at lyophilized state at -20°C or lower.  
*Please avoid repeated freeze-thaw cycles.*  
This product is stable after storage at:

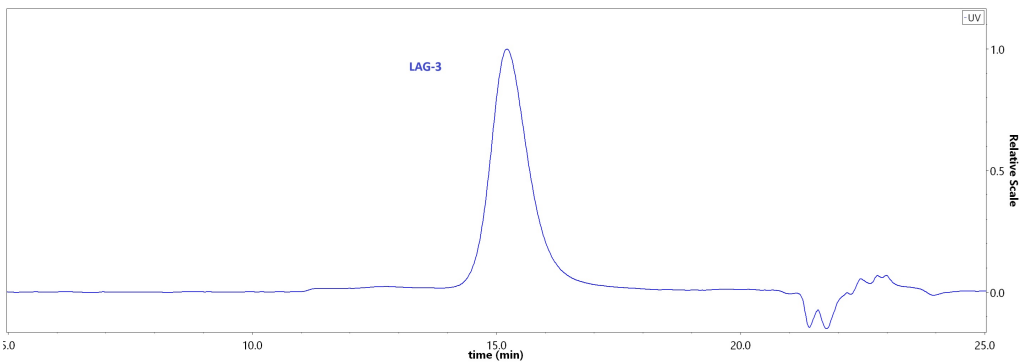
- 20°C to -70°C for 12 months in lyophilized state;
- 70°C for 3 months under sterile conditions after reconstitution.

SDS-PAGE



Rat LAG3, His Tag on SDS-PAGE under reducing (R) condition. The gel was stained with Coomassie Blue. The purity of the protein is greater than 90% (With [Star Ribbon Pre-stained Protein Marker](#)).

SEC-HPLC



The purity of Rat LAG3, His Tag (Cat. No. LA3-R52H5) was greater than 90% as determined by SEC-HPLC.

Background

Lymphocyte activation gene 3 protein (LAG3) is also known as CD antigen CD223 and protein FDC, which belongs to immunoglobulin (Ig) superfamily and contains 4 extracellular Ig-like domains. The LAG3 gene contains 8 exons. The sequence data, exon/intron organization, and chromosomal localization all indicate a

Discounts, Gifts,  
and more!



Rat LAG3 / CD223 Protein, His Tag (HPLC verified)

Catalog # LA3-R52H5



close relationship of LAG3 to CD4. LAG3 /CD223 involved in lymphocyte activation. LAG3 /CD223 binds to HLA class-II antigens.

