

Human LDL R Protein, His Tag (MALS verified)

Catalog # LDR-H5224



Synonym

LDLR,FH,FHC,LDLCQ2

Source

Human LDL R, His Tag(LDR-H5224) is expressed from human 293 cells (HEK293). It contains AA Ala 22 - Arg 788 (Accession # [NP\\_000518.1](#)).  
Predicted N-terminus: Ala 22

Molecular Characterization



This protein carries a polyhistidine tag at the C-terminus.  
The protein has a calculated MW of 85.9 kDa. The protein migrates as 120-140 kDa when calibrated against [Star Ribbon Pre-stained Protein Marker](#) under reducing (R) condition (SDS-PAGE) due to glycosylation.

Endotoxin

Less than 1.0 EU per µg by the LAL method / rFC method.

Purity

>90% as determined by SDS-PAGE.  
>95% as determined by SEC-MALS.

Formulation

Lyophilized from 0.22 µm filtered solution in PBS, pH7.4 with trehalose as protectant.  
Contact us for customized product form or formulation.

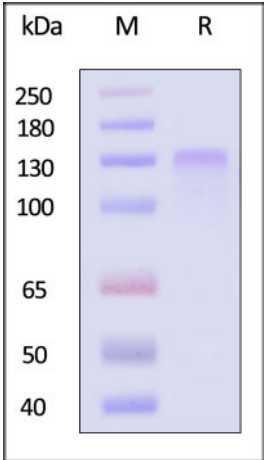
Reconstitution

Please see Certificate of Analysis for specific instructions.  
*For best performance, we strongly recommend you to follow the reconstitution protocol provided in the CoA.*

Storage

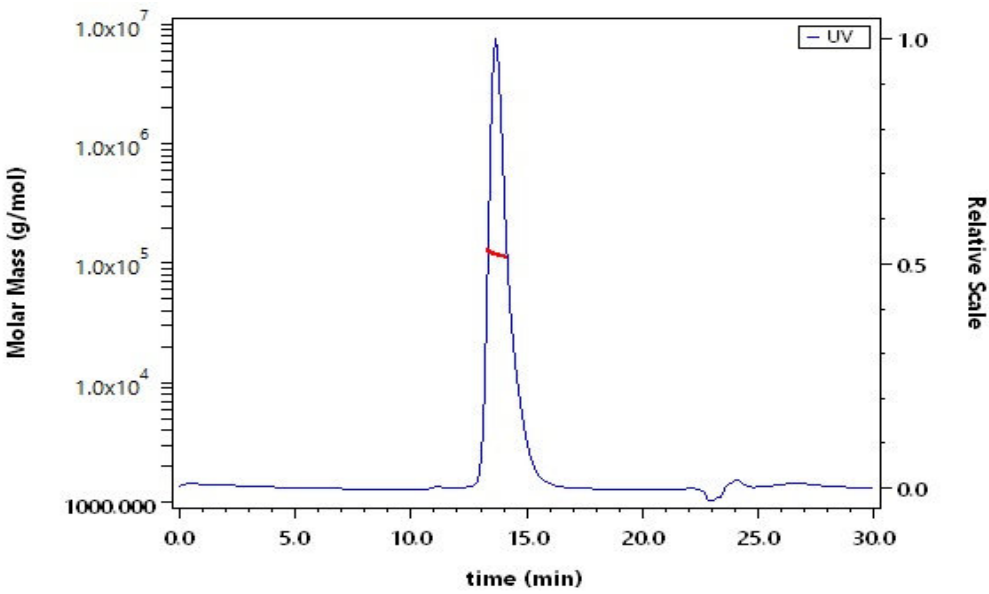
For long term storage, the product should be stored at lyophilized state at -20°C or lower.  
*Please avoid repeated freeze-thaw cycles.*  
This product is stable after storage at:  
• -20°C to -70°C for 12 months in lyophilized state;  
• -70°C for 3 months under sterile conditions after reconstitution.

SDS-PAGE



Human LDL R, His Tag on SDS-PAGE under reducing (R) condition. The gel was stained with Coomassie Blue. The purity of the protein is greater than 90% (With [Star Ribbon Pre-stained Protein Marker](#)).

SEC-MALS



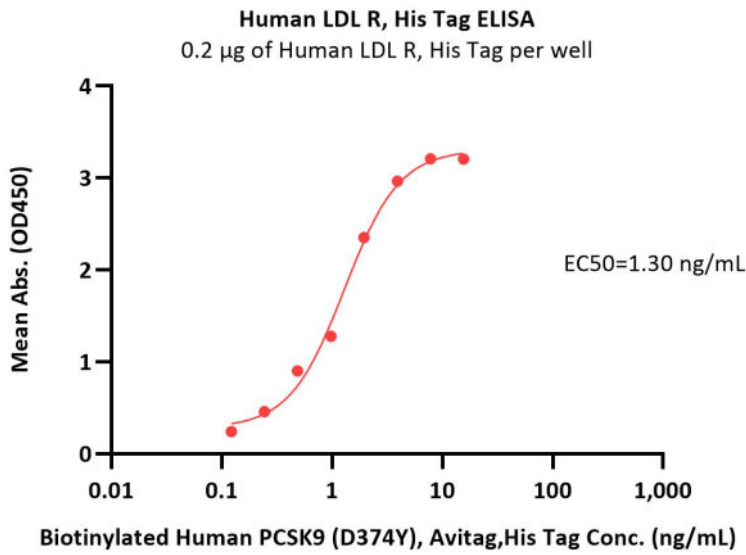
The purity of Human LDL R, His Tag (Cat. No. LDR-H5224) is more than 95% and the molecular weight of this protein is around 100-140 kDa verified by SEC-MALS.  
[Report](#)

Bioactivity-ELISA



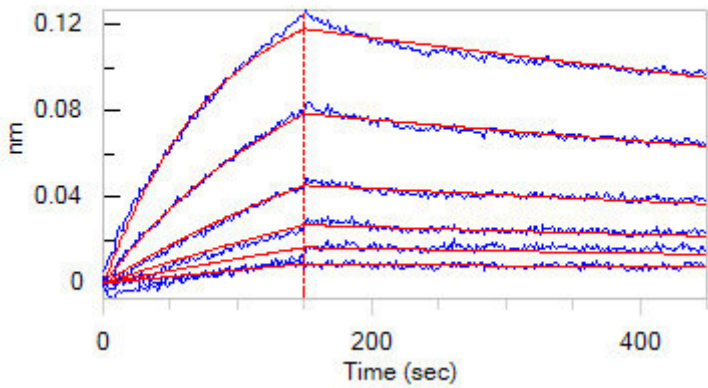
Human LDL R Protein, His Tag (MALS verified)

Catalog # LDR-H5224



Immobilized Human LDL R, His Tag (Cat. No. LDR-H5224) at 2 µg/mL (100 µL/well) can bind Biotinylated Human PCSK9 (D374Y), Avitag,His Tag (Cat. No. PCY-H82E7) with a linear range of 2-16 ng/mL (QC tested).

Bioactivity-BLI



Loaded Human PCSK9, Fc Tag (Cat. No. PC9-H5256) on Protein A Biosensor, can bind Human LDL R, His Tag (Cat. No. LDR-H5224) with an affinity constant of 12.7 nM as determined in BLI assay (ForteBio Octet Red96e) (Routinely tested).

Background

Low-Density Lipoprotein (LDL) Receptor is also known as LDLR, FH, FHC, LDLRQ2, and is a mosaic protein of ~840 amino acids (after removal of signal peptide) that mediates the endocytosis of cholesterol-rich LDL. It is a cell-surface receptor that recognizes the apoprotein B100 which is embedded in the phospholipid outer layer of LDL particles. The receptor also recognizes the apoE protein found in chylomicron remnants and VLDL remnants (IDL). It belongs to the Low density lipoprotein receptor gene family. LDL receptor complexes are present in clathrin-coated pits (or buds) on the cell surface, which when bound to LDL-cholesterol via adaptin, are pinched off to form clathrin-coated vesicles inside the cell. This allows LDL-cholesterol to be bound and internalized in a process known as endocytosis and prevents the LDL just diffusing around the membrane surface. This occurs in all nucleated cells (not erythrocytes), but mainly in the liver which removes ~70% of LDL from the circulation. Synthesis of receptors in the cell is regulated by the level of free intracellular cholesterol; if it is in excess for the needs of the cell then the transcription of the receptor gene will be inhibited. LDL receptors are translated by ribosomes on the endoplasmic reticulum and are modified by the Golgi apparatus before travelling in vesicles to the cell surface. LDL is directly involved in the development of atherosclerosis, due to accumulation of LDL-cholesterol in the blood. Atherosclerosis is the process responsible for the majority of cardiovascular diseases.

