



Synonym

ILT1,LIR7,CD85H,LIR-7,LILRA2,ILT1CD85H,CD85h,ILT1,ILT-1,ILT1CD85H,CD85h antigen,CD85 antigen-like family member H

Source

Biotinylated Human LILRA2, His,Avitag(LI2-H82E9) is expressed from human 293 cells (HEK293). It contains AA Gly 24 - Asn 449 (Accession # [Q8N149-1](#)). Predicted N-terminus: Gly 24

Molecular Characterization



This protein carries a polyhistidine tag at the C-terminus, followed by an Avi tag (Avitag™).

The protein has a calculated MW of 50.7 kDa. The protein migrates as 67-100 kDa under reducing (R) condition (SDS-PAGE) due to glycosylation.

Labeling

Biotinylation of this product is performed using Avitag™ technology. Briefly, the single lysine residue in the Avitag is enzymatically labeled with biotin.

Protein Ratio

Passed as determined by the HABA assay / binding ELISA.

Purity

>90% as determined by SDS-PAGE.

Formulation

Lyophilized from 0.22 µm filtered solution in PBS, pH7.4 with trehalose as protectant.

Contact us for customized product form or formulation.

Reconstitution

Please see Certificate of Analysis for specific instructions.

For best performance, we strongly recommend you to follow the reconstitution protocol provided in the CoA.

Storage

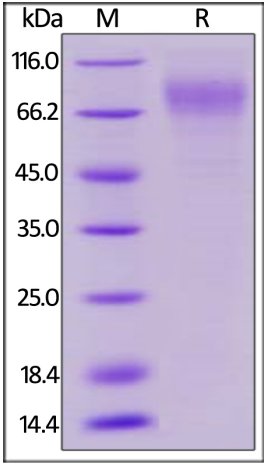
For long term storage, the product should be stored at lyophilized state at -20°C or lower.

Please avoid repeated freeze-thaw cycles.

This product is stable after storage at:

- -20°C to -70°C for 12 months in lyophilized state;
- -70°C for 3 months under sterile conditions after reconstitution.

SDS-PAGE



Biotinylated Human LILRA2, His,Avitag on SDS-PAGE under reducing (R) condition. The gel was stained with Coomassie Blue. The purity of the protein is greater than 90%.

Background

LILRA2 (Leukocyte immunoglobulin like receptor A2), also known as CD85H and LIR7 (Leukocyte immunoglobulin-like receptor 7). It belongs to the subfamily A class of LIR receptors (LILRAs), which are single-pass type I transmembrane proteins with 2-4 extracellular Ig-like domains, a transmembrane domain (TM), and a short cytoplasmic tail. LILRA2 contains 4 Ig-like C2 type domains in the extracellular region. LILRA2 does not bind class I MHC antigens. LILRA2 is expressed



Biotinylated Human LILRA2 / CD85h / ILT1 Protein, His,Avitag™

Catalog # LI2-H82E9



predominantly on monocytes and B cells, and at lower levels on dendritic cells and natural killer cells. LILRA2 is an activating receptor that inhibits dendritic cell differentiation and antigen presentation and suppresses innate immune response.

