

Synonym

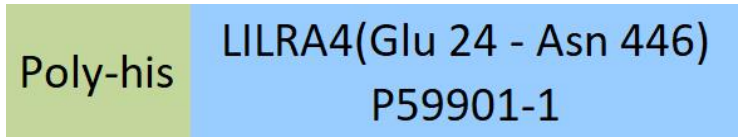
LILRA4,CD85g,ILT7,ILT-7

Source

Human LILRA4, His Tag(LI4-H5243) is expressed from human 293 cells (HEK293). It contains AA Glu 24 - Asn 446 (Accession # [P59901-1](#)).

Predicted N-terminus: His

Molecular Characterization



This protein carries a polyhistidine tag at the N-terminus.

The protein has a calculated MW of 48.5 kDa. The protein migrates as 60-65 kDa when calibrated against [Star Ribbon Pre-stained Protein Marker](#) under reducing (R) condition (SDS-PAGE) due to glycosylation.

Endotoxin

Less than 1.0 EU per µg by the LAL method / rFC method.

Purity

>95% as determined by SDS-PAGE.

>95% as determined by SEC-MALS.

Formulation

Lyophilized from 0.22 µm filtered solution in PBS, pH7.4 with trehalose as protectant.

Contact us for customized product form or formulation.

Reconstitution

Please see Certificate of Analysis for specific instructions.

*For best performance, we strongly recommend you to follow the reconstitution protocol provided in the CoA.*

Storage

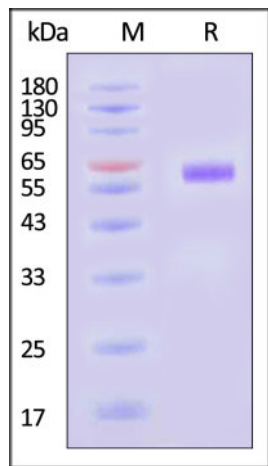
For long term storage, the product should be stored at lyophilized state at -20°C or lower.

*Please avoid repeated freeze-thaw cycles.*

This product is stable after storage at:

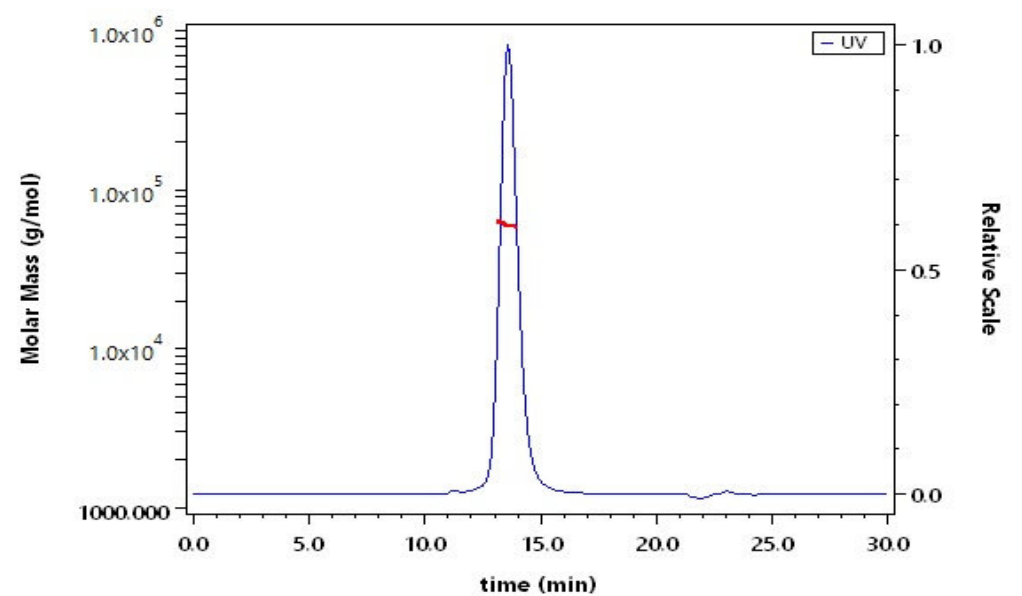
- -20°C to -70°C for 12 months in lyophilized state;
- -70°C for 3 months under sterile conditions after reconstitution.

SDS-PAGE



Human LILRA4, His Tag on SDS-PAGE under reducing (R) condition. The gel was stained with Coomassie Blue. The purity of the protein is greater than 95% (With [Star Ribbon Pre-stained Protein Marker](#)).

SEC-MALS



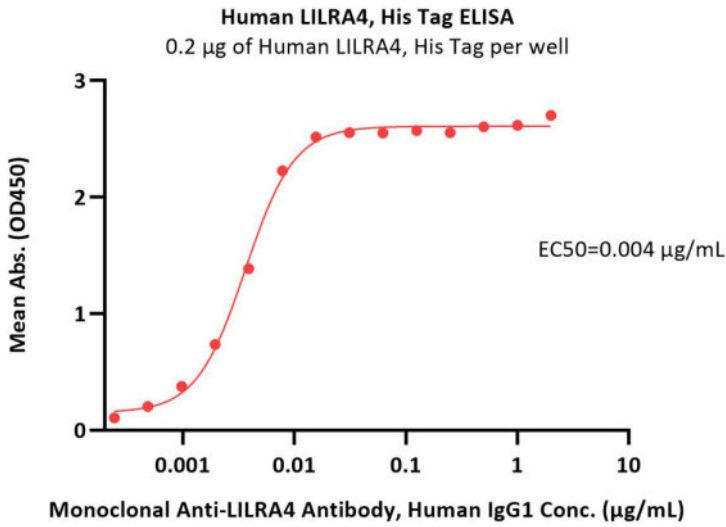
The purity of Human LILRA4, His Tag (Cat. No. LI4-H5243) is more than 95% and the molecular weight of this protein is around 55-74 kDa verified by SEC-MALS.

[Report](#)

Bioactivity-ELISA

Discounts, Gifts,  
and more!





Immobilized Human LILRA4, His Tag (Cat. No. LI4-H5243) at 2 µg/mL (100 µL/well) can bind Monoclonal Anti-LILRA4 Antibody, Human IgG1 with a linear range of 0.001-0.008 µg/mL (QC tested).

Background

Leukocyte immunoglobulin-like receptor subfamily A member 4 (LILRA4/ILT7/CD85g) is a marker of plasmacytoid dendritic cells (pDCs), which are reported to be a major source of the abnormally high levels of IFNα associated with autoimmune diseases. Targeting LILRA4 with therapeutic antibodies to promote killing of these IFNα-producing pDCs is being investigated as a novel approach to alleviating the symptoms of autoimmune diseases. LILRA4 is an immunoglobulin-like protein preferentially expressed on the surface of human plasmacytoid dendritic cells (pDCs). It interacts with bone marrow stromal cell antigen 2 to control the Toll-like receptor (TLR) driven response by pDCs to viral infection. It may also be involved in modulating pDC-tumour interactions. pDCs are a source of the excess IFNα which drives autoimmune disease symptoms.

