

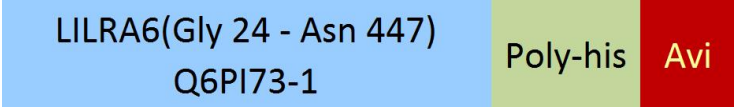
Synonym

LILRA6,CD85b,ILT8,ILT-8

Source

Biotinylated Human LILRA6, His,Avitag(LI6-H82E2) is expressed from human 293 cells (HEK293). It contains AA Gly 24 - Asn 447 (Accession # [Q6PI73-1](#)). Predicted N-terminus: Gly 24

Molecular Characterization



This protein carries a polyhistidine tag at the C-terminus, followed by an Avi tag (Avitag™).

The protein has a calculated MW of 50.0 kDa. The protein migrates as 56-66 kDa under reducing (R) condition (SDS-PAGE) due to glycosylation.

Labeling

Biotinylation of this product is performed using Avitag™ technology. Briefly, the single lysine residue in the Avitag is enzymatically labeled with biotin.

Protein Ratio

Passed as determined by the HABA assay / binding ELISA.

Purity

>95% as determined by SDS-PAGE.

Formulation

Lyophilized from 0.22 µm filtered solution in PBS, pH7.4 with trehalose as protectant.

Contact us for customized product form or formulation.

Reconstitution

Please see Certificate of Analysis for specific instructions.

For best performance, we strongly recommend you to follow the reconstitution protocol provided in the CoA.

Storage

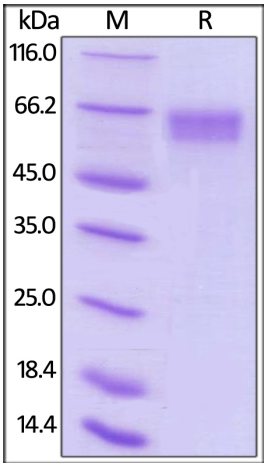
For long term storage, the product should be stored at lyophilized state at -20°C or lower.

Please avoid repeated freeze-thaw cycles.

This product is stable after storage at:

- -20°C to -70°C for 12 months in lyophilized state;
- -70°C for 3 months under sterile conditions after reconstitution.

SDS-PAGE



Biotinylated Human LILRA6, His,Avitag on SDS-PAGE under reducing (R) condition. The gel was stained with Coomassie Blue. The purity of the protein is greater than 95%.

Background

The LILRs are a family of receptors that regulate the activities of myelomonocytic cells. LILRB3 and LILRA6 represent a pair of inhibitory/activating receptors with identical extracellular domains and unknown ligands. LILRB3 (ILT5) and LILRA6 (ILT8) are highly polymorphic receptors with similar extracellular domains. LILRA6 can signal through association with an activating adaptor molecule, FcRγ, which bears a cytoplasmic tail with an immunoreceptor tyrosine-based activation



Biotinylated Human LILRA6 / CD85b / ILT8 Protein, His,Avitag™

Catalog # LI6-H82E2



motif. Analysis of mRNA expression in the major fractions of PBMCs showed that LILRA6 is primarily expressed in monocytes, and its expression level correlates with copy number of the gene.

