

Synonym

GARP, Garpin, D11S833E

Source

Human LRRC32, Fc Tag (LR2-H5256) is expressed from human 293 cells (HEK293). It contains AA His 20 - Asn 627 (Accession # [Q14392-1](#)).  
Predicted N-terminus: His 20

Molecular Characterization

LRRC32(His 20 - Asn 627) Q14392-1	Fc(Pro 100 - Lys 330) P01857
--------------------------------------	---------------------------------

[Other Tags and Version](#) [Biotin & Other Labeled Version](#)

This protein carries a human IgG1 Fc tag at the C-terminus.  
The protein has a calculated MW of 92.4 kDa. The protein migrates as 105 kDa under reducing (R) condition (SDS-PAGE) due to glycosylation.

Endotoxin

Less than 1.0 EU per µg by the LAL method / rFC method.

Purity

>95% as determined by SDS-PAGE.

Formulation

Lyophilized from 0.22 µm filtered solution in Tris with Glycine, Arginine and NaCl, pH7.5 with trehalose as protectant.  
Contact us for customized product form or formulation.

Reconstitution

Please see Certificate of Analysis for specific instructions.  
**For best performance, we strongly recommend you to follow the reconstitution protocol provided in the CoA.**

Storage

For long term storage, the product should be stored at lyophilized state at -20°C or lower.

**Please avoid repeated freeze-thaw cycles.**

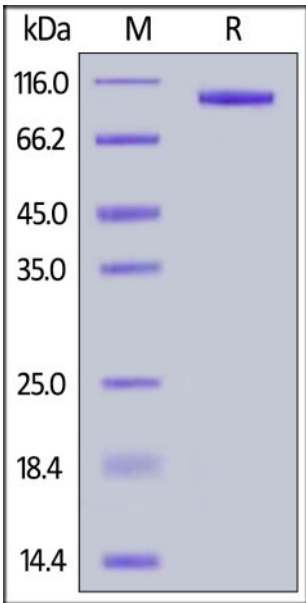
This product is stable after storage at:

- -20°C to -70°C for 12 months in lyophilized state;
- -70°C for 3 months under sterile conditions after reconstitution.

ACRO Quality Management System

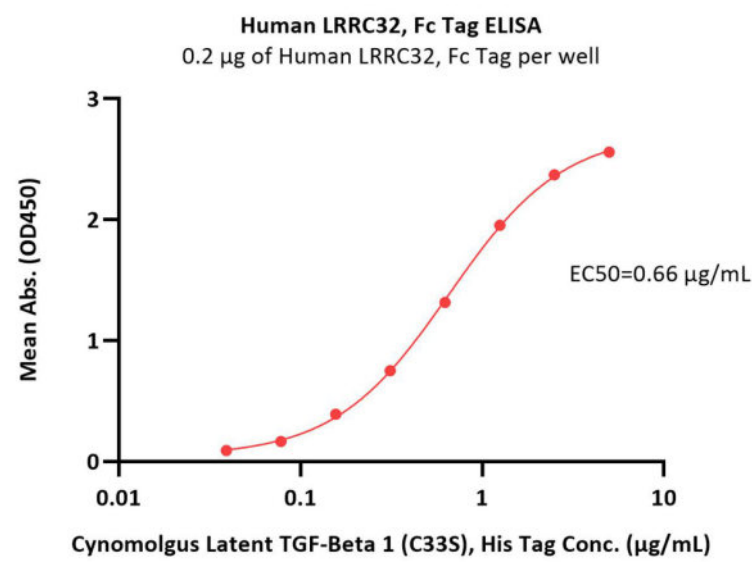
- [QMS\(ISO, GMP\)](#).
- [Quality Advantages](#)
- [Quality Control Process](#)

SDS-PAGE



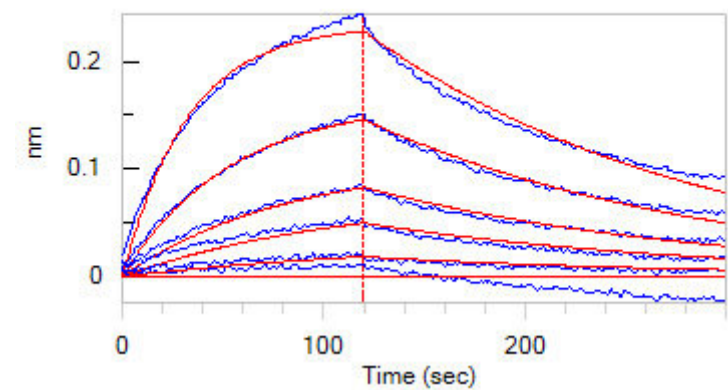
Human LRRC32, Fc Tag on SDS-PAGE under reducing (R) condition. The gel was stained with Coomassie Blue. The purity of the protein is greater than 95%.

## Bioactivity-ELISA



Immobilized Human LRRC32, Fc Tag (Cat. No. LR2-H5256) at 2 µg/mL (100 µL/well) can bind Cynomolgus Latent TGF-Beta 1 (C33S), His Tag (Cat. No. TG1-C5243) with a linear range of 0.039-1.25 µg/mL (Routinely tested).

## Bioactivity-BLI



Loaded Human LRRC32, Fc Tag (Cat. No. LR2-H5256) on AHC Biosensor, can bind Human TGFB1, His Tag (Cat. No. TG1-H524x) with an affinity constant of 0.239 µM as determined in BLI assay (ForteBio Octet Red96e) (QC tested).

## Background

Leucine-rich repeat protein 32 (LRRC32), also known as GARP (glycoprotein A repetitions predominant). LRRC32 expression promotes the acquisition of a Treg phenotype including reduced cellular proliferation, reduced cytokine secretion, and the capacity to suppress the proliferation of naïve T cells. LRRC32 binds directly to the TGF-beta latency associated peptide (LAP) and tethers latent TGF-beta on the surface of activated Treg cells. The presentation of TGF-beta on Tregs contributes to their ability to suppress naïve T cell proliferation.

Discounts, Gifts,  
and more!





[www.acrobiosystems.com](http://www.acrobiosystems.com)