



**Synonym**

Leucine-rich repeat-containing protein 15, LRRC15, LIB, hLib

**Source**

Biotinylated Cynomolgus / Rhesus macaque LRRC15, His,Avitag (LR5-C82E7) is expressed from human 293 cells (HEK293). It contains AA Tyr 22 - Gly 538 (Accession # [A0A2K5UKB6-1](#)).

**Molecular Characterization**

LRRC15(Tyr 22 - Gly 538)  
A0A2K5UKB6-1

Poly-his

Avi

[Other Tags and Version](#) [Biotin & Other Labeled Version](#)

This protein carries a polyhistidine tag at the C-terminus, followed by an Avi tag (Avitag™).  
The protein has a calculated MW of 61.6 kDa. The protein migrates as 70-90 kDa under reducing (R) condition (SDS-PAGE) due to glycosylation.

**Labeling**

**Biotinylation of this product is performed using Avitag™ technology. Briefly, the single lysine residue in the Avitag is enzymatically labeled with biotin.**

**Protein Ratio**

Passed as determined by the HABA assay / binding ELISA.

**Purity**

>95% as determined by SDS-PAGE.

**Formulation**

Lyophilized from 0.22 µm filtered solution in PBS, pH7.4 with trehalose as protectant.  
Contact us for customized product form or formulation.

**Reconstitution**

Please see Certificate of Analysis for specific instructions.  
**For best performance, we strongly recommend you to follow the reconstitution protocol provided in the CoA.**

**Storage**

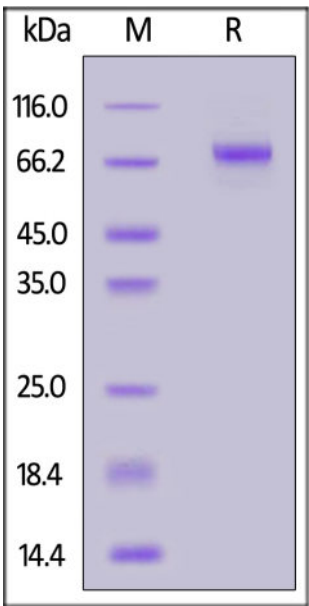
For long term storage, the product should be stored at lyophilized state at -20°C or lower.  
**Please avoid repeated freeze-thaw cycles.**  
This product is stable after storage at:

- -20°C to -70°C for 12 months in lyophilized state;
- -70°C for 3 months under sterile conditions after reconstitution.

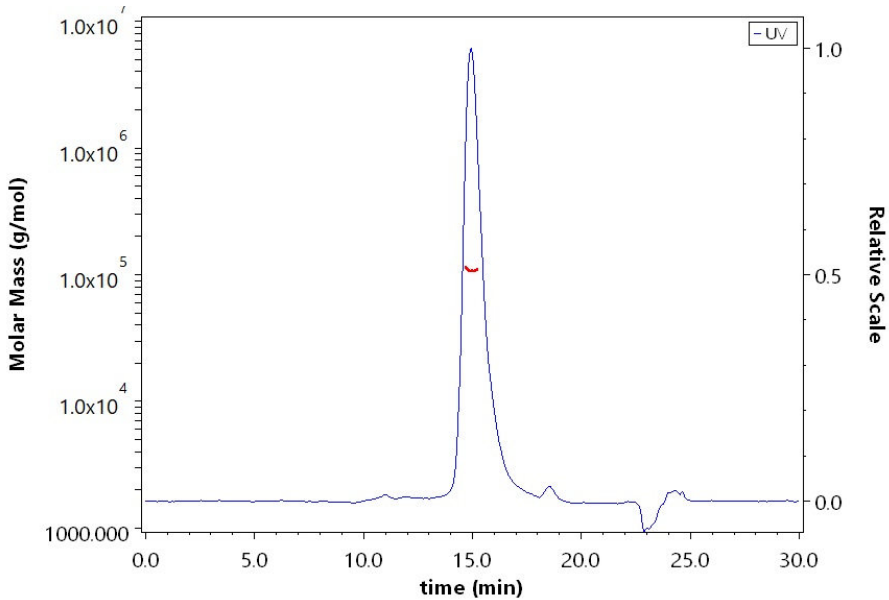
**ACRO Quality Management System**

- [QMS\(ISO, GMP\)](#)
- [Quality Advantages](#)
- [Quality Control Process](#)

**SDS-PAGE**



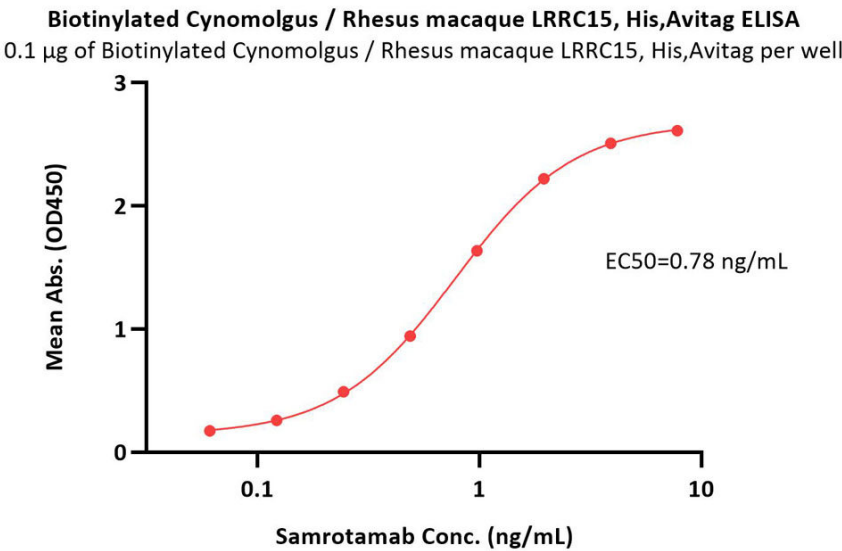
**SEC-MALS**



Biotinylated Cynomolgus / Rhesus macaque LRRC15, His,Avitag on SDS-PAGE under reducing (R) condition. The gel was stained with Coomassie Blue. The purity of the protein is greater than 95%.

The purity of Biotinylated Cynomolgus / Rhesus macaque LRRC15, His,Avitag (Cat. No. LR5-C82E7) is more than 85% and the molecular weight of this protein is around 80-115 kDa verified by SEC-MALS.

Bioactivity-ELISA



Immobilized Biotinylated Cynomolgus / Rhesus macaque LRRC15, His,Avitag (Cat. No. LR5-C82E7) at 1 µg/mL (100 µL/well) on streptavidin (Cat. No. STN-N5116) precoated (0.5 µg/well) plate can bind Samrotamab with a linear range of 0.1-2 ng/mL (QC tested).

Background

LRRC15 (Leucine-rich repeat-containing protein 15) is also known as LIB and hLib. LRRC15 is highly expressed in a variety of solid tumors. LRRC15 was expressed on stromal fibroblasts in many solid tumors (e.g., breast, head and neck, lung, pancreatic) as well as directly on a subset of cancer cells of mesenchymal origin (e.g., sarcoma, melanoma, glioblastoma). LRRC15 expression was induced by TGFβ on activated fibroblasts (αSMA+) and on mesenchymal stem cells. These collective findings suggested LRRC15 as a novel CAF and mesenchymal marker with utility as a therapeutic target for the treatment of cancers with LRRC15-positive stromal desmoplasia or cancers of mesenchymal origin. ABBV-085 is a monomethyl auristatin E (MMAE)-containing antibody–drug conjugate (ADC) directed against LRRC15, and it demonstrated robust preclinical efficacy against LRRC15 stromal-positive/cancer-negative, and LRRC15 cancer-positive models as a monotherapy, or in combination with standard-of-care therapies.

Discounts, Gifts,  
and more!



Acro



[www.acrobiosystems.com](http://www.acrobiosystems.com)