

Synonym

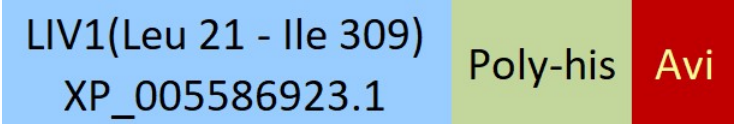
SLC39A6,LIV-1,ZIP6,Zinc transporter ZIP6,ZIP-6

Source

Biotinylated Cynomolgus LIV-1, His,Avitag(LV1-C82E5) is expressed from human 293 cells (HEK293). It contains AA Leu 21 - Ile 309 (Accession # [XP\\_005586923.1](#)).

Predicted N-terminus: Leu 21

Molecular Characterization



This protein carries a polyhistidine tag at the C-terminus, followed by an Avi tag (Avitag™).

The protein has a calculated MW of 36.2 kDa. The protein migrates as 50-65 kDa under reducing (R) condition (SDS-PAGE) due to glycosylation.

Labeling

*Biotinylation of this product is performed using Avitag™ technology. Briefly, the single lysine residue in the Avitag is enzymatically labeled with biotin.*

Protein Ratio

Passed as determined by the HABA assay / binding ELISA.

Purity

>90% as determined by SDS-PAGE.

Formulation

Lyophilized from 0.22 µm filtered solution in PBS, pH7.4 with trehalose as protectant.

Contact us for customized product form or formulation.

Reconstitution

Please see Certificate of Analysis for specific instructions.

*For best performance, we strongly recommend you to follow the reconstitution protocol provided in the CoA.*

Storage

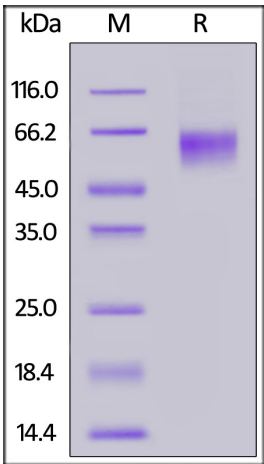
For long term storage, the product should be stored at lyophilized state at -20°C or lower.

*Please avoid repeated freeze-thaw cycles.*

This product is stable after storage at:

- 20°C to -70°C for 12 months in lyophilized state;
- 70°C for 3 months under sterile conditions after reconstitution.

SDS-PAGE

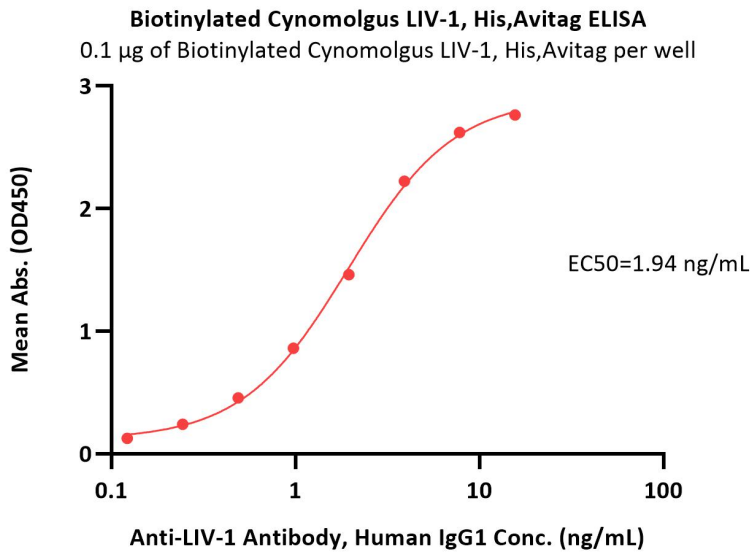


Biotinylated Cynomolgus LIV-1, His,Avitag on SDS-PAGE under reducing (R) condition. The gel was stained with Coomassie Blue. The purity of the protein is greater than 90%.

Bioactivity-ELISA

Discounts, Gifts,  
and more!





Immobilized Biotinylated Cynomolgus LIV-1, His,Avitag (Cat. No. LV1-C82E5) at 1 µg/mL (100 µL/well) on streptavidin (Cat. No. STN-N5116) precoated (0.5 µg/well) plate can bind Anti-LIV-1 Antibody, Human IgG1 with a linear range of 0.1-4 ng/mL (QC tested).

Background

LIV-1 is also known as SLC39A6, ZIP-6 and Zinc transporter ZIP6. May act as a zinc-influx transporter. Highly expressed in the breast, prostate, placenta, kidney, pituitary and corpus callosum. Weakly expressed in heart and intestine. Also highly expressed in cells derived from an adenocarcinoma of the cervix and lung carcinoma. Up-regulated by estrogen in breast cancer cells lines.

