

Synonym

lymphocyte antigen 6 family member G6D,C6orf23,G6D,LY6-D,MEGT1,NG25

Source

Human LY6G6D Protein, Fc Tag(LYD-H5265) is expressed from human 293 cells (HEK293). It contains AA Asn 20 - Ser 104 (Accession # [O95868-1](#)).

Molecular Characterization

Fc(Pro 100 - Lys 330) P01857	LY6G6D(Asn 20 - Ser 104) O95868-1
---------------------------------	--------------------------------------

This protein carries a human IgG1 Fc tag at the N-terminus.

The protein has a calculated MW of 35.7 kDa. The protein migrates as 38-43 kDa when calibrated against [Star Ribbon Pre-stained Protein Marker](#) under reducing (R) condition (SDS-PAGE) due to glycosylation.

Endotoxin

Less than 0.1 EU per µg by the LAL method / rFC method.

Purity

>90% as determined by SDS-PAGE.

>90% as determined by SEC-MALS.

Formulation

Lyophilized from 0.22 µm filtered solution in 50 mM Tris, 100 mM Glycine, 25 mM Arginine, 150 mM NaCl, pH7.5 with trehalose as protectant.

Contact us for customized product form or formulation.

Reconstitution

Please see Certificate of Analysis for specific instructions.

For best performance, we strongly recommend you to follow the reconstitution protocol provided in the CoA.

Storage

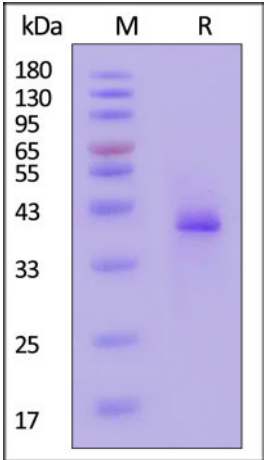
For long term storage, the product should be stored at lyophilized state at -20°C or lower.

Please avoid repeated freeze-thaw cycles.

This product is stable after storage at:

- 20°C to -70°C for 12 months in lyophilized state;
- 70°C for 3 months under sterile conditions after reconstitution.

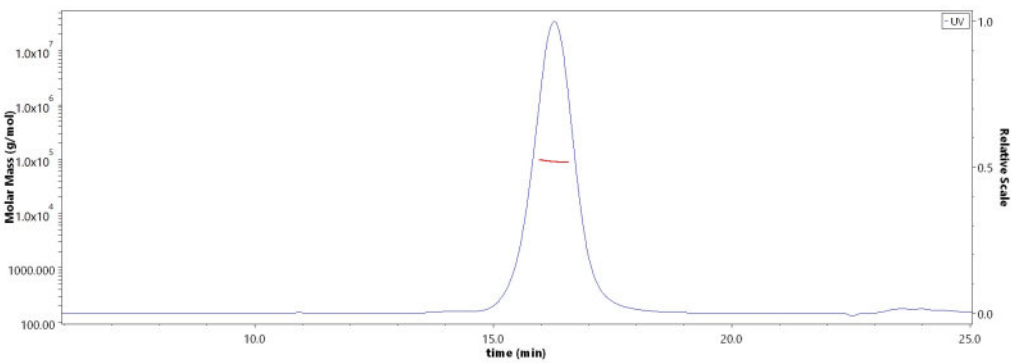
SDS-PAGE



Human LY6G6D Protein, Fc Tag on SDS-PAGE under reducing (R) condition. The gel was stained with Coomassie Blue. The purity of the protein is greater than 90% (With [Star Ribbon Pre-stained Protein Marker](#)).

Bioactivity-ELISA

SEC-MALS



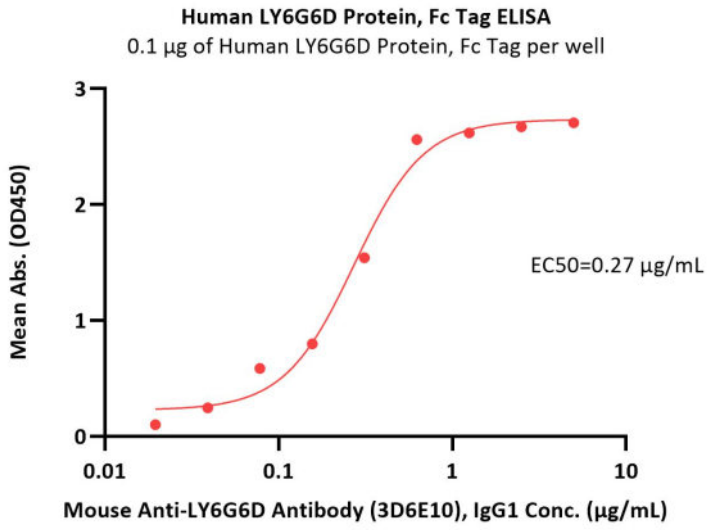
The purity of Human LY6G6D Protein, Fc Tag (Cat. No. LYD-H5265) is more than 90% and the molecular weight of this protein is around 80-95 kDa verified by SEC-MALS.

[Report](#)



Human LY6G6D Protein, Fc Tag (MALS verified)

Catalog # LYD-H5265



Immobilized Human LY6G6D Protein, Fc Tag (Cat. No. LYD-H5265) at 1 µg/mL (100 µL/well) can bind Mouse Anti-LY6G6D Antibody (3D6E10), IgG1 with a linear range of 0.02-0.625 µg/mL (QC tested).

Background

LY6G6D belongs to a cluster of leukocyte antigen-6 (LY6) genes located in the major histocompatibility complex (MHC) class III region on chromosome 6. Members of the LY6 superfamily typically contain 70 to 80 amino acids, including 8 to 10 cysteines. Most LY6 proteins are attached to the cell surface by a glycosylphosphatidylinositol (GPI) anchor that is directly involved in signal transduction.

