

Synonym

MIC-A

Source

Human MICA (24-309) Protein, Fc Tag(MIA-H5254) is expressed from human 293 cells (HEK293). It contains AA Glu 24 - Thr 309 (Accession # [Q29983-1](#)). Predicted N-terminus: Glu 24

Molecular Characterization

MICA(Glu 24 - Thr 309) Q29983-1	Fc(Pro 100 - Lys 330) P01857
------------------------------------	---------------------------------

This protein carries a human IgG1 Fc tag at the C-terminus.

The protein has a calculated MW of 59.4 kDa. The protein migrates as 80-95 kDa when calibrated against [Star Ribbon Pre-stained Protein Marker](#) under reducing (R) condition (SDS-PAGE) due to glycosylation.

Endotoxin

Less than 1.0 EU per µg by the LAL method / rFC method.

Purity

>90% as determined by SDS-PAGE.

Formulation

Lyophilized from 0.22 µm filtered solution in 50 mM Tris, 100 mM Glycine, 25 mM Arginine, 150 mM NaCl, pH7.5 with trehalose as protectant.

Contact us for customized product form or formulation.

Reconstitution

Please see Certificate of Analysis for specific instructions.

For best performance, we strongly recommend you to follow the reconstitution protocol provided in the CoA.

Storage

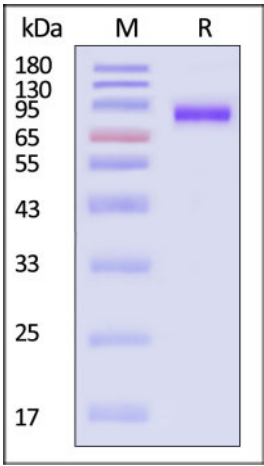
For long term storage, the product should be stored at lyophilized state at -20°C or lower.

Please avoid repeated freeze-thaw cycles.

This product is stable after storage at:

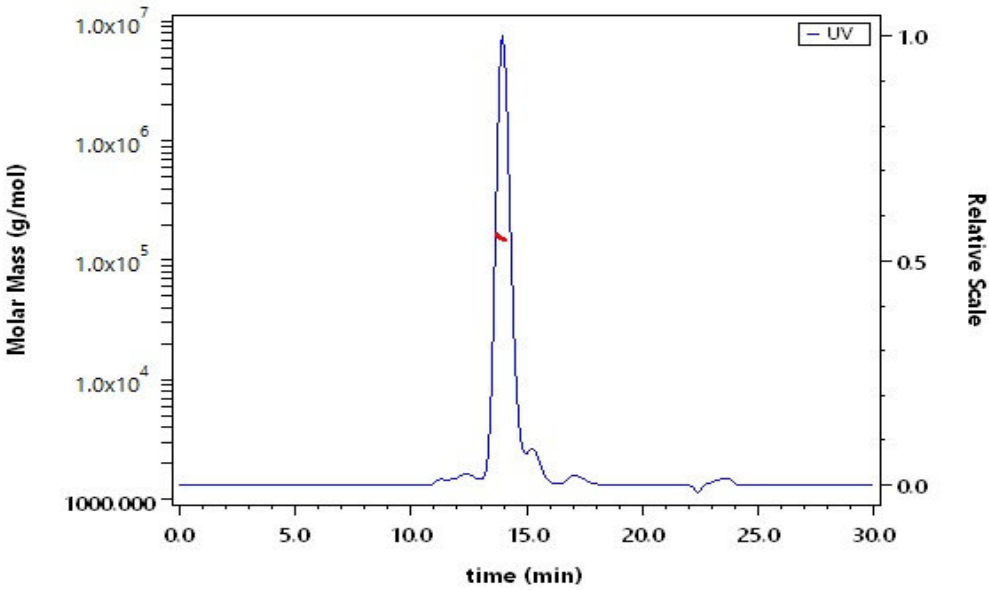
- 20°C to -70°C for 12 months in lyophilized state;
- 70°C for 3 months under sterile conditions after reconstitution.

SDS-PAGE



Human MICA (24-309) Protein, Fc Tag on SDS-PAGE under reducing (R) condition. The gel was stained with Coomassie Blue. The purity of the protein is greater than 90% (With [Star Ribbon Pre-stained Protein Marker](#)).

SEC-MALS



The purity of Human MICA (24-309) Protein, Fc Tag (Cat. No. MIA-H5254) is more than 85% and the molecular weight of this protein is around 140-165 kDa verified by SEC-MALS.

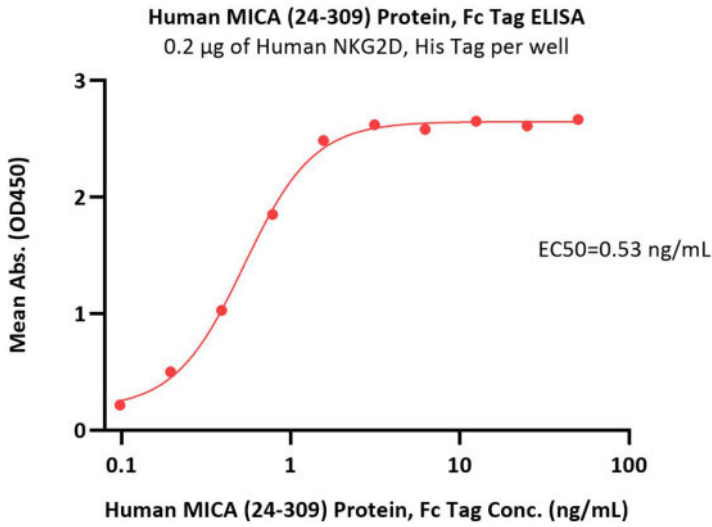
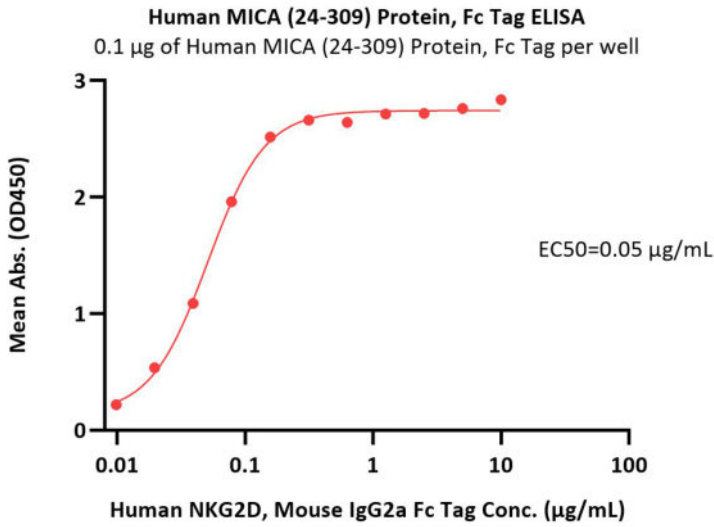
[Report](#)

Bioactivity-ELISA



Human MICA (24-309) Protein, Fc Tag (MALS verified)

Catalog # MIA-H5254



Immobilized Human MICA (24-309) Protein, Fc Tag (Cat. No. MIA-H5254) at 1 µg/mL (100 µL/well) can bind Human NKG2D, Mouse IgG2a Fc Tag (Cat. No. NKD-H5259) with a linear range of 0.01-0.156 µg/mL (QC tested).

Immobilized Human NKG2D, His Tag (Cat. No. NKD-H5245) at 2 µg/mL (100 µL/well) can bind Human MICA (24-309) Protein, Fc Tag (Cat. No. MIA-H5254) with a linear range of 0.1-2 ng/mL (Routinely tested).

Background

MHC class I polypeptide-related sequence A (MICA) belongs to the MHC class I family and MIC subfamily. MICA contains one Ig-like C1-type (immunoglobulin-like) domain. Unlike classical MHC class I molecules, MICA does not form a heterodimer with beta-2-microglobulin. MICA acts as a stress-induced self-antigen that is recognized by gamma delta T-cells. MICA is ligand for the KLRK1/NKG2D receptor. MICA bind to KLRK1 leads to cell lysis.

