

Human MICA (24-202) Protein, His Tag (MALS verified)

Catalog # MIA-H52H7



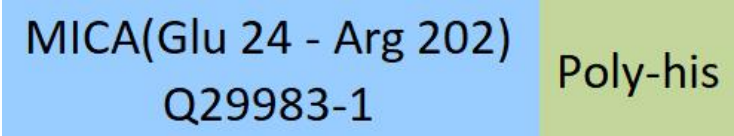
Synonym

MIC-A

Source

Human MICA (24-202) Protein, His Tag(MIA-H52H7) is expressed from human 293 cells (HEK293). It contains AA Glu 24 - Arg 202 (Accession # [Q29983-1](#)). Predicted N-terminus: Glu 24

Molecular Characterization



This protein carries a polyhistidine tag at the C-terminus.
The protein has a calculated MW of 22.8 kDa. The protein migrates as 31-38 kDa when calibrated against [Star Ribbon Pre-stained Protein Marker](#) under reducing (R) condition (SDS-PAGE) due to glycosylation.

Endotoxin

Less than 1.0 EU per µg by the LAL method / rFC method.

Purity

>90% as determined by SDS-PAGE.

Formulation

Lyophilized from 0.22 µm filtered solution in PBS, pH7.4 with trehalose as protectant.

Contact us for customized product form or formulation.

Reconstitution

Please see Certificate of Analysis for specific instructions.

For best performance, we strongly recommend you to follow the reconstitution protocol provided in the CoA.

Storage

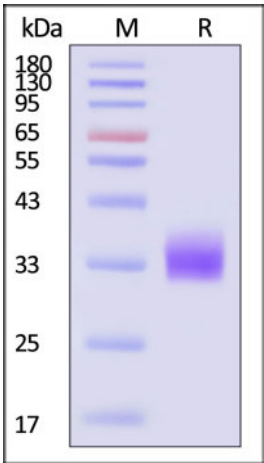
For long term storage, the product should be stored at lyophilized state at -20°C or lower.

Please avoid repeated freeze-thaw cycles.

This product is stable after storage at:

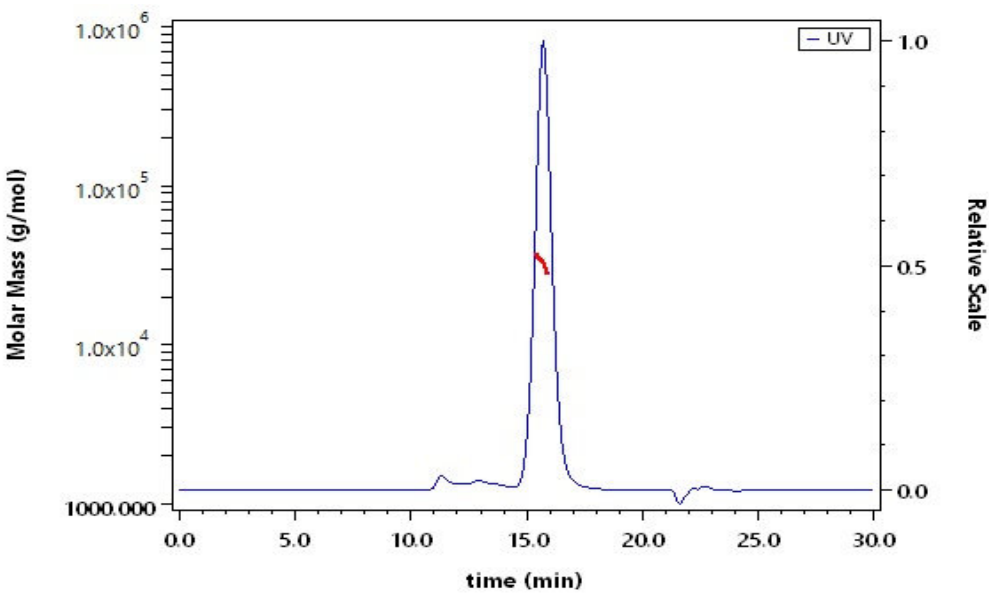
- 20°C to -70°C for 12 months in lyophilized state;
- 70°C for 3 months under sterile conditions after reconstitution.

SDS-PAGE



Human MICA (24-202) Protein, His Tag on SDS-PAGE under reducing (R) condition. The gel was stained with Coomassie Blue. The purity of the protein is greater than 90% (With [Star Ribbon Pre-stained Protein Marker](#)).

SEC-MALS



The purity of Human MICA (24-202) Protein, His Tag (Cat. No. MIA-H52H7) is more than 85% and the molecular weight of this protein is around 27-37 kDa verified by SEC-MALS.

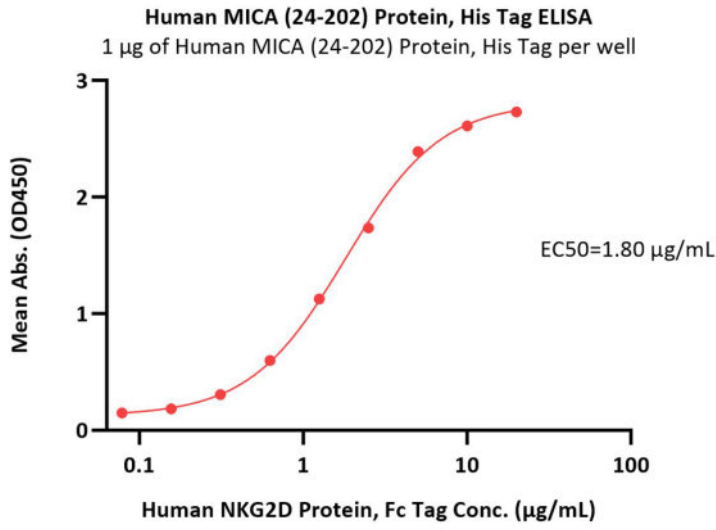
[Report](#)

Bioactivity-ELISA



Human MICA (24-202) Protein, His Tag (MALS verified)

Catalog # MIA-H52H7



Immobilized Human MICA (24-202) Protein, His Tag (Cat. No. MIA-H52H7) at 10 µg/mL (100 µL/well) can bind Human NKG2D Protein, Fc Tag (Cat. No. NKD-H5265) with a linear range of 0.078-2.5 µg/mL (QC tested).

Background

MHC class I polypeptide-related sequence A (MICA) belongs to the MHC class I family and MIC subfamily. MICA contains one Ig-like C1-type (immunoglobulin-like) domain. Unlike classical MHC class I molecules, MICA does not form a heterodimer with beta-2-microglobulin. MICA acts as a stress-induced self-antigen that is recognized by gamma delta T-cells. MICA is ligand for the KLRK1/NKG2D receptor. MICA bind to KLRK1 leads to cell lysis.

