

Synonym

MME,CALLA,CD10,DKFZp686O16152,MGC126681,MGC126707,NEP,SFE, Neprilysin

Source

Human Neprilysin, Fc Tag(MME-H526a) is expressed from human 293 cells (HEK293). It contains AA Tyr 52 - Trp 750 (Accession # [NP_000893.2](#)).

Molecular Characterization

Fc(Thr 106 - Lys 330) P01857	Neprilysin(Tyr 52 - Trp 750) NP_000893.2
---------------------------------	---

This protein carries a human IgG1 Fc tag at the N-terminus.

The protein has a calculated MW of 106.8 kDa. The protein migrates as 120 kDa when calibrated against [Star Ribbon Pre-stained Protein Marker](#) under reducing (R) condition (SDS-PAGE) due to glycosylation.

Endotoxin

Less than 1.0 EU per µg by the LAL method / rFC method.

Purity

>95% as determined by SDS-PAGE.

Formulation

Lyophilized from 0.22 µm filtered solution in 50 mM Tris, 100 mM Glycine, 25 mM Arginine, 150 mM NaCl, pH7.5 with trehalose as protectant.

Contact us for customized product form or formulation.

Reconstitution

Please see Certificate of Analysis for specific instructions.

For best performance, we strongly recommend you to follow the reconstitution protocol provided in the CoA.

Storage

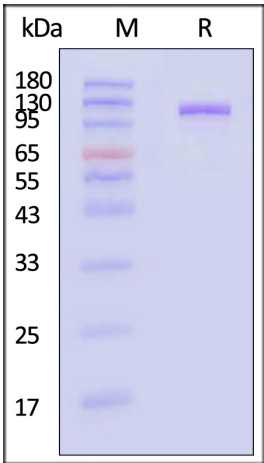
For long term storage, the product should be stored at lyophilized state at -20°C or lower.

Please avoid repeated freeze-thaw cycles.

This product is stable after storage at:

- 20°C to -70°C for 12 months in lyophilized state;
- 70°C for 3 months under sterile conditions after reconstitution.

SDS-PAGE



Human Neprilysin, Fc Tag on SDS-PAGE under reducing (R) condition. The gel was stained with Coomassie Blue. The purity of the protein is greater than 95% (With [Star Ribbon Pre-stained Protein Marker](#)).

Background

Cluster of differentiation 10 (CD10) is also known as membrane metallo-endopeptidase, neutral endopeptidase (NEP), Neprilysin, and common acute lymphoblastic leukemia antigen (CALLA), is a 90-110-kDa type II transmembrane glycoprotein normally expressed by a variety of tissues, including epithelial cells of the prostate, kidney, intestine, endometrium, adrenal glands, and lung. This zinc-dependent metalloprotease enzyme cleaves peptide bonds on the amino side of hydrophobic residues and inactivates a variety of physiologically active secreted peptides. CD20 is thought to be the rate-limiting degrading enzyme of amyloid β peptide (Aβ)



Human Neprilysin / MME / CD10 Protein, Fc Tag

Catalog # MME-H526a



whose abnormal misfolding and aggregation in neural tissue has been implicated in the development of Alzheimer's disease (AD). CD10 is also identified as the common acute lymphoblastic leukemia antigen (CALLA) present on leukemic cells of pre-B phenotype, and thus serves as the most important biomarker in the diagnosis of human acute lymphocytic leukemia (ALL).

Discounts, Gifts,
and more!

