



Synonym

NCR1,LY94,CD335,NK-p46,hNKp46

Source

Human NKp46, Llama IgG2b Fc Tag(NC1-H5255) is expressed from human 293 cells (HEK293). It contains AA Gln 22 - Asn 254 (Accession # [O76036-6](#)). Predicted N-terminus: Gln 22

Molecular Characterization

NKp46(Gln 22 - Asn 254) O76036-6	LlamaFc(Glu 1 - Ser 243) AAX73259.1
-------------------------------------	--

This protein carries a llama IgG2b Fc tag at the C-terminus.  
The protein has a calculated MW of 54.2 kDa. The protein migrates as 60-70 kDa under reducing (R) condition (SDS-PAGE) due to glycosylation.

Endotoxin

Less than 0.01 EU per µg by the LAL method / rFC method.

Purity

>95% as determined by SDS-PAGE.

Formulation

Lyophilized from 0.22 µm filtered solution in Tris with Glycine, Arginine and NaCl, pH7.5 with trehalose as protectant.

Contact us for customized product form or formulation.

Reconstitution

Please see Certificate of Analysis for specific instructions.  
*For best performance, we strongly recommend you to follow the reconstitution protocol provided in the CoA.*

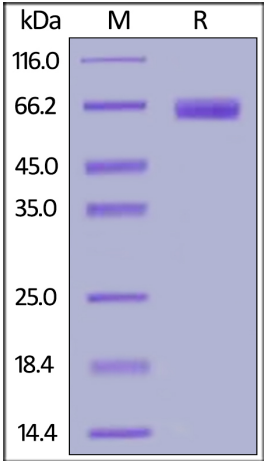
Storage

For long term storage, the product should be stored at lyophilized state at -20°C or lower.

*Please avoid repeated freeze-thaw cycles.*

- This product is stable after storage at:
- 20°C to -70°C for 12 months in lyophilized state;
  - 70°C for 3 months under sterile conditions after reconstitution.

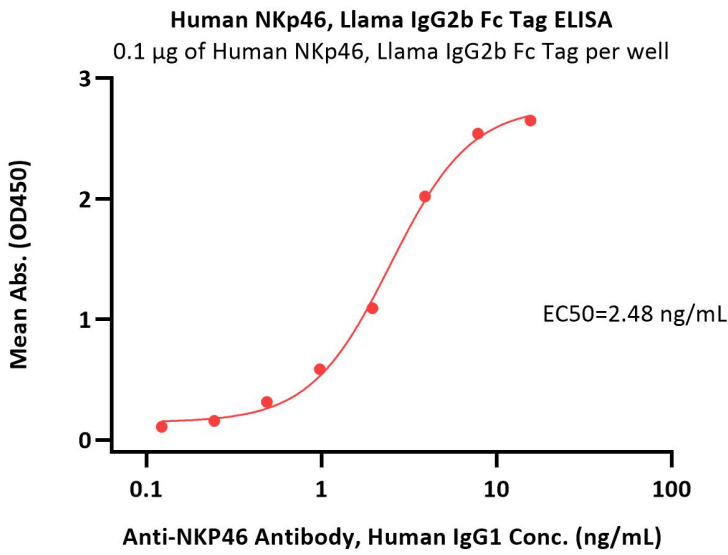
SDS-PAGE



Human NKp46, Llama IgG2b Fc Tag on SDS-PAGE under reducing (R) condition. The gel was stained with Coomassie Blue. The purity of the protein is greater than 95%.

Bioactivity-ELISA





Immobilized Human NKp46, Llama IgG2b Fc Tag (Cat. No. NC1-H5255) at 1 µg/mL (100 µL/well) can bind Anti-NKP46 Antibody, Human IgG1 with a linear range of 0.1-4 ng/mL (QC tested).

Background

Natural cytotoxicity triggering receptor 1 (NCR1) is also known as Natural killer cell p46-related protein (NK-p46), Lymphocyte antigen 94 homolog (LY94), CD antigen CD335, which belongs to the natural cytotoxicity receptor (NCR) family. NCR1 contains two Ig-like (immunoglobulin-like) domains. NCR1 interacts with CD247 and FCER1G. NCR1 / CD335 may contribute to the increased efficiency of activated natural killer (NK) cells to mediate tumor cell lysis.

