

Synonym

PDL2,PD-L2,Butyrophilin B7-DC,CD273,PDCD1 ligand 2,PDCD1L2,PDCD1LG2

Source

Mouse PD-L2, His Tag(PD2-M52E3) is expressed from human 293 cells (HEK293). It contains AA Leu 20 - Arg 219 (Accession # [NP\\_067371](#)).  
Predicted N-terminus: Leu 20

Molecular Characterization

PD-L2(Leu 20 - Arg 219)  
NP\_067371

Poly-his

This protein carries a polyhistidine tag at the C-terminus.  
The protein has a calculated MW of 24.4 kDa. The protein migrates as 37-45 kDa under reducing (R) condition (SDS-PAGE) due to glycosylation.

Endotoxin

Less than 1.0 EU per µg by the LAL method / rFC method.

Purity

>95% as determined by SDS-PAGE.  
>90% as determined by SEC-MALS.

Formulation

Lyophilized from 0.22 µm filtered solution in PBS, pH7.4 with trehalose as protectant.  
Contact us for customized product form or formulation.

Reconstitution

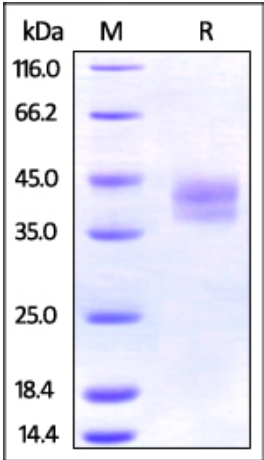
Please see Certificate of Analysis for specific instructions.  
*For best performance, we strongly recommend you to follow the reconstitution protocol provided in the CoA.*

Storage

For long term storage, the product should be stored at lyophilized state at -20°C or lower.  
*Please avoid repeated freeze-thaw cycles.*  
This product is stable after storage at:

- 20°C to -70°C for 12 months in lyophilized state;
- 70°C for 3 months under sterile conditions after reconstitution.

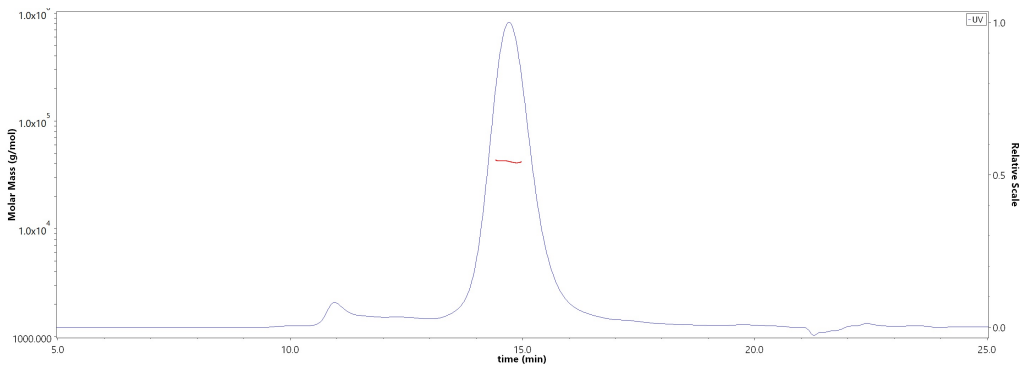
SDS-PAGE



Mouse PD-L2, His Tag on SDS-PAGE under reducing (R) condition. The gel was stained with Coomassie Blue. The purity of the protein is greater than 95%.

Bioactivity-ELISA

SEC-MALS

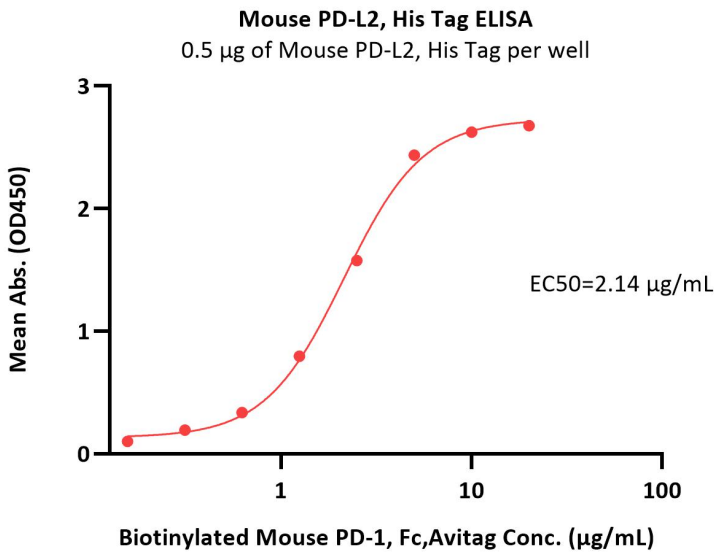
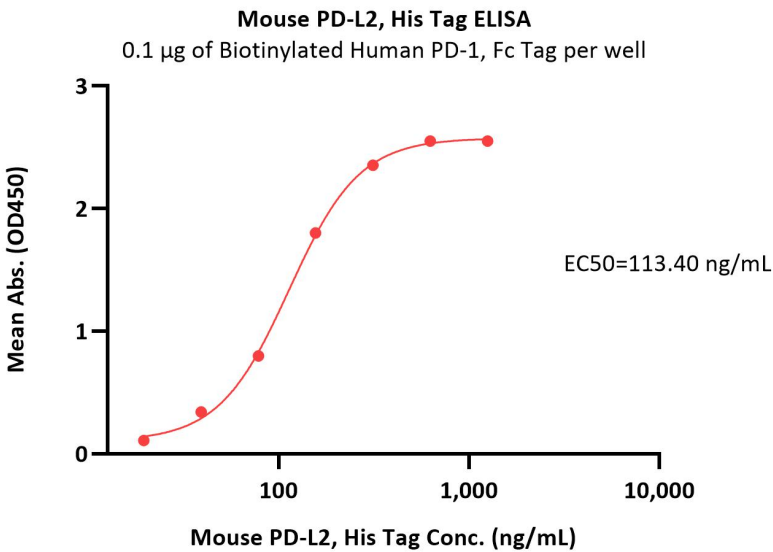


The purity of Mouse PD-L2, His Tag (Cat. No. PD2-M52E3) is more than 90% and the molecular weight of this protein is around 35-45 kDa verified by SEC-MALS.  
[Report](#)



Mouse PD-L2 / B7-DC Protein, His Tag (MALS verified)

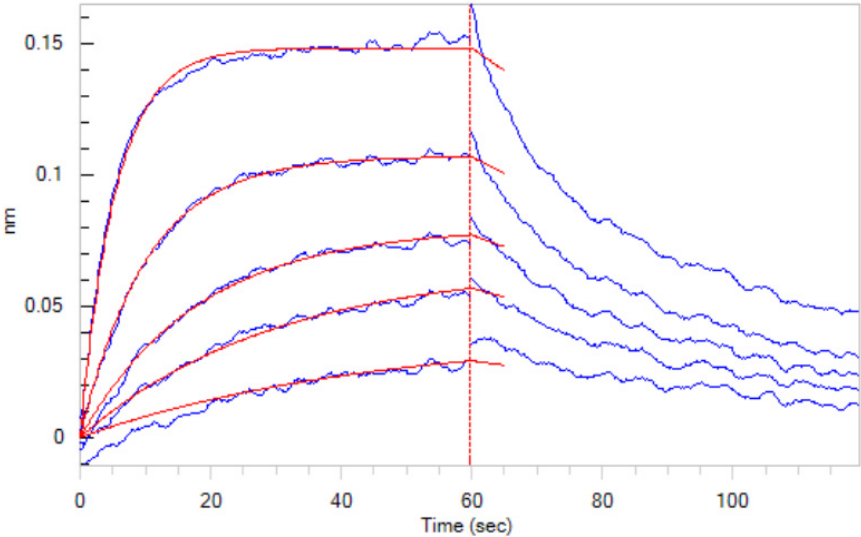
Catalog # PD2-M52E3



Immobilized Biotinylated Human PD-1, Fc Tag (Cat. No. PD1-H82F1) at 1 µg/mL (100 µL/well) on streptavidin precoated (0.2 µg/well) plate, can bind Mouse PD-L2, His Tag (Cat. No. PD2-M52E3) with a linear range of 20-156 ng/mL (QC tested).

Immobilized Mouse PD-L2, His Tag (Cat. No. PD2-M52E3) at 5 µg/mL (100 µL/well) can bind Biotinylated Mouse PD-1, Fc,Avitag (Cat. No. PD1-M82F4) with a linear range of 0.156-2.5 µg/mL (Routinely tested).

Bioactivity-BLI



Loaded Mouse PD-1, Fc Tag (Cat. No. PD1-M5259) on Protein A Biosensor, can bind Mouse PD-L2, His Tag (Cat. No. PD2-M52E3) with an affinity constant of 0.13 µM as determined in BLI assay (ForteBio Octet Red96e) (Routinely tested).

Background

Programmed cell death 1 ligand 2 (PD-L2 or PDCD1 ligand 2) is also known as Butyrophilin B7-DC, CD antigen CD273, which belongs to the immunoglobulin superfamily or BTN/MOG family. The expression of PD-L2 is up-regulated by IFNG/IFN-gamma stimulation in monocytes and induced on dendritic cells grown from peripheral blood mononuclear cells with CSF2 and IL-4. PD-L2 Involved in the costimulatory signal, essential for T-cell proliferation and IFNG production in a PDCD1-independent manner. PD-L2 interaction with PDCD1 inhibits T-cell proliferation by blocking cell cycle progression and cytokine production.

