

Source

Monoclonal Anti-PEG Antibody, Mouse IgG1 (5G3-1C6) is a Mouse monoclonal antibody recombinantly expressed from HEK293 cells.

Clone

5G3-1C6

Species

Mouse

Isotype

Mouse IgG1 | Mouse Kappa

Conjugate

Unconjugated

Antibody Type

Recombinant Monoclonal

Reactivity

Chemical

Immunogen

PEG

Specificity

Specifically recognizes PEG.

Application

Application	Recommended Usage
ELISA	5-625 ng/mL

Purity

>90% as determined by SDS-PAGE.

Purification

Protein A purified / Protein G purified

Formulation

Lyophilized from 0.22 µm filtered solution in PBS, pH7.4 with trehalose as protectant.

Contact us for customized product form or formulation.

Reconstitution

Please see Certificate of Analysis for specific instructions.

For best performance, we strongly recommend you to follow the reconstitution protocol provided in the CoA.

Storage

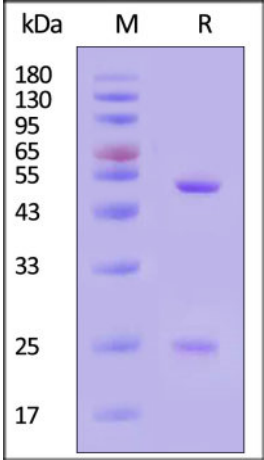
For long term storage, the product should be stored at lyophilized state at -20°C or lower.

Please avoid repeated freeze-thaw cycles.

This product is stable after storage at:

- 20°C to -70°C for 12 months in lyophilized state;
- 70°C for 3 months under sterile conditions after reconstitution.

SDS-PAGE



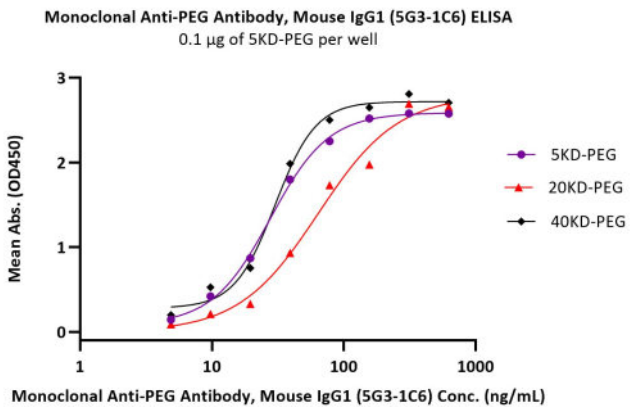
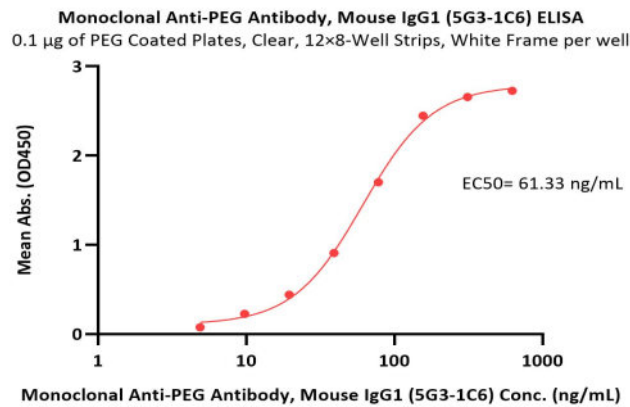
Monoclonal Anti-PEG Antibody, Mouse IgG1 (5G3-1C6)

Catalog # PEG-M687



Monoclonal Anti-PEG Antibody, Mouse IgG1 (5G3-1C6) on SDS-PAGE under reducing (R) condition. The gel was stained with Coomassie Blue. The purity of the protein is greater than 90% (With [Star Ribbon Pre-stained Protein Marker](#)).

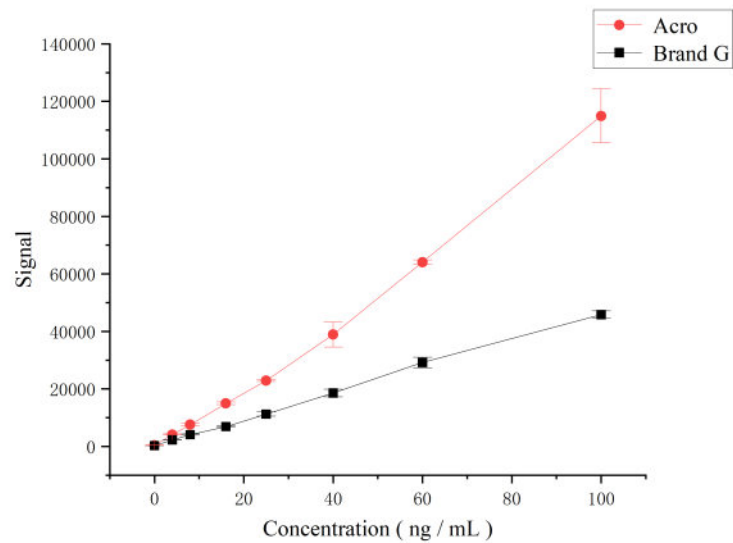
Bioactivity-ELISA



Immobilized PEG Coated Plates, Clear, 12×8-Well Strips, White Frame at 1 µg/mL (100 µL/well) can bind Monoclonal Anti-PEG Antibody, Mouse IgG1 (5G3-1C6) (Cat. No. PEG-M687) with a linear range of 5-156 ng/mL (QC tested).

Immobilized 5KD-PEG/20KD-PEG/40KD-PEG at 1 µg/mL (100 µL/well) can bind Monoclonal Anti-PEG Antibody, Mouse IgG1 (5G3-1C6) (Cat. No. PEG-M687) with a linear range of 5-78 ng/mL (Routinely tested).

Bioactivity-MSD



MSD assay for the Detection of anti-IFN-PEG(Hide drug info) in Human Serum.

Immobilized Biotin Human IFN on MSD Gold™ 96-well Streptavidin Plate,can bind anti-IFN-PEG when detected by Sulfo Anti-PEG Antibody.Use the MESO QuickPlex SQ 120 MM instrument for analysis.

Background

Polyethylene glycol, referred to as PEG, is used as an inactive ingredient in the pharmaceutical industry as a solvent, plasticizer, surfactant, ointments, and suppository base, and tablet and capsule lubricant. PEG has low toxicity with systemic absorption less than 0.5%. PEGylation occurs when PEGs are attached to various protein medications, allowing for greater solubility for certain drugs. Examples of PEGylated medications include PEG-interferon alpha (Pegintron) and PEG-filgrastim (Neulasta)

Discounts, Gifts, and more!

