

Human Secretory Component Protein, Strep Tag

Catalog # SCT-H5280



Synonym

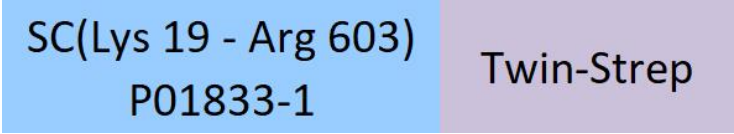
Secretory Component

Source

Human Secretory Component Protein, Strep Tag (SCT-H5280) is expressed from human 293 cells (HEK293). It contains AA Lys 19 - Arg 603 (Accession # [P01833-1](#)).

Predicted N-terminus: Lys 19

Molecular Characterization



This protein carries a twin strep tag at the C-terminus.

The protein has a calculated MW of 67.6 kDa. The protein migrates as 80-100 kDa under reducing (R) condition (SDS-PAGE) due to glycosylation.

Endotoxin

Less than 1.0 EU per µg by the LAL method / rFC method.

Purity

>90% as determined by SDS-PAGE.

Formulation

Lyophilized from 0.22 µm filtered solution in PBS, pH7.4 with trehalose as protectant.

Contact us for customized product form or formulation.

Reconstitution

Please see Certificate of Analysis for specific instructions.

*For best performance, we strongly recommend you to follow the reconstitution protocol provided in the CoA.*

Storage

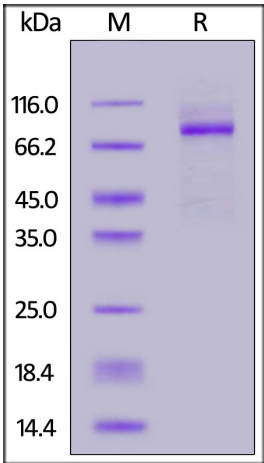
For long term storage, the product should be stored at lyophilized state at -20°C or lower.

*Please avoid repeated freeze-thaw cycles.*

This product is stable after storage at:

- -20°C to -70°C for 12 months in lyophilized state;
- -70°C for 3 months under sterile conditions after reconstitution.

SDS-PAGE



Human Secretory Component Protein, Strep Tag on SDS-PAGE under reducing (R) condition. The gel was stained with Coomassie Blue. The purity of the protein is greater than 90%.

Background

The secretory component (SC) is a unique polypeptide chain that may be found in immunoglobulins A and M (IgA and IgM). The SC wraps around two IgA units joined by a J chain protein fragment, resulting in a configuration with each of the two antigen binding regions of the two constituent y-shaped antibodies exposed. One identified function of secretory components is to protect IgA antibodies from degradation by the gastric acids and enzymes of the digestive system. It also appears that SC may serve in the three-dimensional organization or in the transport and distribution of the resulting IgA complexes.



Human Secretory Component Protein, Strep Tag

Catalog # SCT-H5280

