

Synonym

BSRPC

Source

Cynomolgus SEZ6 Protein, His Tag(SE6-C52H4) is expressed from human 293 cells (HEK293). It contains AA Leu 20 - His 927 (Accession # [A0A2K5WPJ4-1](#)).

Predicted N-terminus: Leu 20

Molecular Characterization

SEZ6(Leu 20 - His 927)
A0A2K5WPJ4-1

Poly-his

This protein carries a polyhistidine tag at the C-terminus.

The protein has a calculated MW of 99.9 kDa. The protein migrates as 130-180 kDa when calibrated against [Star Ribbon Pre-stained Protein Marker](#) under reducing (R) condition (SDS-PAGE) due to glycosylation.

Endotoxin

Less than 1.0 EU per µg by the LAL method / rFC method.

Purity

>90% as determined by SDS-PAGE.

>95% as determined by SEC-MALS.

Formulation

Lyophilized from 0.22 µm filtered solution in PBS, pH7.4 with trehalose as protectant.

Contact us for customized product form or formulation.

Reconstitution

Please see Certificate of Analysis for specific instructions.

For best performance, we strongly recommend you to follow the reconstitution protocol provided in the CoA.

Storage

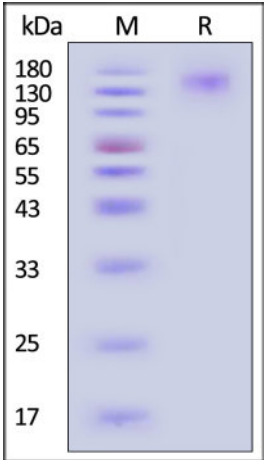
For long term storage, the product should be stored at lyophilized state at -20°C or lower.

Please avoid repeated freeze-thaw cycles.

This product is stable after storage at:

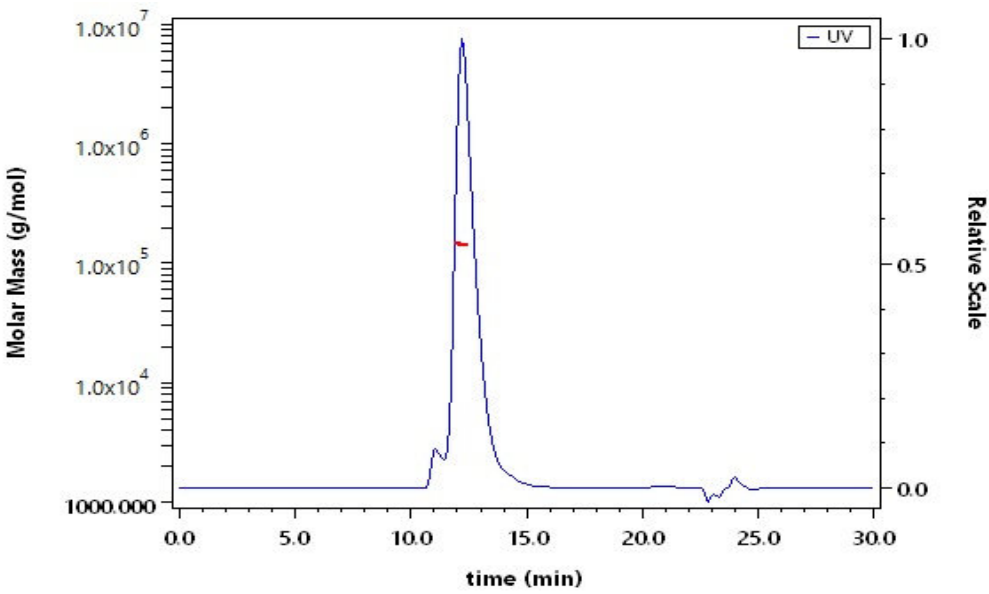
- 20°C to -70°C for 12 months in lyophilized state;
- 70°C for 3 months under sterile conditions after reconstitution.

SDS-PAGE



Cynomolgus SEZ6 Protein, His Tag on SDS-PAGE under reducing (R) condition. The gel was stained with Coomassie Blue. The purity of the protein is greater than 90% (With [Star Ribbon Pre-stained Protein Marker](#)).

SEC-MALS



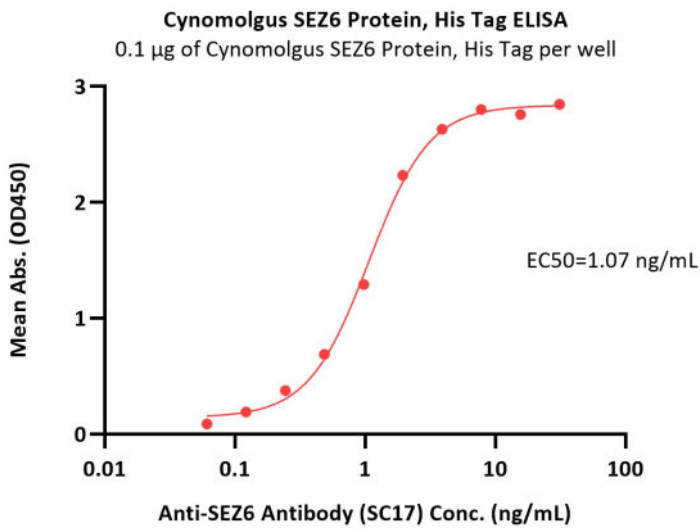
The purity of Cynomolgus SEZ6 Protein, His Tag (Cat. No. SE6-C52H4) is more than 95% and the molecular weight of this protein is around 130-170 kDa verified by SEC-MALS.

[Report](#)

Bioactivity-ELISA

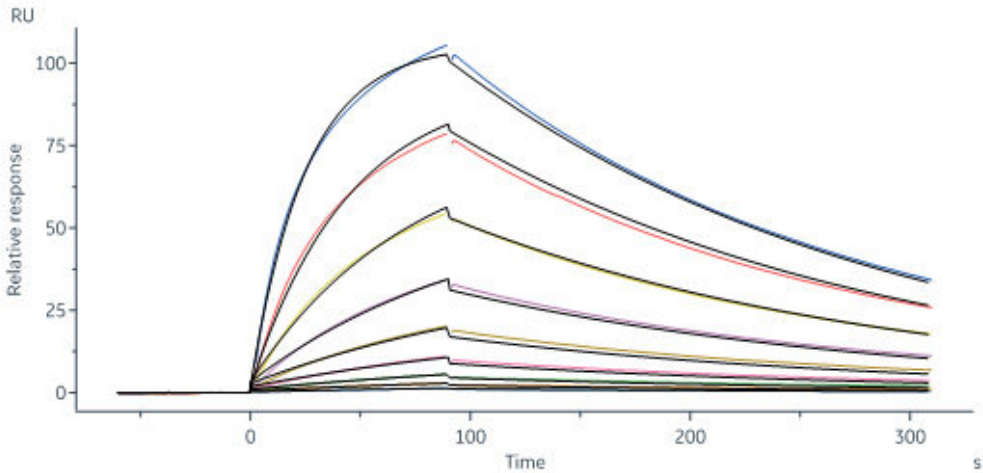
Discounts, Gifts,
and more!





Immobilized Cynomolgus SEZ6 Protein, His Tag (Cat. No. SE6-C52H4) at 1 µg/mL (100 µL/well) can bind Anti-SEZ6 Antibody (SC17) with a linear range of 0.06-2 ng/mL (QC tested).

Bioactivity-SPR



Anti-SEZ6 Antibody (SC17) captured on Protein A Chip can bind Cynomolgus SEZ6 Protein, His Tag (Cat. No. SE6-C52H4) with an affinity constant of 72.9 nM as determined in SPR assay (Biacore 8K) (Routinely tested).

Background

May play a role in cell-cell recognition and in neuronal membrane signaling. Seems to be important for the achievement of the necessary balance between dendrite elongation and branching during the elaboration of a complex dendritic arbor. Involved in the development of appropriate excitatory synaptic connectivity.

Discounts, Gifts,
and more!

