

Biotinylated Human Siglec-2 / CD22 Protein, His,Avitag™, premium grade

Catalog # SI2-H82E3



Synonym

CD22, SIGLEC2, BL-CAM, SIGLEC-2, Siglec2, SIGLEC2FLJ22814

Source

Biotinylated Human Siglec-2, His,Avitag, premium grade (SI2-H82E3) is expressed from human 293 cells (HEK293). It contains AA Asp 20 - Arg 687 (Accession # [P20273-1](#)).

Predicted N-terminus: Asp 20

It is produced under our rigorous quality control system that incorporates a comprehensive set of tests including sterility and endotoxin tests. Product performance is carefully validated and tested for compatibility for cell culture use or any other applications in the early preclinical stage.

MBS-C007 is the GMP version of this SI2-H82E3. These two proteins display indistinguishable performance profiles, thereby ensuring a seamless transition for end users from early preclinical stag to later clinical phases.

Molecular Characterization



Other Tags and Version Biotin & Other Labeled Version

This protein carries a polyhistidine tag at the C-terminus, followed by an Avi tag (Avitag™).

The protein has a calculated MW of 78.7 kDa. The protein migrates as 108 kDa±3 kDa when calibrated against [Star Ribbon Pre-stained Protein Marker](#) under reducing (R) condition (SDS-PAGE) due to glycosylation.

Labeling

Biotinylation of this product is performed using Avitag™ technology. Briefly, the single lysine residue in the Avitag is enzymatically labeled with biotin.

Protein Ratio

Passed as determined by the HABA assay / binding ELISA.

Endotoxin

Less than 0.1 EU per µg by the LAL method / rFC method.

Host Cell Protein

<0.5 ng/µg of protein tested by ELISA.

Sterility

Negative

Mycoplasma

Negative

Purity

>95% as determined by SDS-PAGE.

>90% as determined by SEC-MALS.

Formulation

Lyophilized from 0.22 µm filtered solution in PBS, pH7.4 with trehalose as protectant.

Contact us for customized product form or formulation.

Reconstitution

Please see Certificate of Analysis for specific instructions.

For best performance, we strongly recommend you to follow the reconstitution protocol provided in the CoA.

Storage

For long term storage, the product should be stored at lyophilized state at -20°C or lower.

Please avoid repeated freeze-thaw cycles.

This product is stable after storage at:

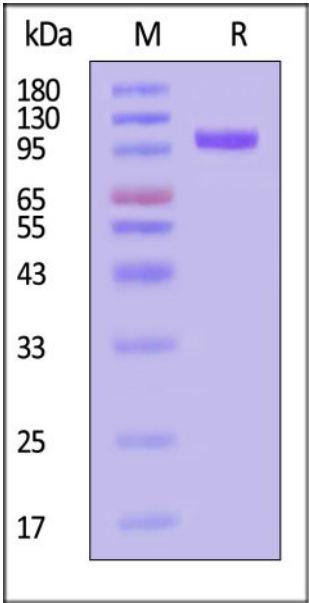
- -20°C to -70°C for 24 months in lyophilized state;
- -70°C for 3 months under sterile conditions after reconstitution.

ACRO Quality Management System

- QMS(ISO, GMP).

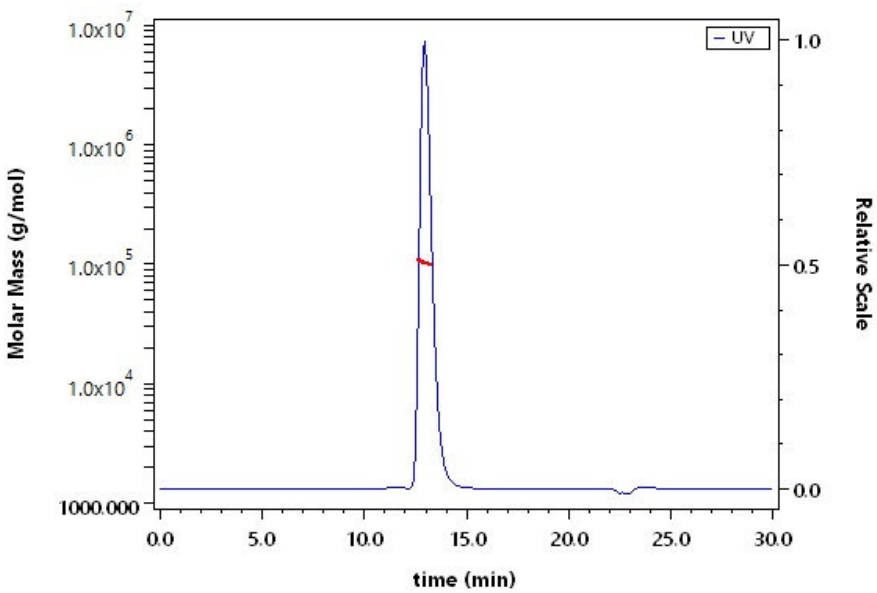
- [Quality Advantages](#)
- [Quality Control Process](#)

SDS-PAGE



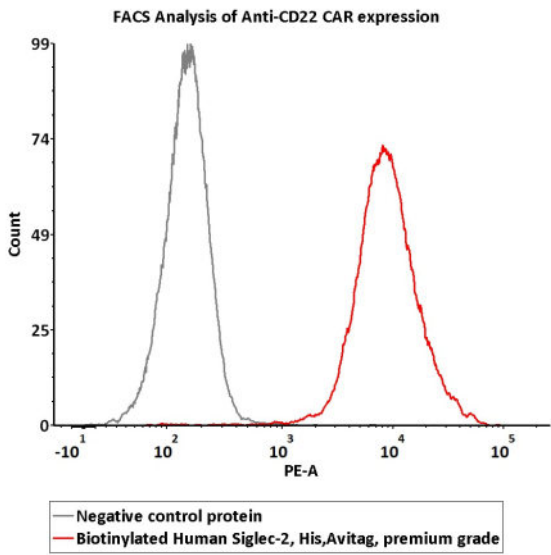
Biotinylated Human Siglec-2, His,Avitag, premium grade on SDS-PAGE under reducing (R) condition. The gel was stained with Coomassie Blue. The purity of the protein is greater than 95% (With [Star Ribbon Pre-stained Protein Marker](#)).

SEC-MALS



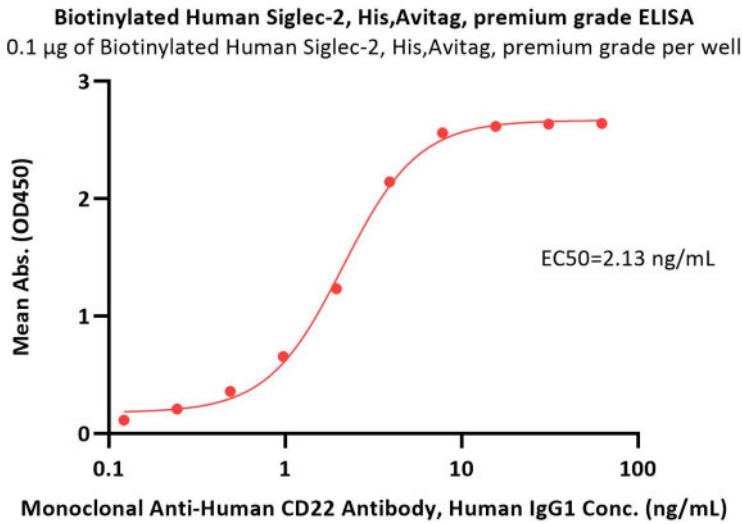
The purity of Biotinylated Human Siglec-2, His,Avitag, premium grade (Cat. No. SI2-H82E3) is more than 90% and the molecular weight of this protein is around 80-120 kDa verified by SEC-MALS.

Bioactivity-FACS



2e5 of anti-CD22 CAR-293 cells were stained with 100 μ L of 3 μ g/mL of Biotinylated Human Siglec-2, His,Avitag, premium grade (Cat. No. SI2-H82E3) and negative control protein respectively, washed and then followed by PE-SA and analyzed with FACS (QC tested).

Bioactivity-ELISA



Immobilized Biotinylated Human Siglec-2, His,Avitag, premium grade (Cat. No. SI2-H82E3) at 1 μ g/mL (100 μ L/well) on streptavidin (Cat. No. STN-N5116) precoated (0.5 μ g/well) plate can bind Monoclonal Anti-Human CD22 Antibody, Human IgG1 with a linear range of 0.1-4 ng/mL (QC tested).

Background

B-cell receptor CD22 is also known as Sialic acid-binding Ig-like lectin 2 (Siglec-2), B-lymphocyte cell adhesion molecule (BL-CAM), T-cell surface antigen Leu-14, which belongs to the immunoglobulin superfamily and SIGLEC (sialic acid binding Ig-like lectin) family. CD22 mediates B-cell B-cell interactions, and may be involved in the localization of B-cells in lymphoid tissues. Siglec-2 / CD22 binds sialylated glycoproteins, one of which is CD45. Siglec2 / CD22 plays a role in positive regulation through interaction with Src family tyrosine kinases and may also act as an inhibitory receptor by recruiting cytoplasmic phosphatases via their SH2 domains that block signal transduction through dephosphorylation of signaling molecules.



www.acrobiosystems.com