

Human Siglec-8 Protein, His Tag (MALS verified)

Catalog # SI8-H52H8



Synonym

Siglec-8,SAF-2,SIGLEC8,SAF2

Source

Human Siglec-8, His Tag(SI8-H52H8) is expressed from human 293 cells (HEK293). It contains AA Met 17 - Ala 363 (Accession # [Q9NYZ4-1](#)).
Predicted N-terminus: Met 17

Molecular Characterization



This protein carries a polyhistidine tag at the C-terminus.
The protein has a calculated MW of 39.7 kDa. The protein migrates as 50-55 kDa under reducing (R) condition (SDS-PAGE) due to glycosylation.
The protein is designed as a dimer.

Endotoxin

Less than 1.0 EU per µg by the LAL method / rFC method.

Purity

>95% as determined by SDS-PAGE.

Formulation

Lyophilized from 0.22 µm filtered solution in PBS with Arginine, pH7.4 with trehalose as protectant.

Contact us for customized product form or formulation.

Reconstitution

Please see Certificate of Analysis for specific instructions.

For best performance, we strongly recommend you to follow the reconstitution protocol provided in the CoA.

Storage

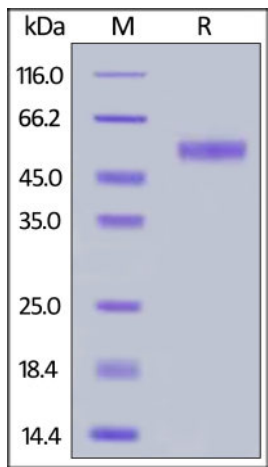
For long term storage, the product should be stored at lyophilized state at -20°C or lower.

Please avoid repeated freeze-thaw cycles.

This product is stable after storage at:

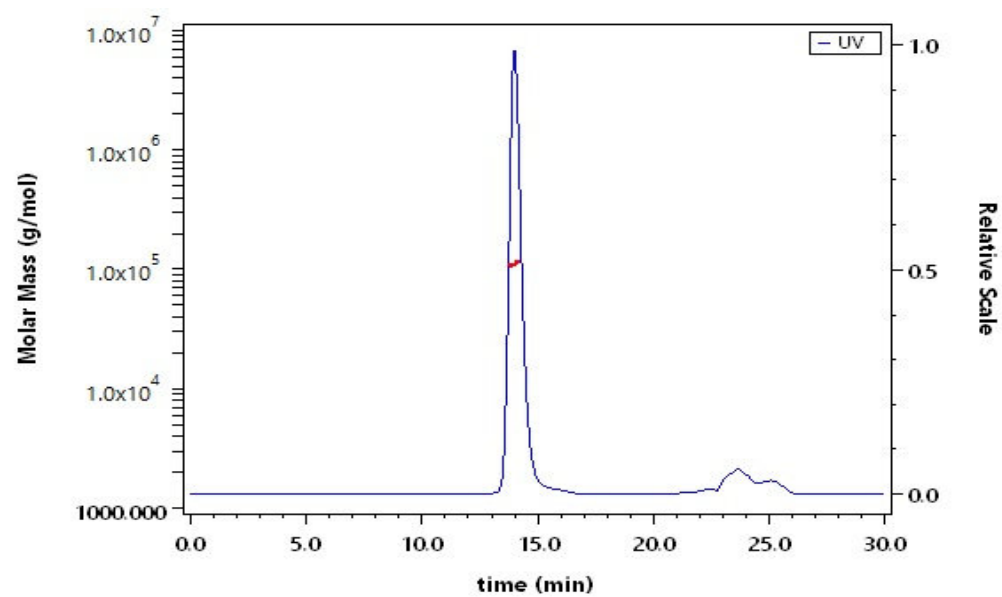
- 20°C to -70°C for 12 months in lyophilized state;
- 70°C for 3 months under sterile conditions after reconstitution.

SDS-PAGE



Human Siglec-8, His Tag on SDS-PAGE under reducing (R) condition. The gel was stained with Coomassie Blue. The purity of the protein is greater than 95%.

SEC-MALS



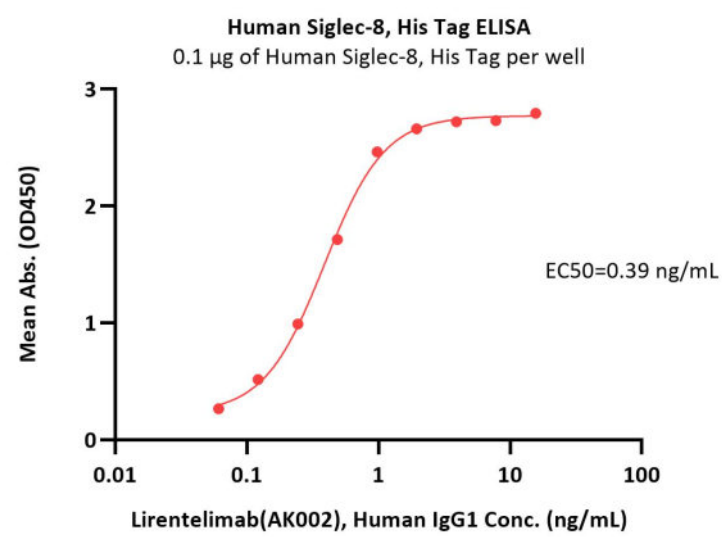
The purity of Human Siglec-8, His Tag (Cat. No. SI8-H52H8) is more than 85% and the molecular weight of this protein is around 102-125 kDa verified by SEC-MALS.

[Report](#)

Bioactivity-ELISA

Discounts, Gifts,
and more!





Immobilized Human Siglec-8, His Tag (Cat. No. SI8-H52H8) at 1 µg/mL (100 µL/well) can bind Lirentelimab(AK002), Human IgG1 with a linear range of 0.06-1 ng/mL (QC tested).

Background

Siglec-8 is also known as SIGLEC8, SAF2, SIGLEC-8, SIGLEC8L and sialic acid binding Ig like lectin 8. Siglec-8 was first identified by CD33 homology screening of ESTs from a cDNA library generated from a patient diagnosed with idiopathic hypereosinophilic syndrome and was originally termed SAF-2 (sialoadhesin family 2). At the tissue level, Siglec-8 mRNA was found to be most highly expressed in lung, PBMCs, spleen, and kidney. Two splice variants of Siglec-8 exist. The initially characterized form contains 431 amino acid residues in total, subsequently, a longer form of Siglec-8, initially termed Siglec-8L. Both forms of Siglec-8 are found in eosinophils and contain a V-set domain with lectin activity and two C2-type Ig repeat domains in the extracellular region.

Discounts, Gifts,
and more!

