

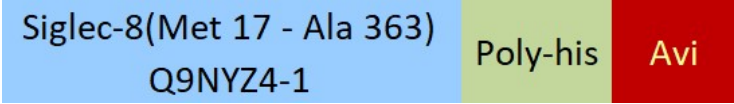
Synonym

Siglec-8,SAF-2,SIGLEC8,SAF2

Source

Biotinylated Human Siglec-8, His,Avitag(SI8-H82E9) is expressed from human 293 cells (HEK293). It contains AA Met 17 - Ala 363 (Accession # [Q9NYZ4-1](#)). Predicted N-terminus: Met 17

Molecular Characterization



This protein carries a polyhistidine tag at the C-terminus, followed by an Avi tag (Avitag™).

The protein has a calculated MW of 41.4 kDa. The protein migrates as 55-65 kDa under reducing (R) condition (SDS-PAGE) due to glycosylation.

Labeling

*Biotinylation of this product is performed using Avitag™ technology. Briefly, the single lysine residue in the Avitag is enzymatically labeled with biotin.*

Protein Ratio

Passed as determined by the HABA assay / binding ELISA.

Purity

>95% as determined by SDS-PAGE.

Formulation

Lyophilized from 0.22 µm filtered solution in PBS, 0.5 M Arginine, pH7.4 with trehalose as protectant.

Contact us for customized product form or formulation.

Reconstitution

Please see Certificate of Analysis for specific instructions.

*For best performance, we strongly recommend you to follow the reconstitution protocol provided in the CoA.*

Storage

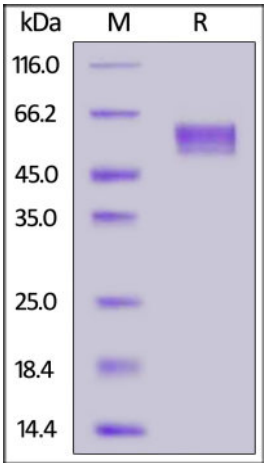
For long term storage, the product should be stored at lyophilized state at -20°C or lower.

*Please avoid repeated freeze-thaw cycles.*

This product is stable after storage at:

- 20°C to -70°C for 12 months in lyophilized state;
- 70°C for 3 months under sterile conditions after reconstitution.

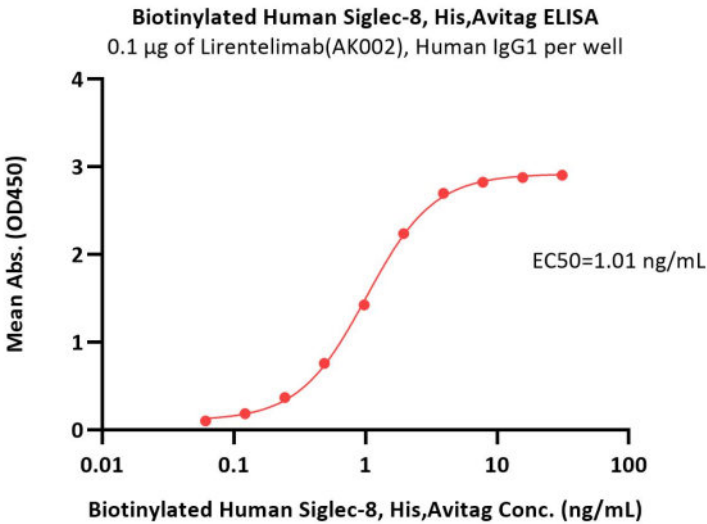
SDS-PAGE



Biotinylated Human Siglec-8, His,Avitag on SDS-PAGE under reducing (R) condition. The gel was stained with Coomassie Blue. The purity of the protein is greater than 95%.

Bioactivity-ELISA





Immobilized Lirentelimab(AK002), Human IgG1 at 1 µg/mL (100 µL/well) can bind Biotinylated Human Siglec-8, His,Avitag (Cat. No. SI8-H82E9) with a linear range of 0.06-2 ng/mL (QC tested).

Background

Siglec-8 is also known as SIGLEC8, SAF2, SIGLEC-8, SIGLEC8L and sialic acid binding Ig like lectin 8. Siglec-8 was first identified by CD33 homology screening of ESTs from a cDNA library generated from a patient diagnosed with idiopathic hypereosinophilic syndrome and was originally termed SAF-2 (sialoadhesin family 2). At the tissue level, Siglec-8 mRNA was found to be most highly expressed in lung, PBMCs, spleen, and kidney. Two splice variants of Siglec-8 exist. The initially characterized form contains 431 amino acid residues in total, subsequently, a longer form of Siglec-8, initially termed Siglec-8L. Both forms of Siglec-8 are found in eosinophils and contain a V-set domain with lectin activity and two C2-type Ig repeat domains in the extracellular region.

Discounts, Gifts,  
and more!

