

Synonym

SIRPG,CD172g,SIRPB2,SIRP-gamma,SIRP-b2,SIRP-beta-2

Source

Human SIRP gamma, Fc Tag(SIG-H5253) is expressed from human 293 cells (HEK293). It contains AA Glu 29 - Ser 364 (Accession # [AAH64532](#)).

Predicted N-terminus: Glu 29

Molecular Characterization

SIRP gamma(Glu 29 - Ser 364) AAH64532	Fc(Pro 100 - Lys 330) P01857
--	---------------------------------

This protein carries a human IgG1 Fc tag at the C-terminus.

The protein has a calculated MW of 63.7 kDa. The protein migrates as 67-85 kDa under reducing (R) condition (SDS-PAGE) due to glycosylation.

Endotoxin

Less than 1.0 EU per µg by the LAL method / rFC method.

Purity

>95% as determined by SDS-PAGE.

Formulation

Lyophilized from 0.22 µm filtered solution in 50 mM Tris, 100 mM Glycine, pH7.5 with trehalose as protectant.

Contact us for customized product form or formulation.

Reconstitution

Please see Certificate of Analysis for specific instructions.

For best performance, we strongly recommend you to follow the reconstitution protocol provided in the CoA.

Storage

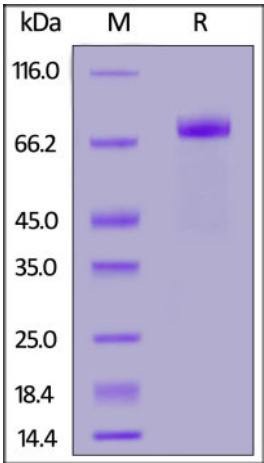
For long term storage, the product should be stored at lyophilized state at -20°C or lower.

Please avoid repeated freeze-thaw cycles.

This product is stable after storage at:

- 20°C to -70°C for 12 months in lyophilized state;
- 70°C for 3 months under sterile conditions after reconstitution.

SDS-PAGE

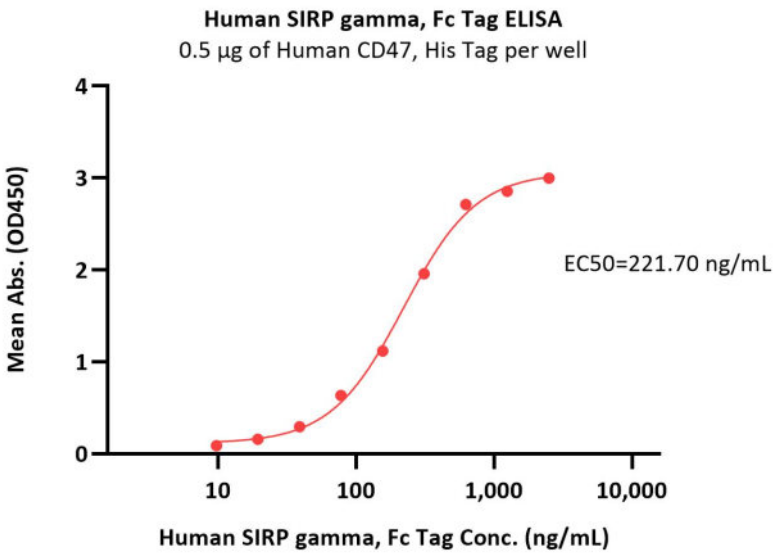


Human SIRP gamma, Fc Tag on SDS-PAGE under reducing (R) condition. The gel was stained with Coomassie Blue. The purity of the protein is greater than 95%.

Bioactivity-ELISA

Discounts, Gifts,
and more!





Immobilized Human CD47, His Tag (Cat. No. CD7-H5227) at 5 µg/mL (100 µL/well) can bind Human SIRP gamma, Fc Tag (Cat. No. SIG-H5253) with a linear range of 20-312 ng/mL (QC tested).

Background

Signal-regulatory protein gamma (SIRPG or SIRP-gamma) is also known as CD172 antigen-like family member B (CD172g), Signal-regulatory protein beta-2 (SIRPB2), is a single-pass type I membrane protein. SIRPG is expressed on CD4+ T-cells, CD8+ T-cells, CD56-bright natural killer (NK) cells, CD20+ cells, and all activated NK cells. SIRPG interacts with CD47. On binding with CD47, CD172g mediates cell-cell adhesion.

Discounts, Gifts,
and more!

