

Human SLITRK6 Protein, His Tag (MALS verified)

Catalog # SL6-H52H9



Synonym

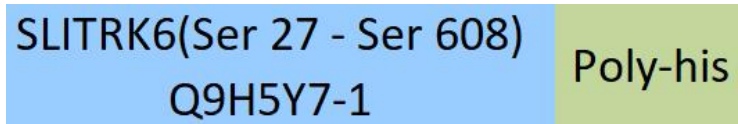
SLITRK6

Source

Human SLITRK6, His Tag(SL6-H52H9) is expressed from human 293 cells (HEK293). It contains AA Ser 27 - Ser 608 (Accession # [Q9H5Y7-1](#)).

Predicted N-terminus: Ser 27

Molecular Characterization



This protein carries a polyhistidine tag at the C-terminus.

The protein has a calculated MW of 66.7 kDa. The protein migrates as 80-95 kDa when calibrated against [Star Ribbon Pre-stained Protein Marker](#) under reducing (R) condition (SDS-PAGE) due to glycosylation.

Endotoxin

Less than 1.0 EU per µg by the LAL method / rFC method.

Purity

>95% as determined by SDS-PAGE.

>90% as determined by SEC-MALS.

Formulation

Lyophilized from 0.22 µm filtered solution in PBS, pH7.4 with trehalose as protectant.

Contact us for customized product form or formulation.

Reconstitution

Please see Certificate of Analysis for specific instructions.

*For best performance, we strongly recommend you to follow the reconstitution protocol provided in the CoA.*

Storage

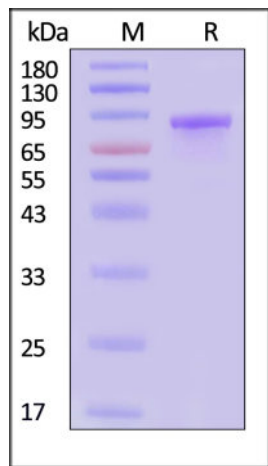
For long term storage, the product should be stored at lyophilized state at -20°C or lower.

*Please avoid repeated freeze-thaw cycles.*

This product is stable after storage at:

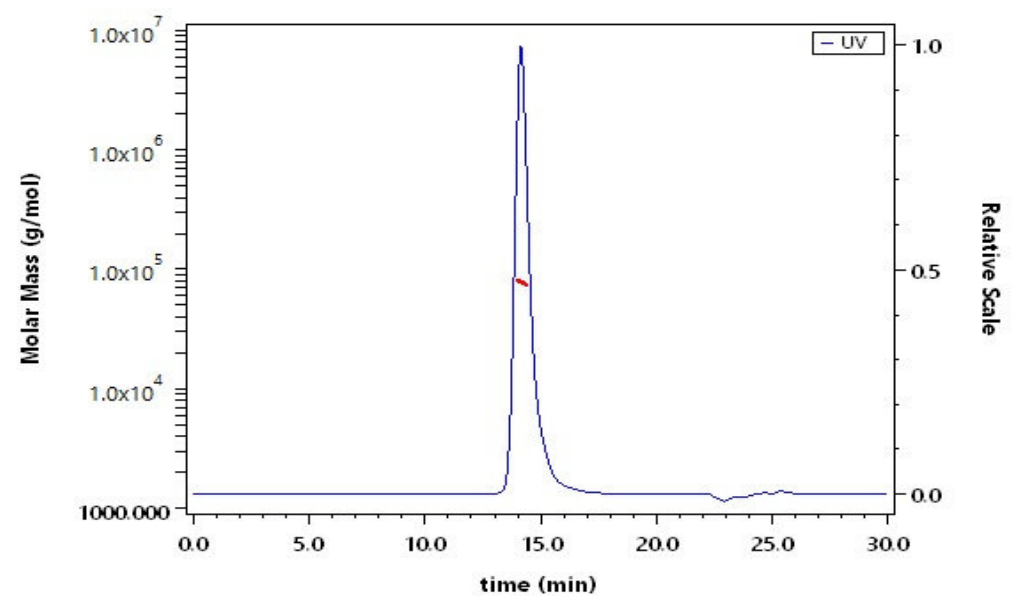
- -20°C to -70°C for 12 months in lyophilized state;
- -70°C for 3 months under sterile conditions after reconstitution.

SDS-PAGE



Human SLITRK6, His Tag on SDS-PAGE under reducing (R) condition. The gel was stained with Coomassie Blue. The purity of the protein is greater than 95% (With [Star Ribbon Pre-stained Protein Marker](#)).

SEC-MALS



The purity of Human SLITRK6, His Tag (Cat. No. SL6-H52H9) is more than 90% and the molecular weight of this protein is around 70-90 kDa verified by SEC-MALS.

[Report](#)

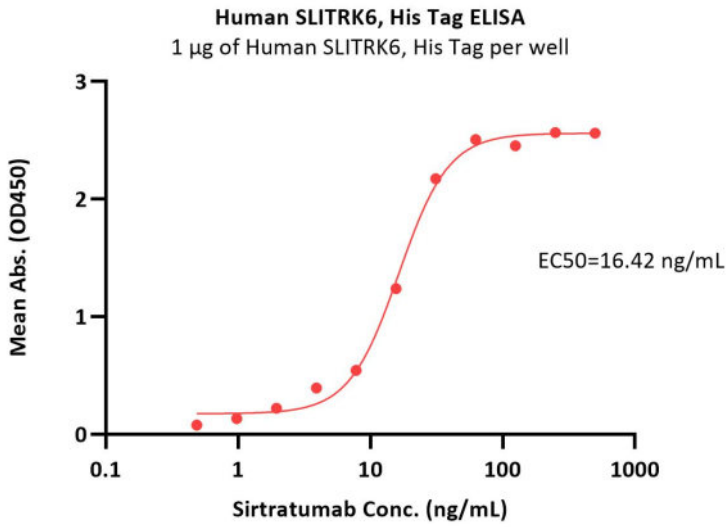
Bioactivity-ELISA

Discounts, Gifts,  
and more!



Human SLITRK6 Protein, His Tag (MALS verified)

Catalog # SL6-H52H9



Immobilized Human SLITRK6, His Tag (Cat. No. SL6-H52H9) at 10 µg/mL (100 µL/well) can bind Sirtratumab with a linear range of 0.5-31 ng/mL (QC tested).

Background

SLIT and NTRK-like protein 6 (SLITRK6) belongs to the SLITRK family. SLITRK6 contains 11 LRR (leucine-rich) repeats, two LRRCT domains and two LRRNT domains. In adult brain, SLITRK6 is highly expressed in putamen and also is expressed in adult, fetal lung and fetal liver. SLITRK6 is also expressed at high levels in some brain tumors. Overexpression of SLITRK6 inhibites neurite outgrowth in cultured neurons.

