

Synonym

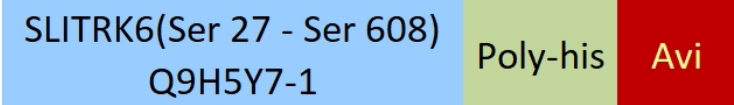
SLITRK6

Source

Biotinylated Human SLITRK6 protein, His,Avitag(SL6-H82E3) is expressed from human 293 cells (HEK293). It contains AA Ser 27 - Ser 608 (Accession # [Q9H5Y7-1](#)).

Predicted N-terminus: Ser 27

Molecular Characterization



This protein carries a polyhistidine tag at the C-terminus, followed by an Avi tag (Avitag™).

The protein has a calculated MW of 68.4 kDa. The protein migrates as 80-90 kDa when calibrated against [Star Ribbon Pre-stained Protein Marker](#) under reducing (R) condition (SDS-PAGE) due to glycosylation.

Labeling

*Biotinylation of this product is performed using Avitag™ technology. Briefly, the single lysine residue in the Avitag is enzymatically labeled with biotin.*

Protein Ratio

Passed as determined by the HABA assay / binding ELISA.

Purity

>90% as determined by SDS-PAGE.

Formulation

Lyophilized from 0.22 µm filtered solution in PBS, pH7.4 with trehalose as protectant.

Contact us for customized product form or formulation.

Reconstitution

Please see Certificate of Analysis for specific instructions.

*For best performance, we strongly recommend you to follow the reconstitution protocol provided in the CoA.*

Storage

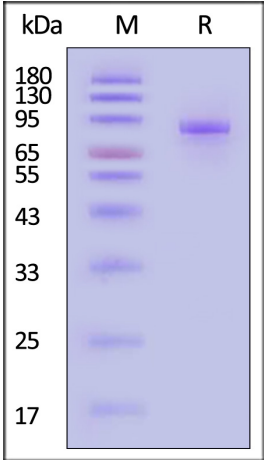
For long term storage, the product should be stored at lyophilized state at -20°C or lower.

*Please avoid repeated freeze-thaw cycles.*

This product is stable after storage at:

- -20°C to -70°C for 12 months in lyophilized state;
- -70°C for 3 months under sterile conditions after reconstitution.

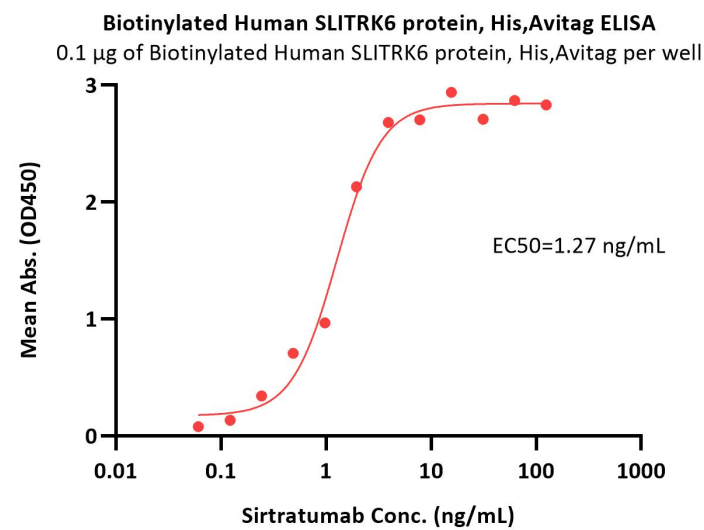
SDS-PAGE



Biotinylated Human SLITRK6 protein, His,Avitag on SDS-PAGE under reducing (R) condition. The gel was stained with Coomassie Blue. The purity of the protein is greater than 90% (With [Star Ribbon Pre-stained Protein Marker](#)).

Bioactivity-ELISA





Immobilized Biotinylated Human SLITRK6 protein, His,Avitag (Cat. No. SL6-H82E3) at 1 µg/mL (100 µL/well) on streptavidin (Cat. No. STN-N5116) precoated (0.5 µg/well) plate can bind Sirtratumab with a linear range of 0.06-4 ng/mL (QC tested).

Background

SLIT and NTRK-like protein 6 (SLITRK6) belongs to the SLITRK family. SLITRK6 contains 11 LRR (leucine-rich) repeats, two LRRCT domains and two LRRNT domains. In adult brain, SLITRK6 is highly expressed in putamen and also is expressed in adult, fetal lung and fetal liver. SLITRK6 is also expressed at high levels in some brain tumors. Overexpression of SLITRK6 inhibites neurite outgrowth in cultured neurons.

