

Synonym

SLAMF7, CD319, CS1, CRACC, 19A, FOAP-12

Source

Human SLAMF7, Fc Tag(SL7-H5256) is expressed from human 293 cells (HEK293). It contains AA Ser 23 - Met 226 (Accession # [Q9NQ25](#)).

Predicted N-terminus: Ser 23

Molecular Characterization

SLAMF7(Ser 23 - Met 226) AAH27867	Fc(Pro 100 - Lys 330) P01857
--------------------------------------	---------------------------------

This protein carries a human IgG1 Fc tag at the C-terminus.

The protein has a calculated MW of 49.02 kDa. The protein migrates as 60-67 kDa under reducing (R) condition (SDS-PAGE) due to glycosylation.

Endotoxin

Less than 0.1 EU per µg by the LAL method / rFC method.

Purity

>95% as determined by SDS-PAGE.

Formulation

Lyophilized from 0.22 µm filtered solution in PBS, pH7.4 with trehalose as protectant.

Contact us for customized product form or formulation.

Reconstitution

Please see Certificate of Analysis for specific instructions.

For best performance, we strongly recommend you to follow the reconstitution protocol provided in the CoA.

Storage

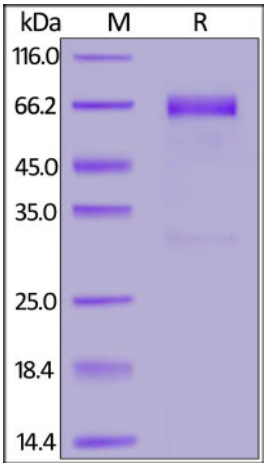
For long term storage, the product should be stored at lyophilized state at -20°C or lower.

Please avoid repeated freeze-thaw cycles.

This product is stable after storage at:

- 20°C to -70°C for 12 months in lyophilized state;
- 70°C for 3 months under sterile conditions after reconstitution.

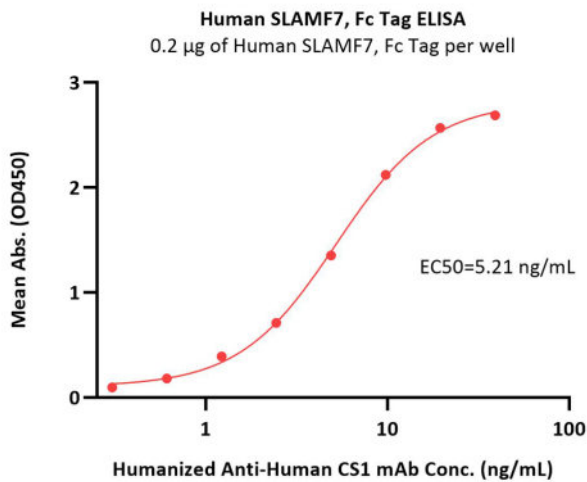
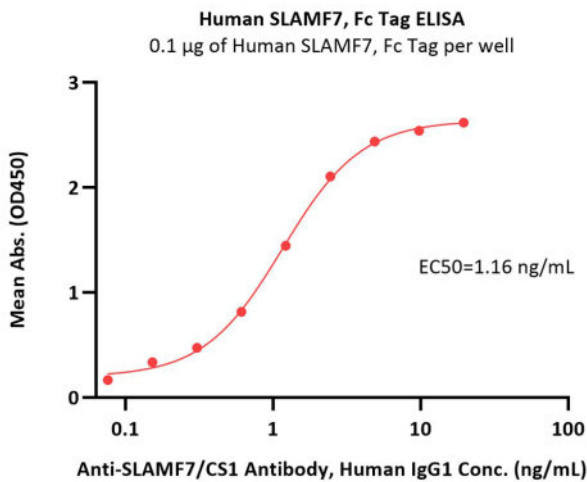
SDS-PAGE



Human SLAMF7, Fc Tag on SDS-PAGE under reducing (R) condition. The gel was stained with Coomassie Blue. The purity of the protein is greater than 95%.

Bioactivity-ELISA

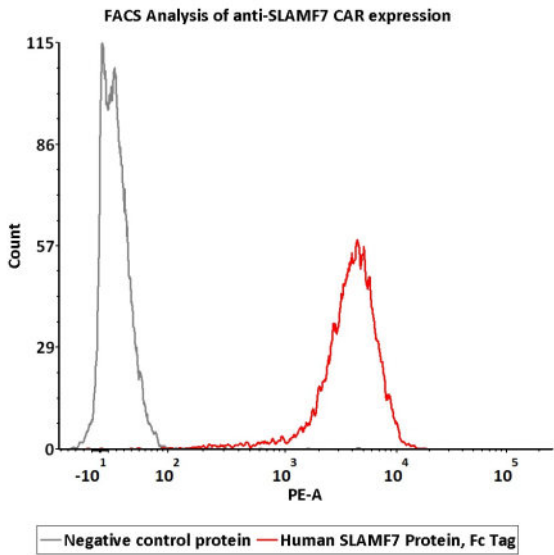




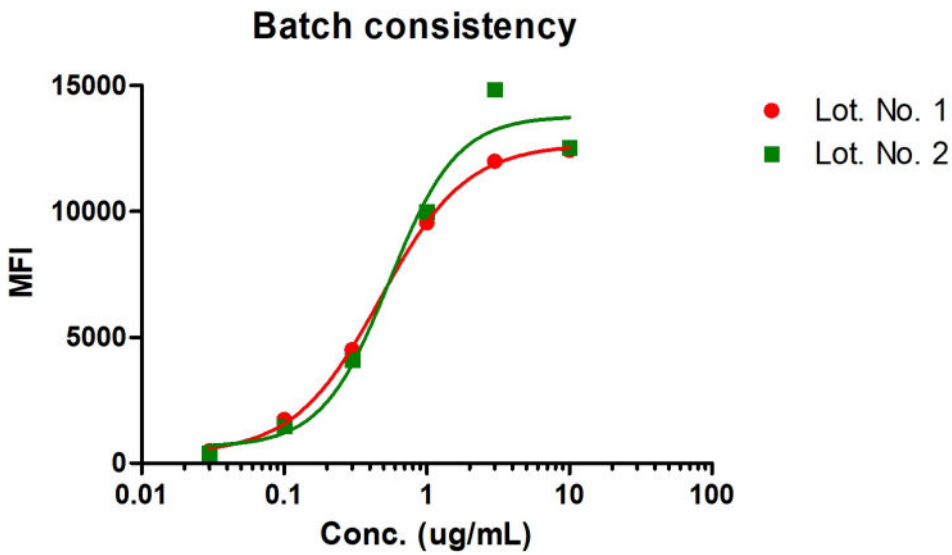
Immobilized Human SLAMF7, Fc Tag (Cat. No. SL7-H5256) at 1 µg/mL (100 µL/well) can bind Anti-SLAMF7/CS1 Antibody, Human IgG1 with a linear range of 0.2-2 ng/mL (QC tested).

Immobilized Human SLAMF7, Fc Tag (Cat. No. SL7-H5256) at 2 µg/mL (100 µL/well) can bind Humanized Anti-Human CS1 MAb with a linear range of 0.3-10 ng/mL (Routinely tested).

Bioactivity-FACS



2e5 of SLAMF7-CAR-293 cells transfected with anti-SLAMF7-scFv were stained with 100 µL of 0.3 µg/mL of Human SLAMF7, Fc Tag (Cat. No. SL7-H5256) and negative control protein respectively, washed and then followed by PE anti-human IgG Fc antibody and analyzed with FACS (Routinely tested).



Binding activity of two different lots of Human SLAMF7, Fc Tag against Anti-SLAMF7 CAR-293 cells was evaluated by flow cytometry. The result shows very high batch-to-batch consistency.

Background

SLAM family member 7 (SLAMF7) is also known as CD2-like receptor-activating cytotoxic cells (CRACC), Membrane protein FOAP-12, CD antigen CD319, Novel Ly9, Protein 19A, which is a single-pass type I membrane protein and a member of the CD2 family of cell surface receptors. SLAMF7 is expressed in spleen, lymph node, peripheral blood leukocytes, bone marrow, small intestine, stomach, appendix, lung and trachea. Isoform 1 of SLAMF7 mediates NK cell activation through a SH2D1A-independent extracellular signal-regulated ERK-mediated pathway. May play a role in lymphocyte adhesion. Isoform 3 of SLAMF7 does not mediate any NK cell activation.

