

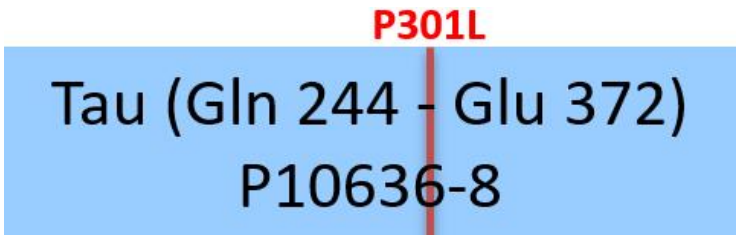
Synonym

DDPAC,FTDP-17,MAPT,MSTD,MTBT1,Tau,PHF-tau,TAU

Source

Human Tau-441 (K18, P301L) Protein, Tag Free(TAU-H5118) is expressed from E. coli cells. It contains AA Gln 244 - Glu 372 (Accession # [P10636-8](#) (P301L)). Predicted N-terminus: Met

Molecular Characterization



This protein carries no "tag".

The protein has a calculated MW of 13.8 kDa. The protein migrates as 14-15 kDa when calibrated against [Star Ribbon Pre-stained Protein Marker](#) under reducing (R) condition (SDS-PAGE).

Endotoxin

Less than 0.01 EU per µg by the LAL method / rFC method.

Purity

>95% as determined by SDS-PAGE.

Formulation

Supplied as 0.2 µm filtered solution in 20 mM Tris, 150 mM NaCl, pH7.5 with trehalose as protectant.

Contact us for customized product form or formulation.

Shipping

This product is supplied and shipped with dry ice, please inquire the shipping cost.

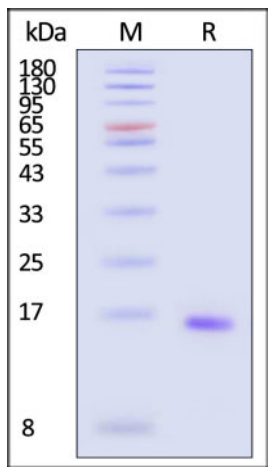
Storage

Please avoid repeated freeze-thaw cycles.

This product is stable after storage at:

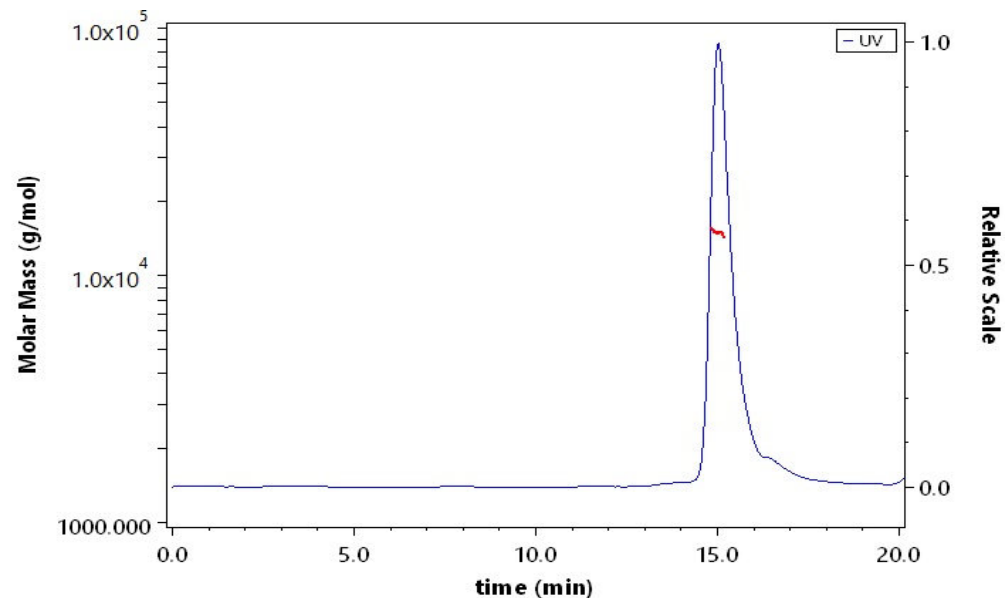
- The product MUST be stored at -70°C or lower upon receipt;
- -70°C for 3 months under sterile conditions.

SDS-PAGE



Human Tau-441 (K18, P301L) Protein, Tag Free on SDS-PAGE under reducing (R) condition. The gel was stained with Coomassie Blue. The purity of the protein is greater than 95% (With [Star Ribbon Pre-stained Protein Marker](#)).

SEC-MALS



The purity of Human Tau-441 (K18, P301L) Protein, Tag Free (Cat. No. TAU-H5118) is more than 85% and the molecular weight of this protein is around 12-18 kDa verified by SEC-MALS.

[Report](#)

Background

This gene encodes the microtubule-associated protein tau (MAPT) whose transcript undergoes complex, regulated alternative splicing, giving rise to several mRNA species. MAPT transcripts are differentially expressed in the nervous system, depending on stage of neuronal maturation and neuron type. MAPT gene mutations

Discounts, Gifts,
and more!



Human Tau-441 (K18, P301L) Protein, Tag Free, low endotoxin (MALS verified)

Catalog # TAU-H5118



have been associated with several neurodegenerative disorders such as Alzheimer's disease, Pick's disease, frontotemporal dementia, cortico-basal degeneration and progressive supranuclear palsy. [provided by RefSeq, Jul 2008]

Discounts, Gifts,
and more!

