



Synonym

HAVCR2,TIM3,TIMD3,FLJ14428,KIM3

Source

Human TIM-3, His Tag(TM3-H5229) is expressed from human 293 cells (HEK293). It contains AA Ser 22 - Arg 200 (Accession # [Q8TDQ0-1](#)).

Predicted N-terminus: Ser 22

Molecular Characterization

TIM-3(Ser 22 - Arg 200)
Q8TDQ0-1

Poly-his

This protein carries a polyhistidine tag at the C-terminus.

The protein has a calculated MW of 21.8 kDa. The protein migrates as 44-50 kDa when calibrated against [Star Ribbon Pre-stained Protein Marker](#) under reducing (R) condition (SDS-PAGE) due to glycosylation.

Endotoxin

Less than 1.0 EU per µg by the LAL method / rFC method.

Purity

>90% as determined by SDS-PAGE.

>90% as determined by SEC-MALS.

Formulation

Lyophilized from 0.22 µm filtered solution in PBS, pH7.4 with trehalose as protectant.

Contact us for customized product form or formulation.

Reconstitution

Please see Certificate of Analysis for specific instructions.

For best performance, we strongly recommend you to follow the reconstitution protocol provided in the CoA.

Storage

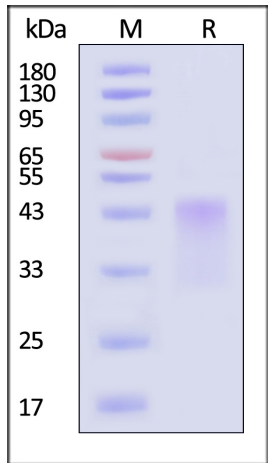
For long term storage, the product should be stored at lyophilized state at -20°C or lower.

Please avoid repeated freeze-thaw cycles.

This product is stable after storage at:

- 20°C to -70°C for 12 months in lyophilized state;
- 70°C for 3 months under sterile conditions after reconstitution.

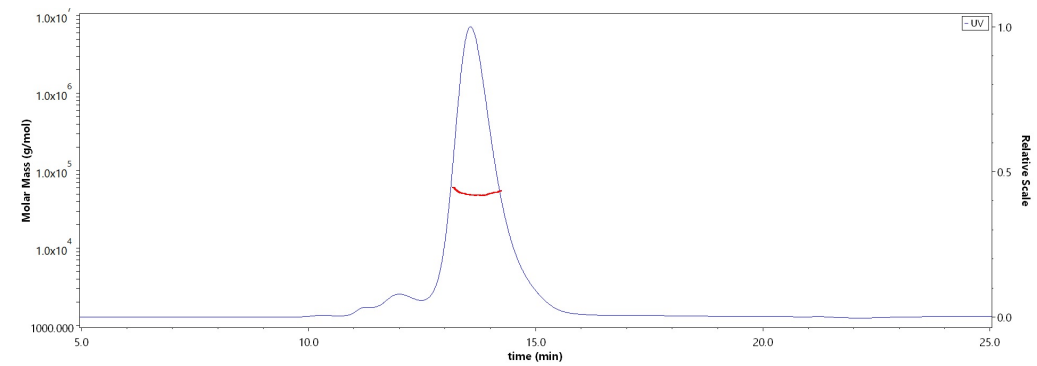
SDS-PAGE



Human TIM-3, His Tag on SDS-PAGE under reducing (R) condition. The gel was stained with Coomassie Blue. The purity of the protein is greater than 90% (With [Star Ribbon Pre-stained Protein Marker](#)).

Bioactivity-ELISA

SEC-MALS

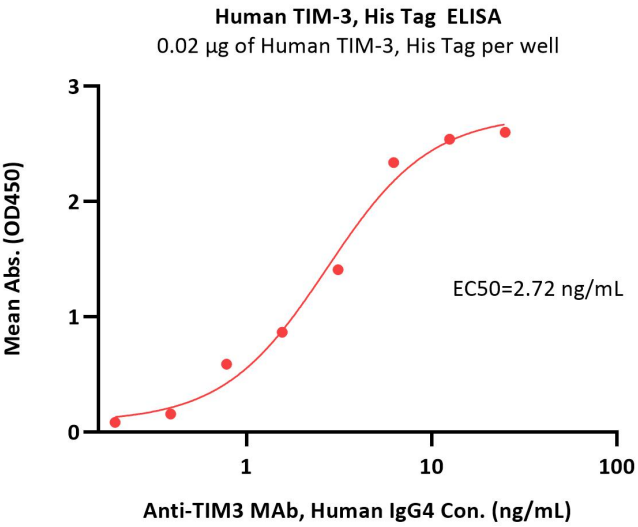


The purity of Human TIM-3, His Tag (Cat. No. TM3-H5229) is more than 90% and the molecular weight of this protein is around 35-50 kDa verified by SEC-MALS.

[Report](#)

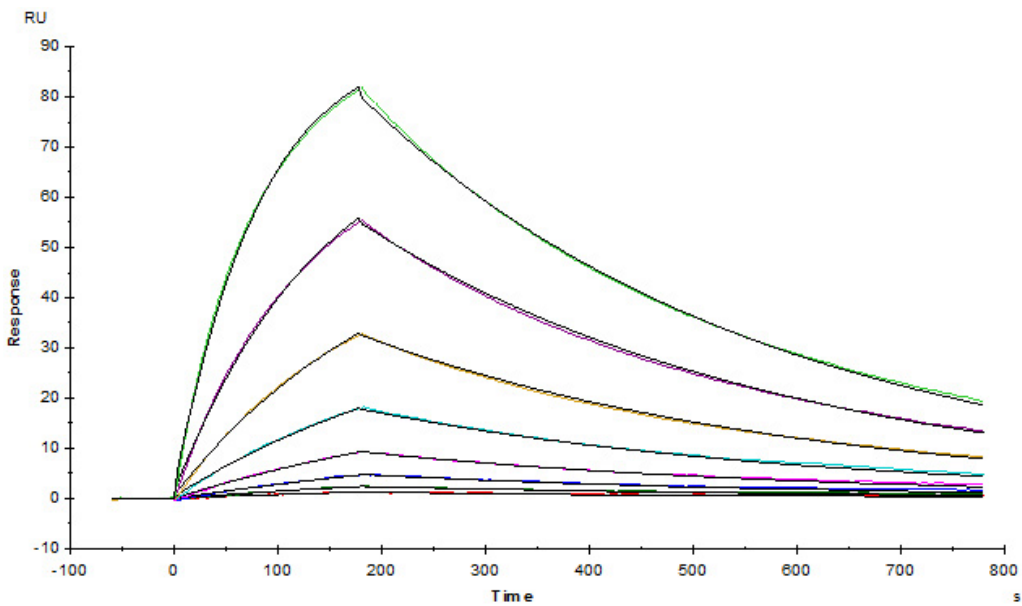
Discounts, Gifts,
and more!





Immobilized Human TIM-3, His Tag (Cat. No. TM3-H5229) at 0.2 µg/mL (100 µL/well) can bind Anti-TIM3 MAb, Human IgG4 with a linear range of 0.2-6 ng/mL (QC tested).

Bioactivity-SPR



Anti-Human TIM-3 MAb (human IgG4) captured on CM5 chip via Anti-Human IgG Fc antibodies surface, can bind Human TIM-3, His Tag (Cat. No. TM3-H5229) with an affinity constant of 9.7 nM as determined in a SPR assay (Biacore T200) (Routinely tested).

Background

Hepatitis A virus cellular receptor 2 is also known as HAVCR2, FLJ14428, KIM3, TIM3, TIMD3, is a member of the TIM family of immune regulating molecules with one Ig-like V-type domain and a Ser/Thr-rich mucin stalk. CD4-positive T helper lymphocytes can be divided into types 1 (Th1) and 2 (Th2) on the basis of their cytokine secretion patterns. Th1 cells and their associated cytokines are involved in cell-mediated immunity to intracellular pathogens and delayed-type hypersensitivity reactions, whereas Th2 cells are involved in the control of extracellular helminthic infections and the promotion of atopic and allergic diseases. The 2 types of cells also cross-regulate the functions of the other. HAVCR2 is a Th1-specific cell surface protein that regulates macrophage activation and enhances the severity of experimental autoimmune encephalomyelitis in mice. HAVCR2 regulates macrophage activation. Inhibits T-helper type 1 lymphocyte (Th1)-mediated auto- and alloimmune responses and promotes immunological tolerance. May be also involved in T-cell homing. Dysregulation of the HAVCR2-galectin-9 pathway could underlie chronic autoimmune disease states in human, such as multiple sclerosis.

