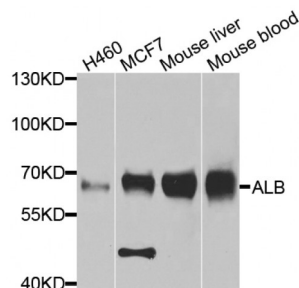


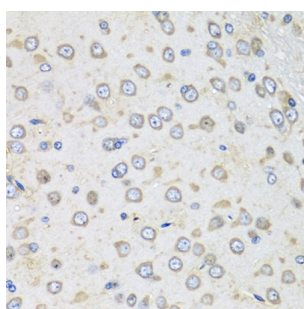
Abbexa Ltd, Innovation Centre, Cambridge Science Park, Cambridge, CB4 0EY, UK
Telephone: +44 (0) 1223 755950 - Fax: +44 (0) 1223 755951 - E-Mail: info@abbexa.com

Albumin (ALB) Antibody

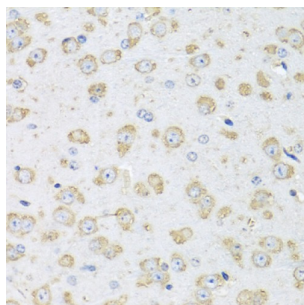
Catalogue No.: abx000044



Western blot analysis of extracts of various cell lines, using ALB antibody (abx000044) at 1/1000 dilution.



Immunohistochemistry of paraffin-embedded rat brain using ALB antibody (abx000044) at dilution of 1/100 (40x lens).



Immunohistochemistry of paraffin-embedded mouse brain using ALB antibody (abx000044) at dilution of 1/100 (40x lens).

ALB Antibody is a Mouse Monoclonal antibody against ALB. Albumin is a soluble, monomeric protein which comprises about one-half of the blood serum protein. Albumin functions primarily as a carrier protein for steroids, fatty acids, and thyroid hormones and plays a role in stabilizing extracellular fluid volume. Albumin is a globular unglycosylated serum protein of molecular weight 65,000. Albumin is synthesized in the liver as preproalbumin which has an N-terminal peptide that is removed before the nascent protein is released from the rough endoplasmic reticulum. The product, proalbumin, is in turn cleaved in the Golgi vesicles to produce the secreted albumin.

Target:	ALB
Reactivity:	Human, Mouse, Rat
Host:	Mouse
Clonality:	Monoclonal
Tested Applications:	WB, IHC

Abbexa Ltd, Innovation Centre, Cambridge Science Park, Cambridge, CB4 0EY, UK
Telephone: +44 (0) 1223 755950 - Fax: +44 (0) 1223 755951 - E-Mail: info@abbexa.com

Recommended dilutions: WB: 1/200 - 1/500, IHC: 1/50 - 1/100. Optimal dilutions/concentrations should be determined by the end user.

Immunogen: Recombinant fusion protein of human ALB.

Purification: Affinity purified.

Form: Liquid

Isotype: IgG

Conjugation: Unconjugated

Storage: Aliquot and store at -20 °C. Avoid repeated freeze/thaw cycles.

Molecular Weight: Calculated MW: 45 kDa/47 kDa/69 kDa
Observed MW: 65 kDa

Swiss Prot: [P02768](#)

GeneID: [213](#)

Gene Symbol: ALB

Concentration: > 1 mg/ml

Buffer: PBS, pH 7.3, 0.02% sodium azide, 50% glycerol.

Note: This product is for research use only.