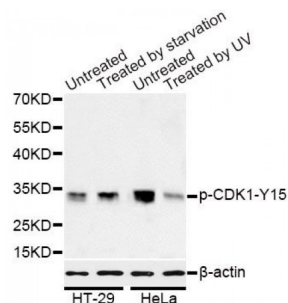


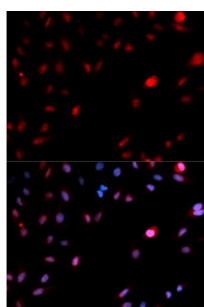
Abbexa Ltd, Innovation Centre, Cambridge Science Park, Cambridge, CB4 0EY, UK  
Telephone: +44 (0) 1223 755950 - Fax: +44 (0) 1223 755951 - E-Mail: [info@abbexa.com](mailto:info@abbexa.com)

## CDK1 (pY15) Antibody

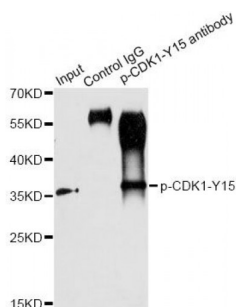
Catalogue No.: abx000105



Western blot analysis of extracts of HT-29 and HeLa cells, using Phospho-CDK1-Y15 antibody (abx000105) at 1/1000 dilution. HT-29 cells were treated by serum-starvation overnight. HeLa cells were treated by UV for 15-30 minutes.



Immunofluorescence analysis of MCF-7 cells using Phospho-CDK1-Y15 antibody (abx000105). Blue: DAPI for nuclear staining.



Immunoprecipitation analysis of 200 µg extracts of HT-29 cells treated by starvation using 2.5 µg Phospho-CDK1-Y15 antibody (abx000105). Western blot was performed from the immunoprecipitate using Phospho-CDK1-Y15 antibody (abx000105) at a dilution of 1/1000.

CDK1 (pY15) Antibody is a Rabbit Polyclonal antibody against CDK1 (pY15). The protein encoded by this gene is a member of the Ser/Thr protein kinase family. This protein is a catalytic subunit of the highly conserved protein kinase complex known as M-phase promoting factor (MPF), which is essential for G1/S and G2/M phase transitions of eukaryotic cell cycle. Mitotic cyclins stably associate with this protein and function as regulatory subunits. The kinase activity of this protein is controlled by cyclin accumulation and destruction through the cell cycle. The phosphorylation and dephosphorylation of this protein also play important regulatory roles in cell cycle control. Alternatively spliced transcript variants encoding different isoforms have been found for this gene.

**Target:** CDK1 (pY15)

**Reactivity:** Human, Mouse, Rat

**Host:** Rabbit

**Clonality:** Polyclonal

Abbexa Ltd, Innovation Centre, Cambridge Science Park, Cambridge, CB4 0EY, UK  
Telephone: +44 (0) 1223 755950 - Fax: +44 (0) 1223 755951 - E-Mail: [info@abbexa.com](mailto:info@abbexa.com)

**Tested Applications:** WB, IF/ICC, IP

**Recommended dilutions:** WB: 1/500 - 1/1000, IF/ICC: 1/50 - 1/100, IP: 1/50 - 1/100. Optimal dilutions/concentrations should be determined by the end user.

**Immunogen:** Synthetic Peptide. A phospho specific peptide corresponding to residues surrounding Y15 of human CDK1.

**Purification:** Affinity purified.

**Form:** Liquid

**Isotype:** IgG

**Conjugation:** Unconjugated

**Storage:** Aliquot and store at -20 °C. Avoid repeated freeze/thaw cycles.

**Molecular Weight:** Calculated MW: 27 kDa/34 kDa  
Observed MW: 34 kDa

**Swiss Prot:** [P06493](#)

**GeneID:** [983](#)

**Gene Symbol:** CDK1

**Concentration:** > 1 mg/ml

**Buffer:** PBS, pH 7.3, 0.02% sodium azide, 50% glycerol.

**Note:** This product is for research use only.