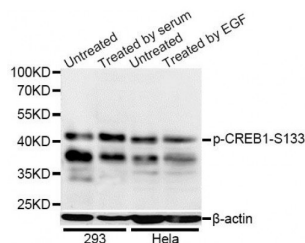


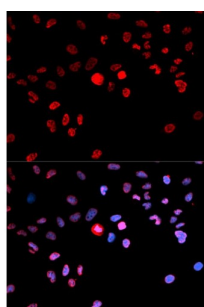
Abbexa Ltd, Innovation Centre, Cambridge Science Park, Cambridge, CB4 0EY, UK  
Telephone: +44 (0) 1223 755950 - Fax: +44 (0) 1223 755951 - E-Mail: info@abbexa.com

## CREB (pS133) Antibody

Catalogue No.: abx000108



Western blot analysis of extracts of 293 and HeLa cells, using Phospho-CREB1-S133 antibody (abx000108) at 1/1000 dilution. 293 cells were treated by 10% FBS for 30 minutes after serum-starvation overnight. HeLa cells were treated by EGF (100ng/ml) for 30 minutes after serum-starvation overnight.



Immunofluorescence analysis of MCF-7 cells using Phospho-CREB1-S133 antibody (abx000108). Blue: DAPI for nuclear staining.

CREB (pS133) Antibody is a Rabbit Polyclonal antibody against CREB (pS133). This gene encodes a transcription factor that is a member of the leucine zipper family of DNA binding proteins. This protein binds as a homodimer to the cAMP-responsive element, an octameric palindrome. The protein is phosphorylated by several protein kinases, and induces transcription of genes in response to hormonal stimulation of the cAMP pathway. Alternate splicing of this gene results in two transcript variants encoding different isoforms.

**Target:** CREB (pS133)

**Reactivity:** Human

**Host:** Rabbit

**Clonality:** Polyclonal

**Tested Applications:** WB, IF/ICC

**Recommended dilutions:** WB: 1/200 - 1/2000, IF/ICC: 1/50 - 1/100. Optimal dilutions/concentrations should be determined by the end user.

**Immunogen:** Synthetic Peptide. A phospho specific peptide corresponding to residues surrounding Ser133 of human CREB.

**Purification:** Affinity purified.

**Form:** Liquid

Abbexa Ltd, Innovation Centre, Cambridge Science Park, Cambridge, CB4 0EY, UK  
Telephone: +44 (0) 1223 755950 - Fax: +44 (0) 1223 755951 - E-Mail: [info@abbexa.com](mailto:info@abbexa.com)

<b>Isotype:</b>	IgG
<b>Conjugation:</b>	Unconjugated
<b>Storage:</b>	Aliquot and store at -20 °C. Avoid repeated freeze/thaw cycles.
<b>Molecular Weight:</b>	Calculated MW: 25 kDa/35 kDa/36 kDa Observed MW: 42 kDa
<b>Swiss Prot:</b>	<a href="#">P16220</a>
<b>GeneID:</b>	<a href="#">1385</a>
<b>Gene Symbol:</b>	CREB1
<b>Concentration:</b>	> 1 mg/ml
<b>Buffer:</b>	PBS, pH 7.3, 0.02% sodium azide, 50% glycerol.
<b>Note:</b>	This product is for research use only.