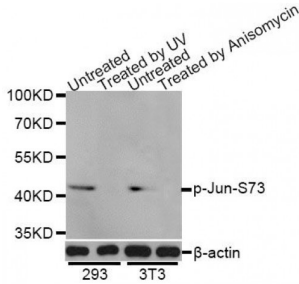
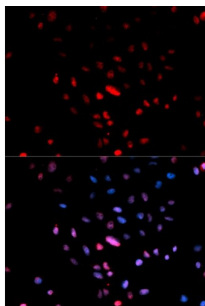


c-Jun (pS73) Antibody

Catalogue No.: abx000132



Western blot analysis of extracts of 293 and NIH/3T3 cells, using Phospho-Jun-S73 antibody (abx000132) at 1/1000 dilution. 293 cells were treated by UV for 15-30 minutes. NIH/3T3 cells were treated by Anisomycin (25 µg/ml) for 30 minutes.



Immunofluorescence analysis of U2OS cells using Phospho-Jun-S73 antibody (abx000132). Blue: DAPI for nuclear staining.

c-Jun (pS73) Antibody is a Rabbit Polyclonal antibody against c-Jun (pS73). c-Jun is a member of the Jun Family containing c-Jun, JunB and JunD, and is a component of the transcription factor AP-1 (activator protein-1). AP-1 is composed of dimers of Fos, Jun and ATF family members and binds to and activates transcription at TRE/AP-1 elements (reviewed in 1). Extracellular signals including growth factors, chemokines and stress activate AP-1-dependent transcription. The transcriptional activity of c-Jun is regulated by phosphorylation at Ser63 and Ser73 through SAPK/JNK (reviewed in 2). Knock-out studies in mice have shown that c-Jun is essential for embryogenesis (3), and subsequent studies have demonstrated roles for c-Jun in various tissues and developmental processes including axon regeneration (4), liver regeneration (5) and T cell development (6). AP-1 regulated genes exert diverse biological functions including cell proliferation, differentiation, and apoptosis, as well as transformation, invasion and metastasis, depending on cell type and context (7-9). Other target genes regulate survival as well as hypoxia and angiogenesis (8,10). c-Jun has emerged as a promising therapeutic target for cancer, vascular remodeling, acute inflammation, as well as rheumatoid arthritis (11,12).

Target: c-Jun (pS73)

Reactivity: Human, Mouse

Host: Rabbit

Clonality: Polyclonal

Tested Applications: WB, IF/ICC

Recommended dilutions: WB: 1/500 - 1/2000, IF/ICC: 1/20 - 1/50. Optimal dilutions/concentrations should be determined by the end user.

Abbexa Ltd, Innovation Centre, Cambridge Science Park, Cambridge, CB4 0EY, UK
Telephone: +44 (0) 1223 755950 - Fax: +44 (0) 1223 755951 - E-Mail: info@abbexa.com

Immunogen:	Synthetic Peptide. A phospho specific peptide corresponding to residues surrounding Ser73 of human c-Jun.
Purification:	Affinity purified.
Form:	Liquid
Isotype:	IgG
Conjugation:	Unconjugated
Storage:	Aliquot and store at -20 °C. Avoid repeated freeze/thaw cycles.
Molecular Weight:	Calculated MW: 35 kDa Observed MW: 44 kDa
Swiss Prot:	P05412
GeneID:	3725
Gene Symbol:	JUN
Concentration:	> 1 mg/ml
Buffer:	PBS, pH 7.3, 0.02% sodium azide, 50% glycerol.
Note:	This product is for research use only.