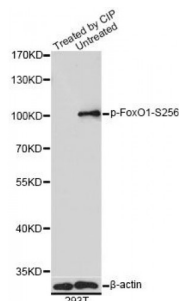


Abbexa Ltd, Innovation Centre, Cambridge Science Park, Cambridge, CB4 0EY, UK
Telephone: +44 (0) 1223 755950 - Fax: +44 (0) 1223 755951 - E-Mail: info@abbexa.com

FOXO1 (pS256) Antibody

Catalogue No.: abx000224



Western blot analysis of extracts of 293T cells, using Phospho-FoxO1-S256 antibody (abx000224) at 1/1000 dilution. 293T cell lysates were treated by CIP at 37°C for 1 hour.

FOXO1 (pS256) Antibody is a Rabbit Polyclonal antibody against FOXO1 (pS256). This gene belongs to the forkhead family of transcription factors which are characterized by a distinct forkhead domain. The specific function of this gene has not yet been determined; however, it may play a role in myogenic growth and differentiation. Translocation of this gene with PAX3 has been associated with alveolar rhabdomyosarcoma.

Target: FOXO1 (pS256)

Reactivity: Human

Host: Rabbit

Clonality: Polyclonal

Tested Applications: WB

Recommended dilutions: WB: 1/500 - 1/1000. Optimal dilutions/concentrations should be determined by the end user.

Immunogen: Synthetic Peptide. A phospho specific peptide corresponding to residues surrounding S256 of human FOXO1.

Purification: Affinity purified.

Form: Liquid

Isotype: IgG

Conjugation: Unconjugated

Storage: Aliquot and store at -20 °C. Avoid repeated freeze/thaw cycles.

Molecular Weight: Calculated MW: 69 kDa
Observed MW: 100 kDa

Swiss Prot: [Q12778](#)

GeneID: [2308](#)

Gene Symbol: FOXO1

Concentration: > 1 mg/ml

Buffer: PBS, pH 7.3, 0.02% sodium azide, 50% glycerol.

Note: This product is for research use only.