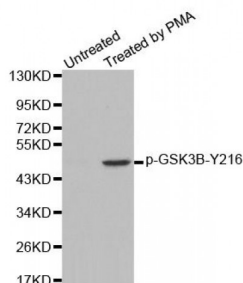


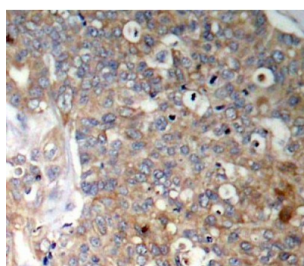
Abbexa Ltd, Innovation Centre, Cambridge Science Park, Cambridge, CB4 0EY, UK
Telephone: +44 (0) 1223 755950 - Fax: +44 (0) 1223 755951 - E-Mail: info@abbexa.com

GSK3B (pY216) Antibody

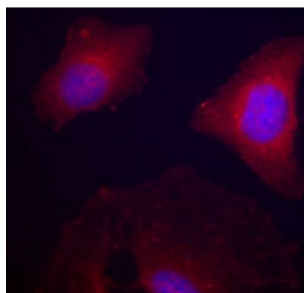
Catalogue No.: abx000312



Western blot analysis of extracts from 293 cells using Phospho-GSK3B-Y216 antibody (abx000312).



Immunohistochemistry of paraffin-embedded human breast carcinoma using Phospho-GSK3B-Y216 antibody (abx000312).



Immunofluorescence staining of methanol-fixed HeLa cells using Phospho-GSK3B-Y216 antibody (abx000312).

GSK3B (pY216) Antibody is a Rabbit Polyclonal antibody against GSK3B (pY216). The protein encoded by this gene is a serine-threonine kinase, belonging to the glycogen synthase kinase subfamily. It is involved in energy metabolism, neuronal cell development, and body pattern formation. Polymorphisms in this gene have been implicated in modifying risk of Parkinson disease, and studies in mice show that overexpression of this gene may be relevant to the pathogenesis of Alzheimer disease. Alternatively spliced transcript variants encoding different isoforms have been found for this gene.

Target:	GSK3B (pY216)
Reactivity:	Human, Mouse, Rat
Host:	Rabbit
Clonality:	Polyclonal
Tested Applications:	WB, IHC, IF/ICC

Abbexa Ltd, Innovation Centre, Cambridge Science Park, Cambridge, CB4 0EY, UK
Telephone: +44 (0) 1223 755950 - Fax: +44 (0) 1223 755951 - E-Mail: info@abbexa.com

Recommended dilutions: WB: 1/500 - 1/2000, IHC: 1/50 - 1/100, IF/ICC: 1/100 - 1/200. Optimal dilutions/concentrations should be determined by the end user.

Immunogen: Synthetic Peptide. A phospho specific peptide corresponding to residues surrounding Y216 of human GSK3B.

Purification: Affinity purified.

Form: Liquid

Isotype: IgG

Conjugation: Unconjugated

Storage: Aliquot and store at -20 °C. Avoid repeated freeze/thaw cycles.

Molecular Weight: Calculated MW: 46 kDa/48 kDa
Observed MW: 47 kDa

Swiss Prot: [P49841](#)

GeneID: [2932](#)

Gene Symbol: GSK3B

Concentration: > 1 mg/ml

Buffer: PBS, pH 7.3, 0.02% sodium azide, 50% glycerol.

Note: This product is for research use only.