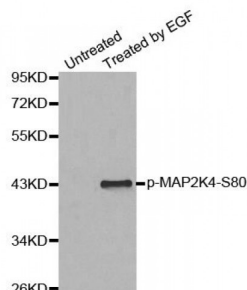


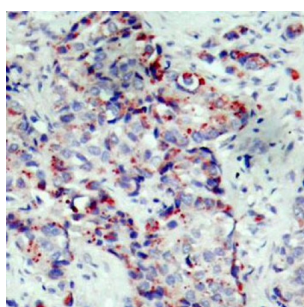
Abbexa Ltd, Innovation Centre, Cambridge Science Park, Cambridge, CB4 0EY, UK
Telephone: +44 (0) 1223 755950 - Fax: +44 (0) 1223 755951 - E-Mail: info@abbexa.com

MAP2K4 (pS80) Antibody

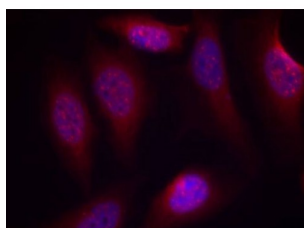
Catalogue No.: abx000437



Western blot analysis of extracts from HepG2 cells, using Phospho-MAP2K4-S80 antibody (abx000437).



Immunohistochemistry of paraffin-embedded human breast carcinoma using Phospho-MAP2K4-S80 antibody (abx000437).



Immunofluorescence staining of methanol-fixed HeLa cells using Phospho-MAP2K4-S80 antibody (abx000437).

MAP2K4 (pS80) Antibody is a Rabbit Polyclonal antibody against MAP2K4 (pS80). This gene encodes a member of the mitogen-activated protein kinase (MAPK) family. Members of this family act as an integration point for multiple biochemical signals and are involved in a wide variety of cellular processes such as proliferation, differentiation, transcription regulation, and development. They form a Tee-tiered signaling module composed of MAPKKKs, MAPKKs, and MAPKs. This protein is phosphorylated at serine and Teonine residues by MAPKKKs and subsequently phosphorylates downstream MAPK targets at Teonine and tyrosine residues. A similar protein in mouse has been reported to play a role in liver organogenesis. A pseudogene of this gene is located on the long arm of chromosome X. Alternative splicing results in multiple transcript variants.

Target:	MAP2K4 (pS80)
Reactivity:	Human, Mouse, Rat
Host:	Rabbit
Clonality:	Polyclonal

Abbexa Ltd, Innovation Centre, Cambridge Science Park, Cambridge, CB4 0EY, UK
Telephone: +44 (0) 1223 755950 - Fax: +44 (0) 1223 755951 - E-Mail: info@abbexa.com

Tested Applications: WB, IHC, IF/ICC

Recommended dilutions: WB: 1/500 - 1/2000, IHC: 1/50 - 1/100, IF/ICC: 1/100 - 1/200. Optimal dilutions/concentrations should be determined by the end user.

Immunogen: Synthetic Peptide. A phospho specific peptide corresponding to residues surrounding S80 of human MAP2K4.

Purification: Affinity purified.

Form: Liquid

Isotype: IgG

Conjugation: Unconjugated

Storage: Aliquot and store at -20 °C. Avoid repeated freeze/thaw cycles.

Molecular Weight: Calculated MW: 44 kDa/45 kDa
Observed MW: 44 kDa

Swiss Prot: [P45985](#)

GeneID: [6416](#)

Gene Symbol: MAP2K4

Concentration: > 1 mg/ml

Buffer: PBS, pH 7.3, 0.02% sodium azide, 50% glycerol.

Note: This product is for research use only.