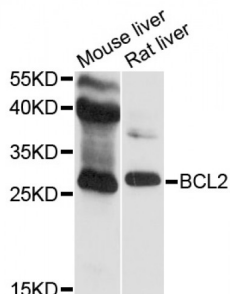


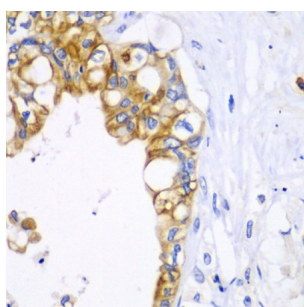
Abbexa Ltd, Innovation Centre, Cambridge Science Park, Cambridge, CB4 0EY, UK
Telephone: +44 (0) 1223 755950 - Fax: +44 (0) 1223 755951 - E-Mail: info@abbexa.com

B-Cell Leukemia/Lymphoma 2 (BCL2) Antibody

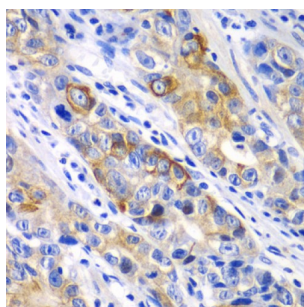
Catalogue No.: abx000596



Western blot analysis of extracts of various cell lines, using BCL2 antibody (abx000596) at 1/500 dilution.



Immunohistochemistry of paraffin-embedded human liver cancer using BCL2 antibody (abx000596) at dilution of 1/100 (40x lens).



Immunohistochemistry of paraffin-embedded human gastric cancer using BCL2 antibody (abx000596) at dilution of 1/100 (40x lens).

BCL2 Antibody is a Rabbit Polyclonal antibody against BCL2. This gene encodes an integral outer mitochondrial membrane protein that blocks the apoptotic death of some cells such as lymphocytes. Constitutive expression of BCL2, such as in the case of translocation of BCL2 to Ig heavy chain locus, is thought to be the cause of follicular lymphoma. Two transcript variants, produced by alternate splicing, differ in their C-terminal ends.

Target:	BCL2
Reactivity:	Human, Mouse, Rat
Host:	Rabbit
Clonality:	Polyclonal
Tested Applications:	WB, IHC

Abbexa Ltd, Innovation Centre, Cambridge Science Park, Cambridge, CB4 0EY, UK
Telephone: +44 (0) 1223 755950 - Fax: +44 (0) 1223 755951 - E-Mail: info@abbexa.com

Recommended dilutions: WB: 1/500 - 1/2000, IHC: 1/50 - 1/100. Optimal dilutions/concentrations should be determined by the end user.

Immunogen: Recombinant protein of human BCL2.

Purification: Affinity purified.

Form: Liquid

Isotype: IgG

Conjugation: Unconjugated

Storage: Aliquot and store at -20 °C. Avoid repeated freeze/thaw cycles.

Molecular Weight: Calculated MW: 22 kDa/26 kDa
Observed MW: 26 kDa

Swiss Prot: [P10415](#)

GeneID: [596](#)

Gene Symbol: BCL2

Concentration: > 1 mg/ml

Buffer: PBS, pH 7.3, 0.02% sodium azide, 50% glycerol.

Note: This product is for research use only.