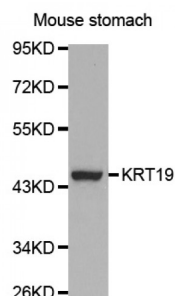


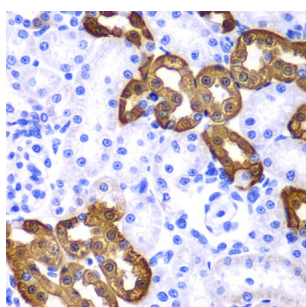
Abbexa Ltd, Innovation Centre, Cambridge Science Park, Cambridge, CB4 0EY, UK
Telephone: +44 (0) 1223 755950 - Fax: +44 (0) 1223 755951 - E-Mail: info@abbexa.com

Keratin 19 (KRT19) Antibody

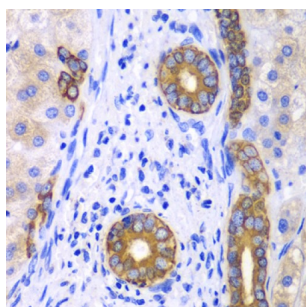
Catalogue No.: abx000632



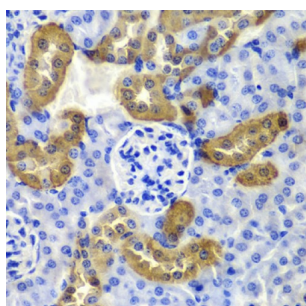
Western blot analysis of extracts of mouse stomach, using KRT19 antibody (abx000632) at 1/1000 dilution.



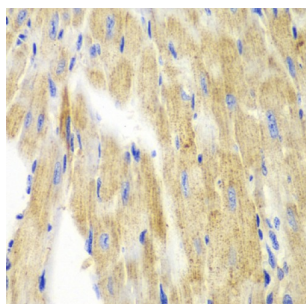
Immunohistochemistry of paraffin-embedded rat kidney using KRT19 antibody (abx000632) at dilution of 1/100 (40x lens).



Immunohistochemistry of paraffin-embedded human liver cancer using KRT19 antibody (abx000632) at dilution of 1/100 (40x lens).



Immunohistochemistry of paraffin-embedded mouse kidney using KRT19 antibody (abx000632) at dilution of 1/100 (40x lens).



Immunohistochemistry of paraffin-embedded mouse heart using KRT19 antibody (abx000632) at dilution of 1/100 (40x lens).

KRT19 Antibody is a Rabbit Polyclonal antibody against KRT19. The protein encoded by this gene is a member of the keratin

Abbexa Ltd, Innovation Centre, Cambridge Science Park, Cambridge, CB4 0EY, UK
Telephone: +44 (0) 1223 755950 - Fax: +44 (0) 1223 755951 - E-Mail: info@abbexa.com

family. The keratins are intermediate filament proteins responsible for the structural integrity of epithelial cells and are subdivided into cytokeratins and hair keratins. The type I cytokeratins consist of acidic proteins which are arranged in pairs of heterotypic keratin chains. Unlike its related family members, this smallest known acidic cytokeratin is not paired with a basic cytokeratin in epithelial cells. It is specifically expressed in the periderm, the transiently superficial layer that envelopes the developing epidermis. The type I cytokeratins are clustered in a region of chromosome 17q12-q21.

Target: KRT19

Reactivity: Human, Mouse, Rat

Host: Rabbit

Clonality: Polyclonal

Tested Applications: WB, IHC

Recommended dilutions: WB: 1/500 - 1/2000, IHC: 1/50 - 1/200. Optimal dilutions/concentrations should be determined by the end user.

Immunogen: Recombinant protein of human KRT19.

Purification: Affinity purified.

Form: Liquid

Isotype: IgG

Conjugation: Unconjugated

Storage: Aliquot and store at -20 °C. Avoid repeated freeze/thaw cycles.

Molecular Weight: Calculated MW: 44 kDa
Observed MW: 46 kDa

Swiss Prot: [P08727](#)

GeneID: [3880](#)

Gene Symbol: KRT19

Concentration: > 1 mg/ml

Buffer: PBS, pH 7.3, 0.02% sodium azide, 50% glycerol.

Note: This product is for research use only.